



Emperor Way, Peterborough  
**£300,000** Freehold

**Sharman  
Quinney**



# Key Features



- Three Storey Family Home
- Three Bedrooms
- En-Suite Shower Room
- Lounge/Diner
- Downstairs Cloakroom

Spacious Modern Three Storey Family Home which is set back in a corner and from the main road, briefly comprises of Main Entrance Hall with access to, Two Piece Downstairs Stairs Cloakroom, Fitted Kitchen with fitted base and eye level units, worktop space, single drainer sink unit, built-in four ring gas hob, electric oven, space for fridge/freezer, plumbing for washing machine and dishwasher, Lounge/Diner had a under stairs storage cupboard, French doors opening out onto the rear garden. First Floor Landing with doors to the Two Bedrooms, Three Piece Family Bathroom and stairs to, Second Floor Landing with built-in airing cupboard and door to, Master Bedroom with a door to the Three Piece En-suite Shower Room. Outside frontage open plan, driveway providing off road parking and leads to the single garage with a metal up and over door, light and power



connected, rear garden is enclosed laid mainly to lawn with a paved patio seating area.

Entrance Hall - 12'7"max x 3'2"max (excluding stairs)

Downstairs Cloakroom- 4'8" x 2'8"

Fitted Kitchen- 11'3" x 5'8"

Lounge/Diner- 12'6"max x 11'6"max (excluding bay)

First Floor Landing- 10' x 6'4"

Bedroom 2 - 12'6" 8'9"

Bedroom 3 - 9'3"max x 8'1"max (L/shaped room, excluding wardrobe)

Family Bathroom- 6'4"max x 5'1"max (including bath)

Second Floor Landing

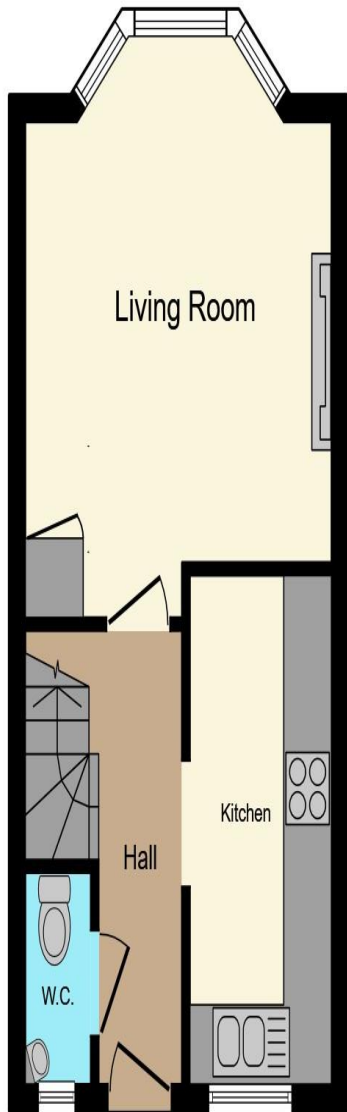
Master Bedroom- 10'7"max x 9'4"max (excluding dormer window & door recess)

En-Suite Shower Room- 6'5" x 5'4"

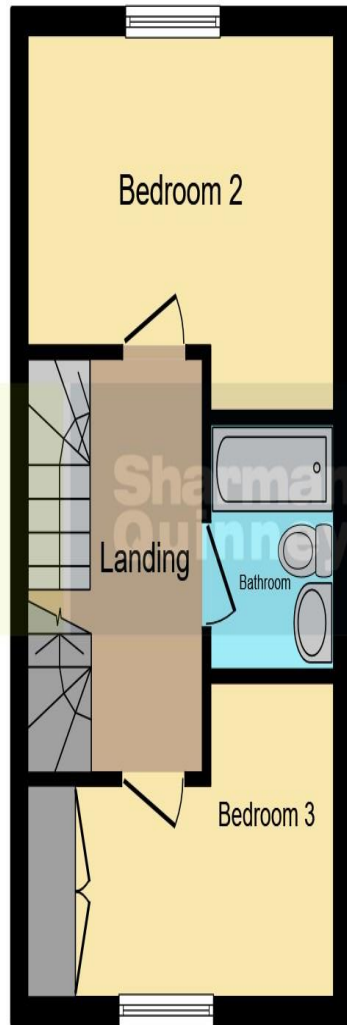
Single Garage- 18' max x 8'6" max



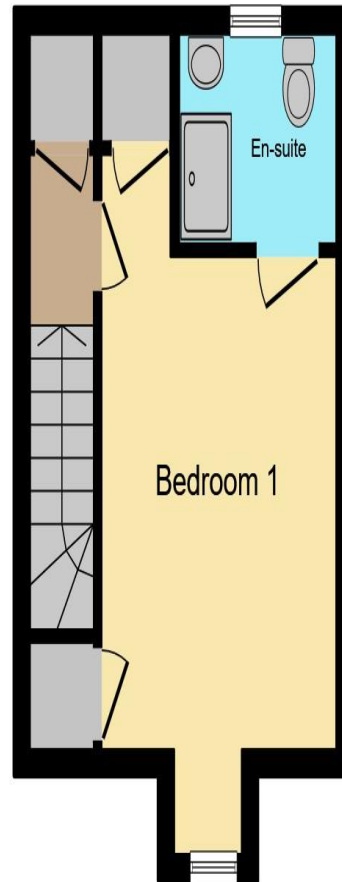




**Ground Floor**



**First Floor**



**Second Floor**


This floor plan is for illustrative purposes only. It is not drawn to scale. Any measurements, floor areas (including any total floor area), openings and orientation are approximate. No details are guaranteed, they cannot be relied upon for any purpose and they do not form part of any agreement. No liability is taken for any error, omission or misstatement. A party must rely upon its own inspection(s). Powered by [www.focalagent.com](http://www.focalagent.com)

To view this property call Sharman Quinney on:  
**01733 896222**

# Selling your property?

Contact us to arrange a **FREE** home valuation.

 01733 896222

 13 Desborough Avenue, Stanground,  
PETERBOROUGH, Cambridgeshire, PE2 8RG

 [stanground@sharmanquinney.co.uk](mailto:stanground@sharmanquinney.co.uk)

 [www.sharmanquinney.co.uk](http://www.sharmanquinney.co.uk)



 SCAN ME



Sharman Quinney Holdings Limited is registered in England and Wales under company number 4174227, Registered Office is Cumbria House, 16-20 Hockliffe Street, Leighton Buzzard, Bedfordshire, LU7 1GN. VAT Registration Number is 500 2481 05.

1: These particulars do not constitute part or all of an offer or contract. 2: The measurements indicated are supplied for guidance only and as such must be considered incorrect. 3: Potential buyers are advised to recheck the measurements before committing to any expense. 4: Sharman Quinney has not tested any apparatus, equipment, fixtures, fittings or services and it is the buyers interests to check the working condition of any appliances. 5: Sharman Quinney has not sought to verify the legal title of the property and buyers must obtain verification from their legal representative. 6: Intending purchasers will be asked to produce identification documentation at a later stage and we would ask your co-operation in order that there will be no delay in agreeing the sale. Ref: SSQ204461 - 0001

