



Houghton Avenue, Peterborough
Fixed Price £355,000 Freehold

**Sharman
Quinney**

Key Features



- Detached Family Home
- Four Bedrooms
- En-Suite Shower Room
- Two Reception Rooms
- Kitchen/Breakfast Room

Good Sized Detached Family Home which benefits from being in a Cul-De-Sac, set back from the main road and in brief the accommodation comprises of, Entrance Hall with stairs to the first floor and doors to, the Separate Lounge and Dining Room, Fitted Kitchen/Breakfast Room which has a range of fitted base and eye level units, worktop space, stainless steel sink unit, matching breakfast bar with stools, built-in gas hob, electric oven, space for fridge/freezer, plumbing for dishwasher, part glazed door giving access into the rear garden and a door to, Utility Room which has a fitted worktop and a stainless steel sink unit, plumbing for washing machine and space for a tumble dryer. Upstairs the First Floor Landing has doors to, the Master Bedroom with the En-Suite Shower Room, the three further Bedrooms and to the fitted Three Piece Family Bathroom. Outside



front garden open plan, driveway providing off road parking and leads to the Double Garage with light and power connected, gated access to the enclosed rear garden which laid mainly to lawn with a paved patio seating area.

Entrance Hall - 8'9"max x 6'9"max (excluding stairs)

Downstairs Cloakroom - 5'1" x 3'2"

Lounge - 15'2"max x 11'1"max (irregular shaped room)

Dining Room - 11'1" x 8'7"

Kitchen/Breakfast Room - 11'7" x 11'6"

Utility Room - 6'6" x 4'8"

First Floor Landing - 12'8" x 3'

Master Bedroom - 12' max x 9'9" max (including wardrobe)

En-Suite Shower Room - 6'6" max x 4'9" max (including shower cubicle)

Bedroom 2 - 9'7" x 7'8" (excluding door recess & built-in wardrobe)

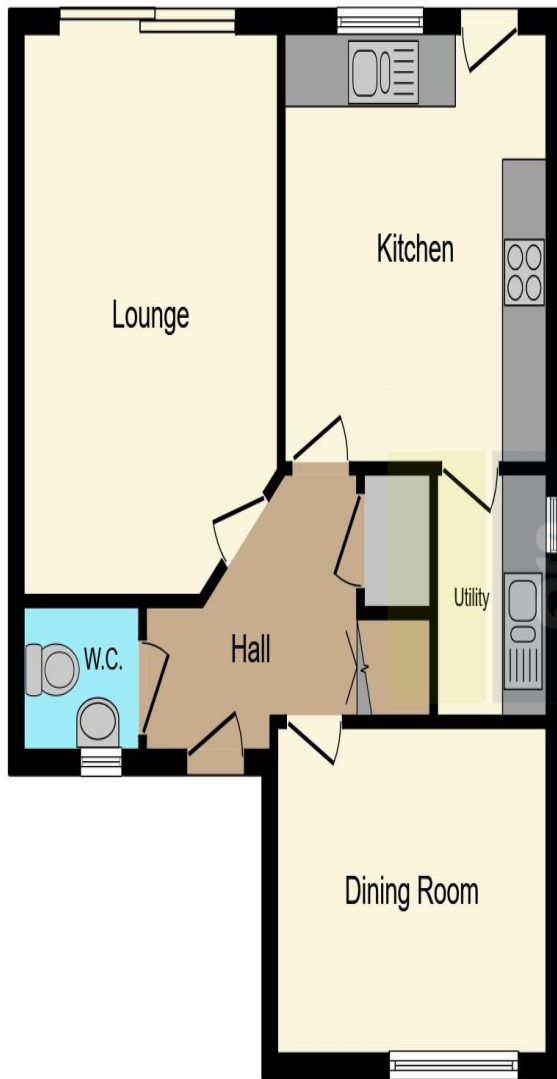
Bedroom 3 - 11'2" max x 9'1" max (including wardrobe)

Bedroom 4 - 8'8" x 6'6" (excluding door recess)

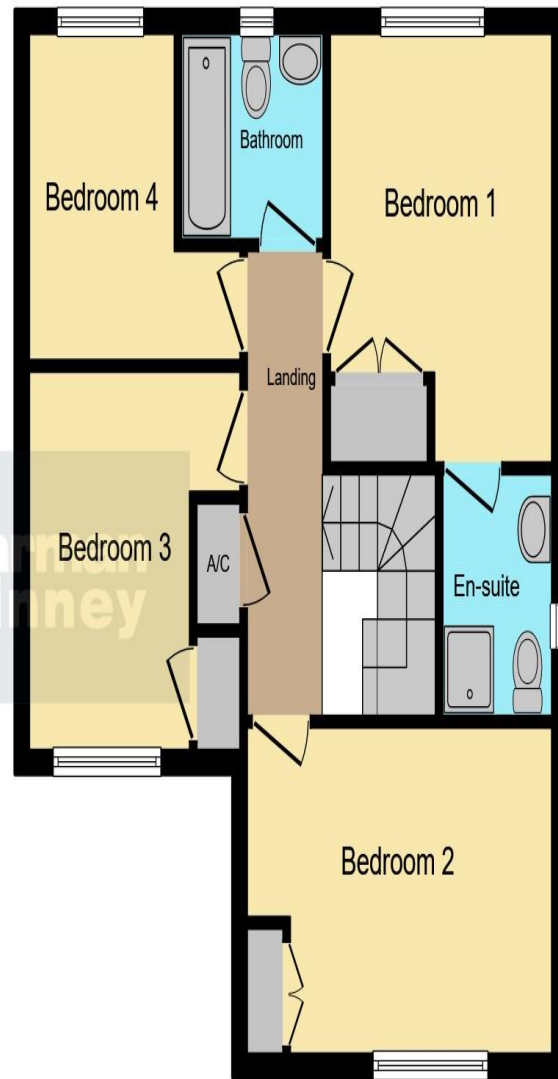
Family Bathroom - 6'3" max x 5'5" max (including three piece suite)

Double Garage - 17'2" max x 16'6" max





Ground Floor



First Floor


This floor plan is for illustrative purposes only. It is not drawn to scale. Any measurements, floor areas (including any total floor area), openings and orientation are approximate. No details are guaranteed, they cannot be relied upon for any purpose and they do not form part of any agreement. No liability is taken for any error, omission or misstatement. A party must rely upon its own inspection(s). Powered by www.focalagent.com

To view this property call Sharman Quinney on:
01733 896222

Selling your property?

Contact us to arrange a **FREE** home valuation.

 01733 896222

 13 Desborough Avenue, Stanground,
PETERBOROUGH, Cambridgeshire, PE2 8RG

 stanground@sharmanquinney.co.uk

 www.sharmanquinney.co.uk



 SCAN ME



Sharman Quinney Holdings Limited is registered in England and Wales under company number 4174227, Registered Office is Cumbria House, 16-20 Hockliffe Street, Leighton Buzzard, Bedfordshire, LU7 1GN. VAT Registration Number is 500 2481 05.

1: These particulars do not constitute part or all of an offer or contract. 2: The measurements indicated are supplied for guidance only and as such must be considered incorrect. 3: Potential buyers are advised to recheck the measurements before committing to any expense. 4: Sharman Quinney has not tested any apparatus, equipment, fixtures, fittings or services and it is the buyers interests to check the working condition of any appliances. 5: Sharman Quinney has not sought to verify the legal title of the property and buyers must obtain verification from their legal representative. 6: Intending purchasers will be asked to produce identification documentation at a later stage and we would ask your co-operation in order that there will be no delay in agreeing the sale. Ref: SSQ204408 - 0004

