



parkinsonfarr
estate agents

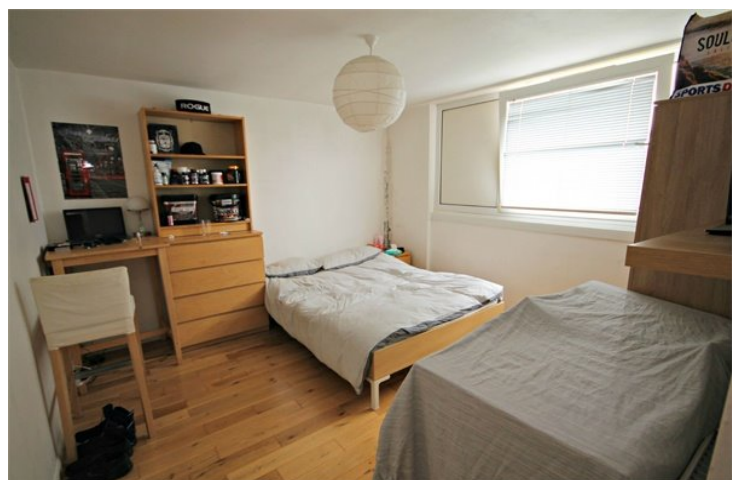


Oman Avenue, Cricklewood, , NW2 6BD

£403 pw + security deposit

An immaculate property overlooking Gladstone Park close to the extensive amenities of Willesden Green and Dollis Hill. The property features a Large reception room with French windows leading out to a private balcony, a separate kitchen/diner, two double bedrooms, and off street parking.

Recently re-furnished and available on the 14th February, suit sharers, two couples maximum.
FIRST TO SEE WILL TAKE !!!



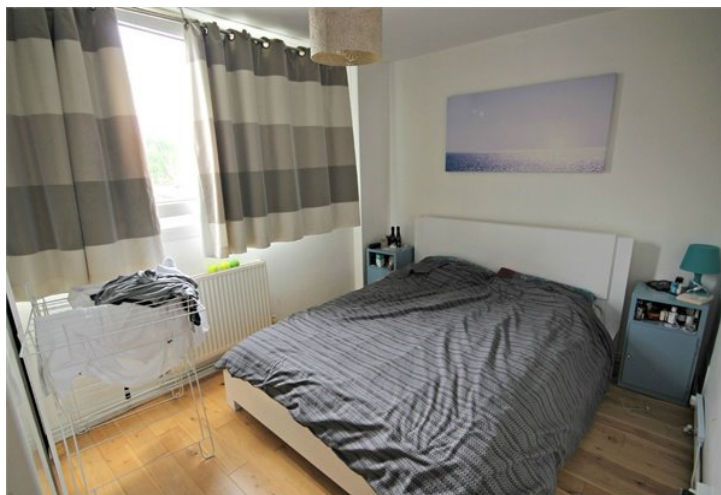
To enquire or arrange a viewing call
020 8459 4555.

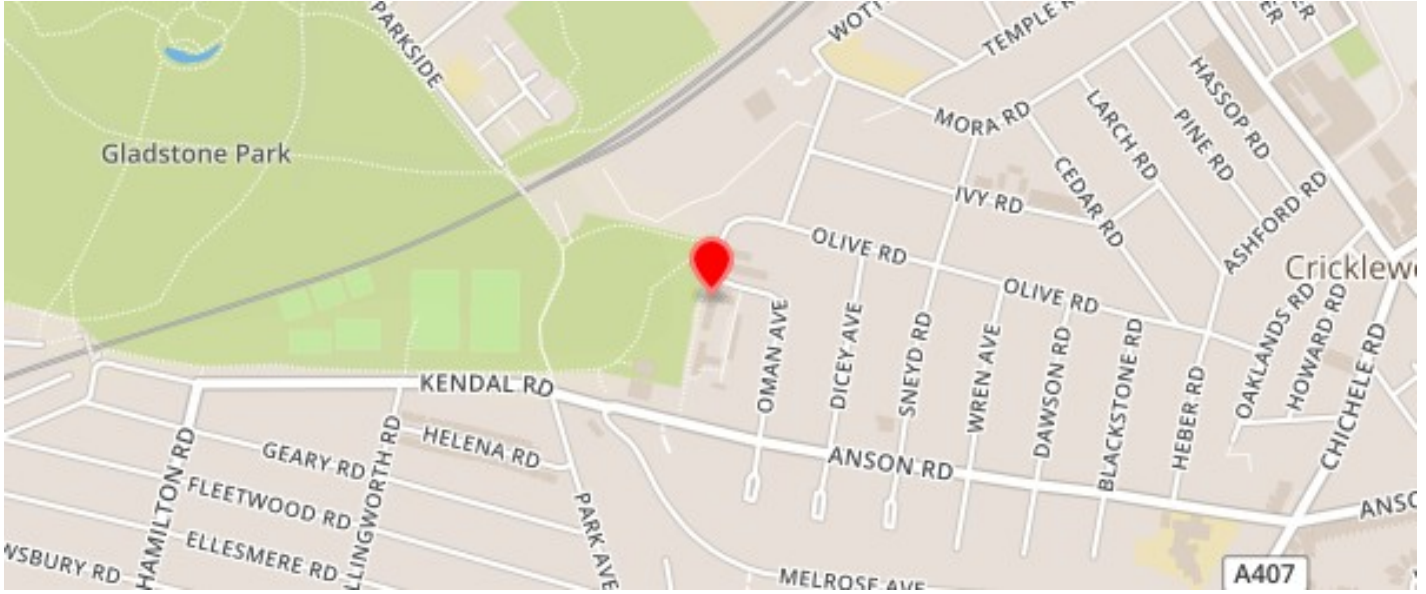
www.parkinsonfarr.co.uk





- P.Built
- 2 Beds
- 1 Reception
- 1 Bathroom
- Energy Rating : E
- Council Tax Band C
- Furnished
- Parking

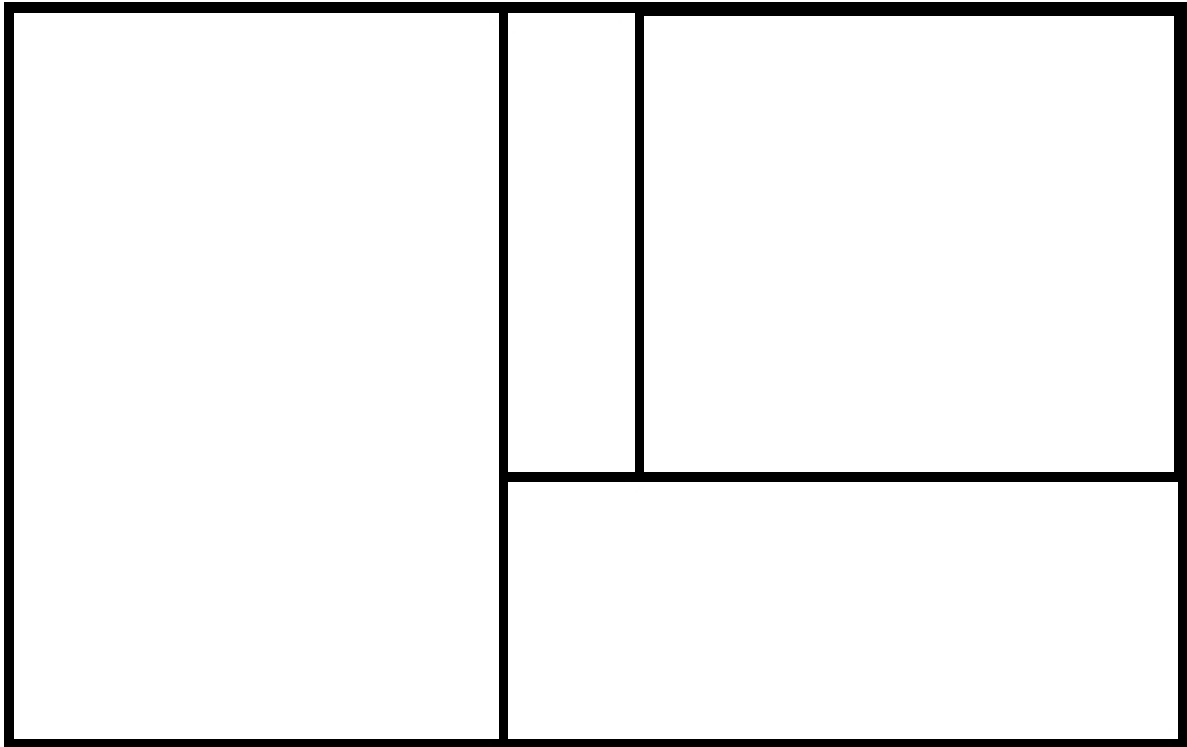
Directions





Energy Efficiency Rating		
	Current	Potential
Very energy efficient - lower running costs		
(92-100) A		
(81-91) B		
(69-80) C		75
(55-68) D		
(39-54) E	50	
(21-38) F		
(1-20) G		
Not energy efficient - higher running costs		
England	EU Directive 2002/91/EC	

Environmental Impact (CO ₂) Rating		
	Current	Potential
Very environmentally friendly - lower CO ₂ emissions		
(92-100) A		
(81-91) B		
(69-80) C		75
(55-68) D		
(39-54) E	43	
(21-38) F		
(1-20) G		
Not environmentally friendly - higher CO ₂ emissions		
England	EU Directive 2002/91/EC	



**Waiting for
Floorplan**