



9 Coopers Court, Shefford, SG17 5JR

£1,095 Per Month

An immaculate two bedroom first floor apartment, located in a sought after block located within a short walk to Shefford Town. The property is presented in excellent order throughout with a fully fitted kitchen, large lounge, master bedroom with en-suite, second bedroom with Juliet balcony and a spacious bathroom. Available Now.

Entrance Hall

Inset spotlights, communal entrance phone.

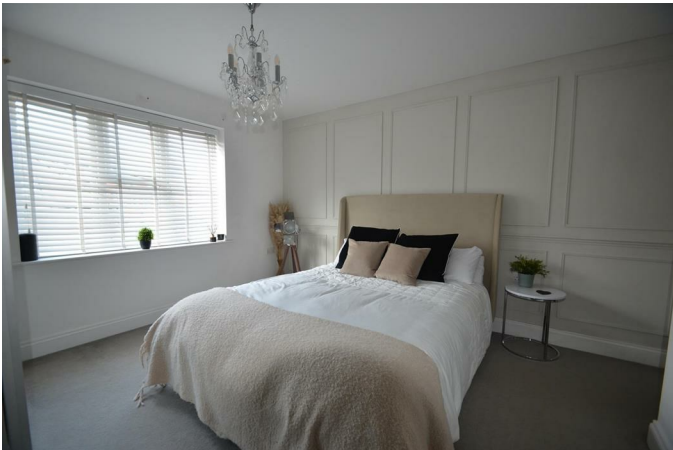
Lounge 14'4" x 14'2" (4.39 x 4.32)

Three uPVC double glazed windows to front, inset spotlights, door to:-

Kitchen 10'0" x 6'0" (3.05 x 1.85)

Range of base and eye level units with roll top work surfaces, stainless steel sink with mixer tap, integrated oven and gas hob, integrated fridge/freezer, dishwasher and washer dryer, cupboard housing wall mounted boiler, tiled floor, inset spotlights, uPVC double glazed window to side.

Bedroom One 15'5" x 11'8" (4.72 x 3.56)



uPVC double glazed window to rear, radiator, door to:-

En-Suite



Suite comprising of fully tiled shower cubicle, low level w.c, pedestal wash hand basin, uPVC double glazed window to rear, inset spot lights, extractor fan, tiled floor.

Bedroom Two 9'8" x 7'6" (2.97 x 2.29)

Radiator, French doors onto balcony.

Bathroom



White suite comprising of panelled bath with mixer tap, low level w.c, pedestal wash hand basin, inset spotlights, extractor fan, tiled floor.

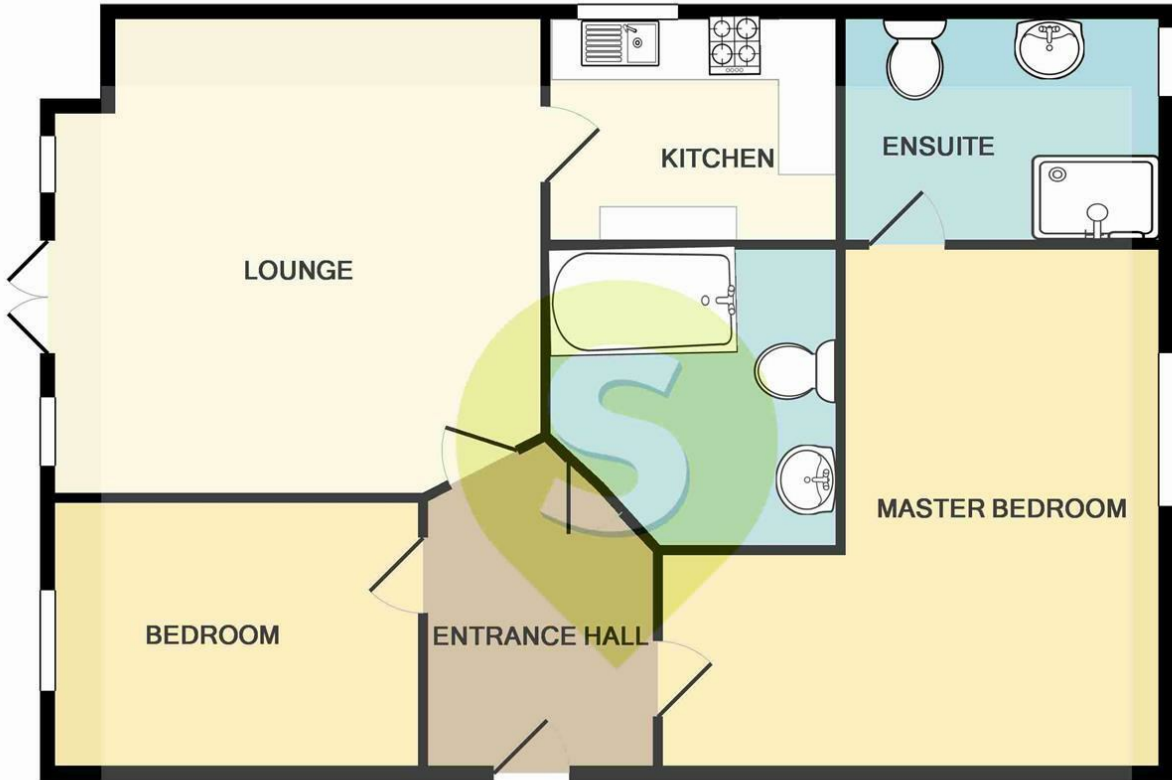
Agents Notes

Deposit £1263.

Minimum tenancy term 6 months.

Council tax band B.

Floor Plan

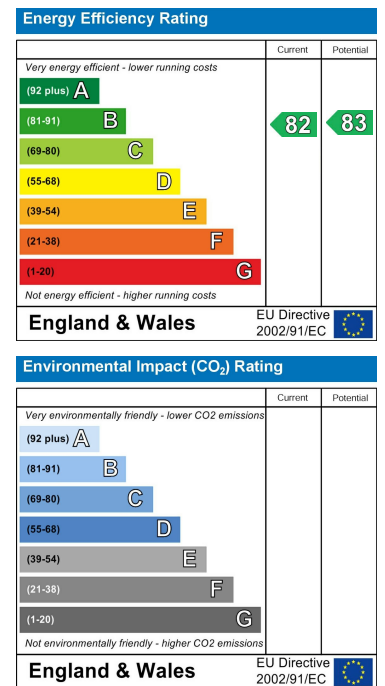


Whilst every attempt has been made to ensure the accuracy of the floor plan contained here, measurements of doors, windows, rooms and any other items are approximate and no responsibility is taken for any error, omission, or mis-statement. This plan is for illustrative purposes only and should be used as such by any prospective purchaser. The services, systems and appliances shown have not been tested and no guarantee as to their operability or efficiency can be given
 Made with Metropix ©2016

Area Map



Energy Efficiency Graph



These particulars, whilst believed to be accurate are set out as a general outline only for guidance and do not constitute any part of an offer or contract. Intending purchasers should not rely on them as statements of representation of fact, but must satisfy themselves by inspection or otherwise as to their accuracy. No person in this firm's employment has the authority to make or give any representation or warranty in respect of the property.

22 High Street, Shefford, Bedfordshire, SG17 5DG

Tel: 01462 814087 Email: enquiries@sheridans-estates.com <https://www.sheridans-estates.com>