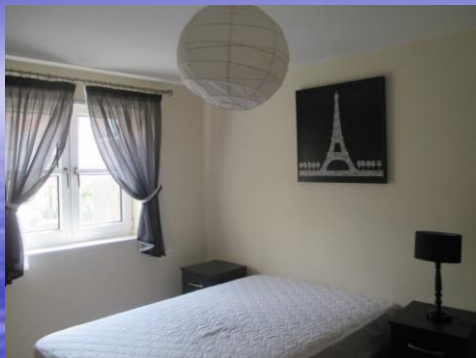


# PROPERTY TO LET



**Aylward Street, Portsmouth, PO1 3FG**

**£1,160 pcm**

**AVAILABLE AUGUST 2022**

**2 DOUBLE BEDROOMS APARTMENT INCLUSIVE OF GAS & SECURE ALLOCATED PARKING**

Stunning two double bedroom flat situated just a stones throw away from Gunwharf. The property is inclusive of gas and has secure allocated parking.

Perfect for a student or professional let.

- 2 double Bedrooms
- Parking
- Fully furnished
- Double glazed
- Central Heating
- EPC Rating: 81