



**.36 Walford Road
Uxbridge, London UB8 2NG**

£3,462 PCM

****STUDENTS****

6 BEDROOMS - AVAILABLE 21/08/2025

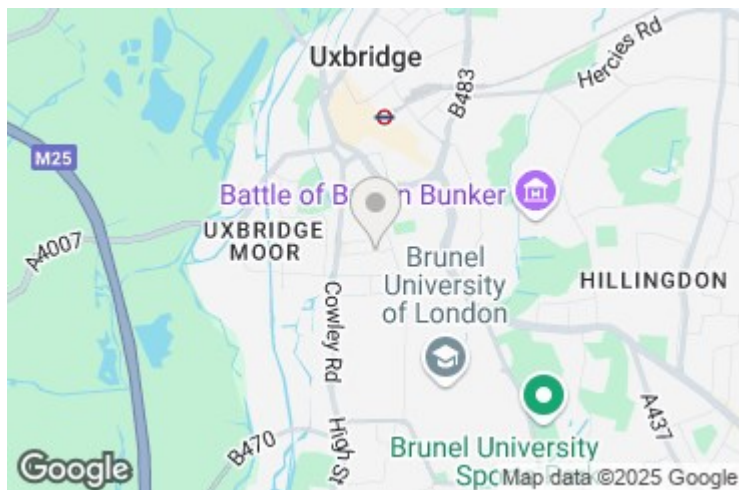
The rental payments equate to approx £577 per person per month or £133 per person per week excluding bills. UniHomes offer a bills package for £21 per person per week. (Incl Gas, Electric, Water, TV licence and internet) which can be organised through Nupad initially.

Nupad offer this excellent SIX bedroom house comprising of SIX FURNISHED BEDROOMS , TWO BATHROOM KITCHEN, rear GARDEN.

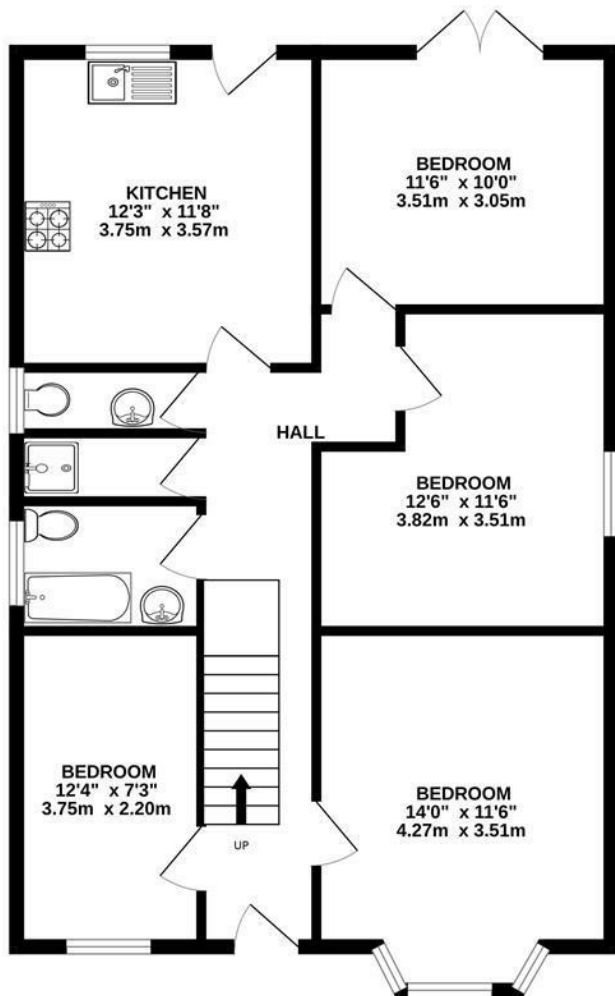
The property is ideal for students at Brunel University as it's close to campus. It is also nearby to direct bus routes to Uxbridge Town Centre, Heathrow, Stockley Park and the local underground station, which provides further access to Central London.

COUNCIL TAX BAND E
EPC E

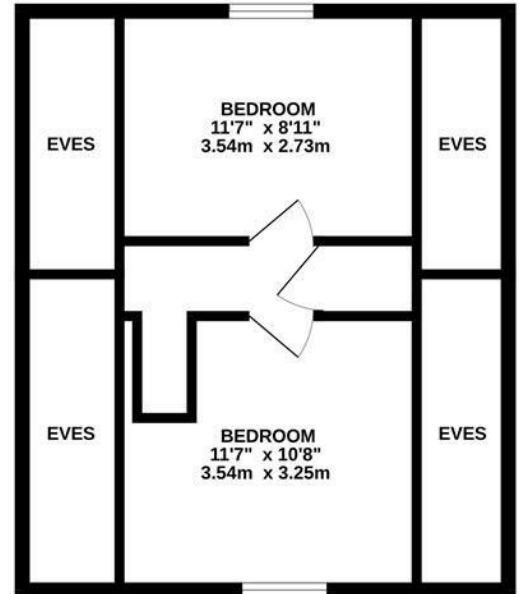
.36 Walford Road, Uxbridge, London UB8 2NG



GROUND FLOOR
818 sq.ft. (76.0 sq.m.) approx.



1ST FLOOR
428 sq.ft. (39.8 sq.m.) approx.



TOTAL FLOOR AREA : 1246 sq.ft. (115.7 sq.m.) approx.

Whilst every attempt has been made to ensure the accuracy of the floorplan contained here, measurements of doors, windows, rooms and any other items are approximate and no responsibility is taken for any error, omission or mis-statement. This plan is for illustrative purposes only and should be used as such by any prospective purchaser. The services, systems and appliances shown have not been tested and no guarantee as to their operability or efficiency can be given.
Made with Metropix ©2023

| Energy Efficiency Rating | | |
|---|-------------------------|-----------|
| | Current | Potential |
| Very energy efficient - lower running costs | | |
| (92 plus) A | | |
| (81-91) B | | |
| (69-80) C | | |
| (55-68) D | | |
| (39-54) E | | |
| (21-38) F | | |
| (1-20) G | | |
| Not energy efficient - higher running costs | | |
| England & Wales | | |
| | EU Directive 2002/91/EC | |

| Environmental Impact (CO ₂) Rating | | |
|---|-------------------------|-----------|
| | Current | Potential |
| Very environmentally friendly - lower CO ₂ emissions | | |
| (92 plus) A | | |
| (81-91) B | | |
| (69-80) C | | |
| (55-68) D | | |
| (39-54) E | | |
| (21-38) F | | |
| (1-20) G | | |
| Not environmentally friendly - higher CO ₂ emissions | | |
| England & Wales | | |
| | EU Directive 2002/91/EC | |