



6 Pillions Lane, Hayes, Middlesex, UB4 8HG

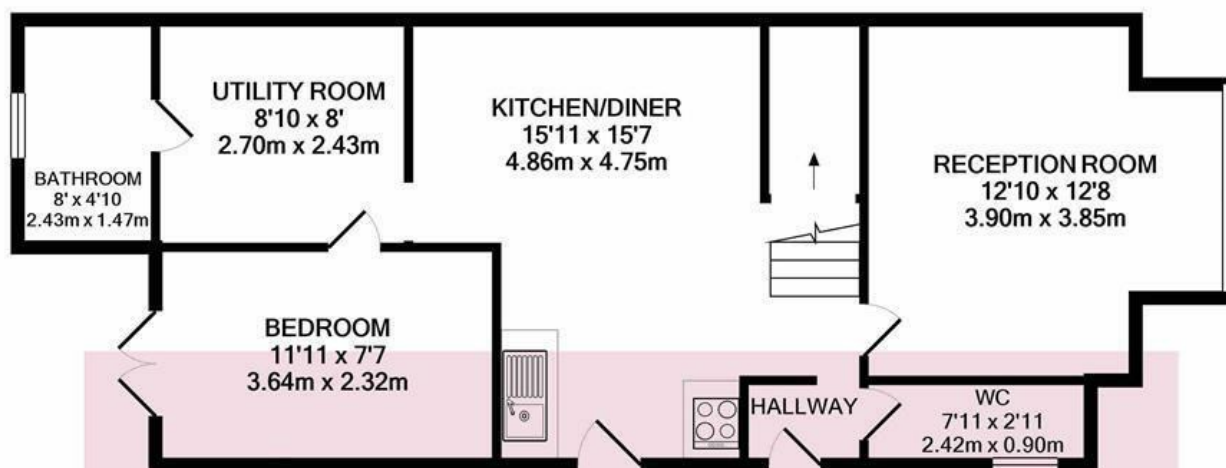
This four bedroom semi detached cottage is available to let immediately and is a very attractive property for a professional family.

Situated within a quiet location at the end of Hayes End Close which can be accessed from Hayes End Drive on a large plot with a fantastic size garden. The property also benefits from parking for 2 cars.

Please contact our office for further details and to arrange a viewing.

- Cottage
- End Of Terrace
- Available Immediately
- Three Bedrooms
- Downstairs WC
- Hayes
- Large Private Garden
- Garage

£2,100 Per Month



GROUND FLOOR
APPROX. FLOOR
AREA 593 SQ.FT.
(55.1 SQ.M.)



1ST FLOOR
APPROX. FLOOR
AREA 486 SQ.FT.
(45.2 SQ.M.)

TOTAL APPROX. FLOOR AREA 1079 SQ.FT. (100.3 SQ.M.)

Whilst every attempt has been made to ensure the accuracy of the floor plan contained here, measurements of doors, windows, rooms and any other items are approximate and no responsibility is taken for any error, omission, or mis-statement. This plan is for illustrative purposes only and should be used as such by any prospective purchaser. The services, systems and appliances shown have not been tested and no guarantee as to their operability or efficiency can be given

Made with Metropix ©2020

Energy Efficiency Rating		
	Current	Potential
Very energy efficient - lower running costs		
(92 plus) A		
(81-91) B		
(69-80) C		
(55-68) D		
(39-54) E		
(21-38) F		
(1-20) G		
Not energy efficient - higher running costs		
England & Wales	EU Directive 2002/91/EC	

Environmental Impact (CO ₂) Rating		
	Current	Potential
Very environmentally friendly - lower CO ₂ emissions		
(92 plus) A		
(81-91) B		
(69-80) C		
(55-68) D		
(39-54) E		
(21-38) F		
(1-20) G		
Not environmentally friendly - higher CO ₂ emissions		
England & Wales	EU Directive 2002/91/EC	