



## Newington Close

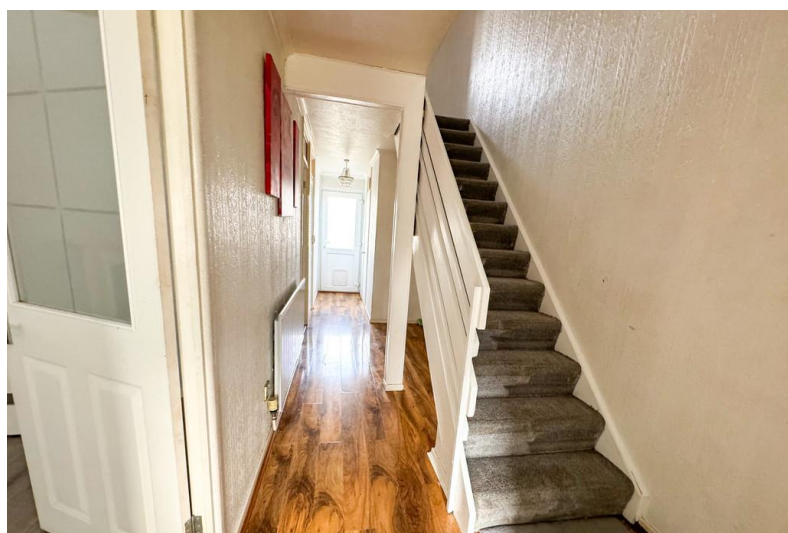
Southend-on-Sea

- TERRACED HOUSE
- THREE BEDROOMS
- RESIDENTIAL PARKING AREA
- REAR GARDEN

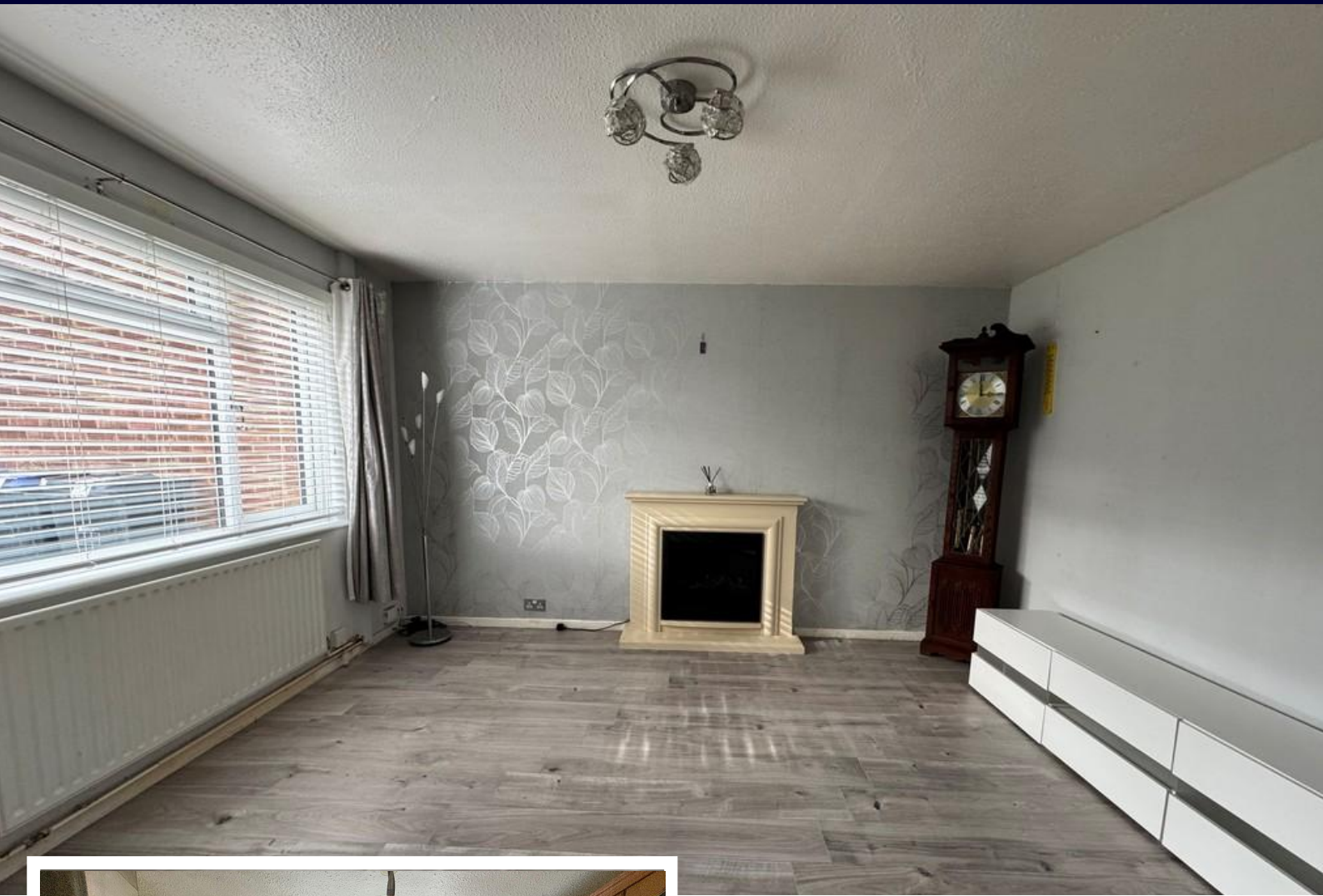


## Guide Price £300,000 to £325,000

A three bedroom terraced house in Newington Close, close-by to the city centre and offered to market with vacant possession.







Hair & Son are pleased to present this three bedroom terraced house in Newington Close located close to the city centre.

The home offers three well proportioned bedrooms, a living room to the front of the property. A fitted kitchen can be found to the rear with additional space for a dining table. Additionally on the ground floor there is also a wc. Lastly a family bathroom comprising a bathtub, toilet and wash hand basin.

Externally the property features a parking area and well maintained garden.

Offered to the market with vacant possession, therefore no onward chain.





## HALLWAY

27' 4" x 5' 9" (8.33m x 1.75m)

## LOUNGE

13' x 11' 8" (3.96m x 3.56m)

## KITCHEN

13' 7" x 11' 7" (4.14m x 3.53m)

## W.C.

## BEDROOM ONE

13' 6" x 10' 2" (4.11m x 3.1m)

## BEDROOM TWO

13' 3" x 9' (4.04m x 2.74m)

## BEDROOM THREE

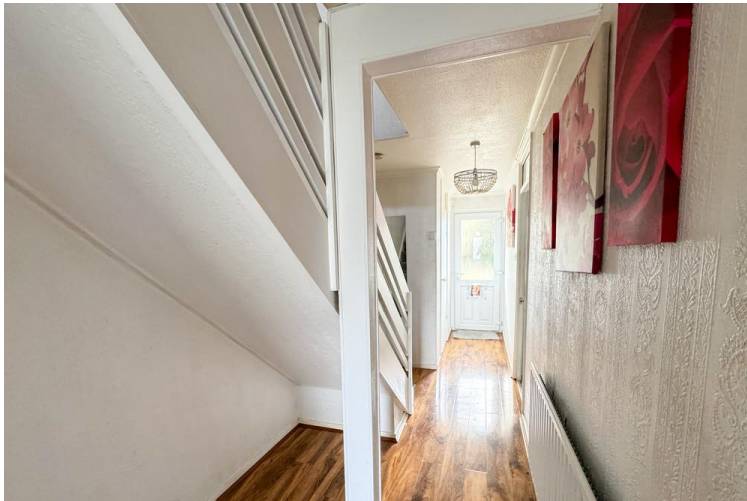
9' x 7' 7" (2.74m x 2.31m)

## LANDING

## BATHROOM

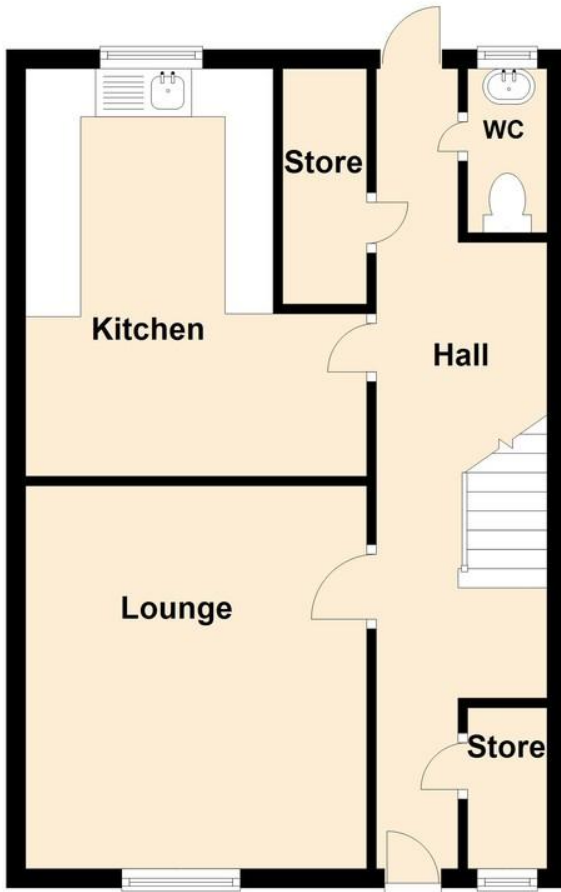
## GARDEN

These particulars are accurate to the best of our knowledge but do not constitute an offer or contract. Photos are for representation only and do not imply the inclusion of fixtures and fittings. The floor plans are not to scale and only provide an indication of the layout.



## Ground Floor

Approx. 45.3 sq. metres (487.5 sq. feet)



## First Floor

Approx. 47.0 sq. metres (505.6 sq. feet)



Total area: approx. 92.3 sq. metres (993.1 sq. feet)

Regulated by RICS

t. 01702 34 11 77  
More than an estate agent  
[www.hairandson.co.uk](http://www.hairandson.co.uk)

**Residential Sales**  
190 London Road  
Southend-On-Sea  
Essex SS1 1PJ

