



St. Georges Park Avenue

Westcliff-on-Sea

- END TERRACE HOUSE
- THREE BEDROOMS
- EASY TO MAINTAIN REAR GARDEN
- SOUGHT AFTER WESTCLIFF LOCATION



Guide Price £375,000

Three bed end terrace home positioned within popular Leigh/Westcliff borders, just a short stroll from the nearby Chalkwell park, the seafront and station. In need of some modernisation throughout but provides great potential to make your mark on.





Three bed end terrace home positioned within a popular Leigh/Westcliff borders, just a short stroll from the nearby Chalkwell park, the seafront and station. In need of some modernisation throughout but provides great potential to make your mark on.

The home boasts two reception rooms which can be utilised as completely separate rooms or can be allowed to seamlessly flow through to each other. To the rear you have a fitted kitchen with a range of eye and base level units. With access to the rear garden can be provided from this room.

Upstairs the property has two double bedrooms and a single bedroom to the front. A bathroom comprising of a bathtub and wash hand basin, and a separate WC can also be found.

Externally you have a fully paved rear garden with a garden shed to the back.



HALL

17' 10" x 5' 4" (5.44m x 1.63m)

LIVING ROOM

16' 8" x 10' 4" (5.08m x 3.15m)

DINING ROOM

12' 0" x 10' 2" (3.66m x 3.1m)

KITCHEN

11' 8" x 6' 9" (3.56m x 2.06m)



UPSTAIRS HALL

16' 2" x 5' 7" (4.93m x 1.7m)

BATHROOM

6' 7" x 3' 9" (2.01m x 1.14m)

WC

4' 7" x 2' 4" (1.4m x 0.71m)

BEDROOM ONE

16' 3" x 10' 0" (4.95m x 3.05m)

BEDROOM TWO

12' 3" x 10' 5" (3.73m x 3.18m)

BEDROOM THREE

9' 3" x 5' 7" (2.82m x 1.7m)

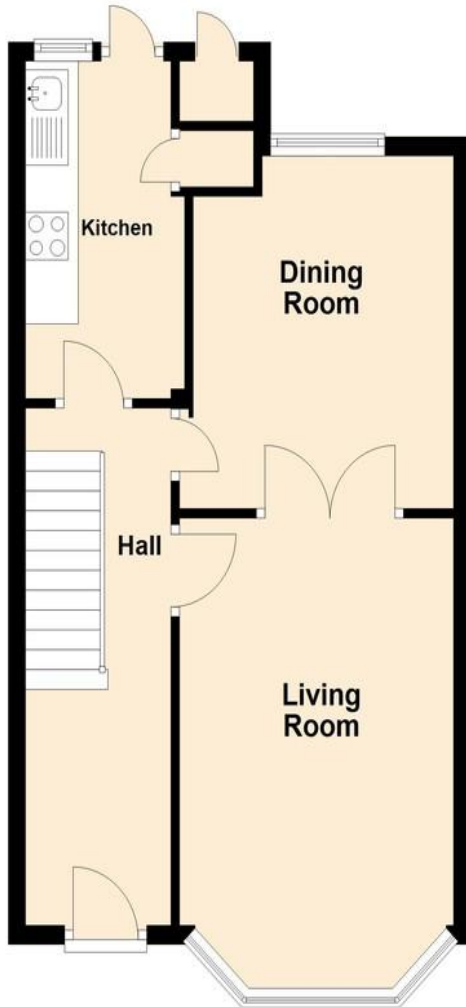
GARDEN

These particulars are accurate to the best of our knowledge but do not constitute an offer or contract. Photos are for representation only and do not imply the inclusion of fixtures and fittings. The floor plans are not to scale and only provide an indication of the layout.



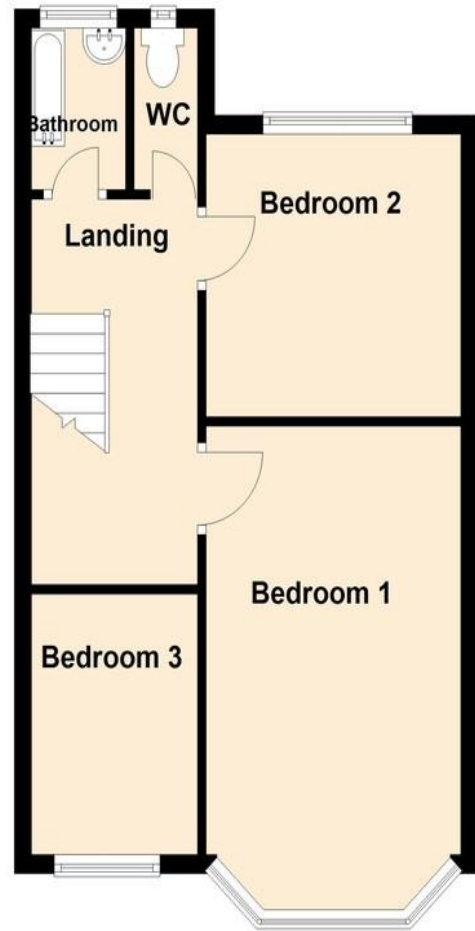
Ground Floor

Approx. 43.6 sq. metres (469.6 sq. feet)



First Floor

Approx. 40.6 sq. metres (436.9 sq. feet)



Regulated by RICS

t. 01702 34 11 77
More than an estate agent
www.hairandson.co.uk

Residential Sales
190 London Road
Southend-On-Sea
Essex SS1 1PJ

