



London Road

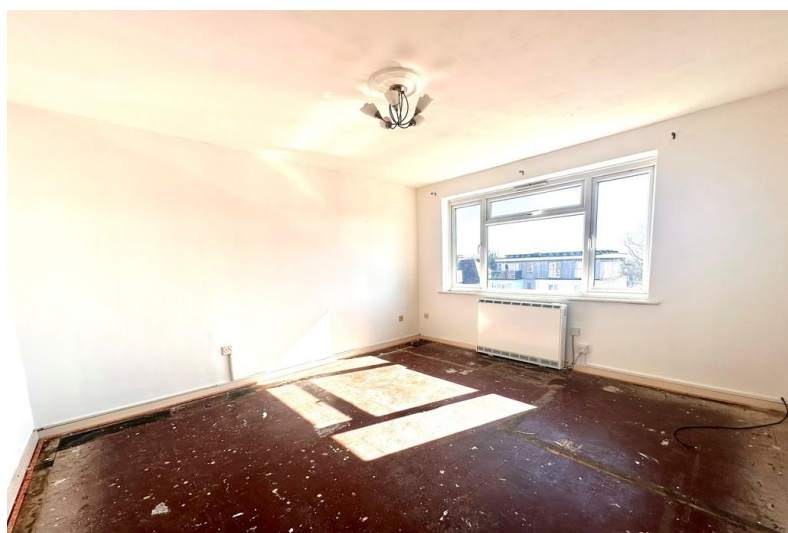
Leigh-on-Sea

- SECOND FLOOR PURPOSE BUILT FLAT
- TWO DOUBLE BEDROOMS
- IN NEED OF MODERNISATION
- LARGE LIVING ROOM



Guide Price £210,000

A fantastic opportunity to purchase a second floor flat in a popular residential block in Highlands Court, the property is in need of some modernisation throughout.





Purpose built second floor flat comprising two double bedrooms, lounge, kitchen, bathroom and wc.with shower. Electric heating. Double glazing. Great location on the London Road, close to local amenities and transport. The property is in need of modernisation throughout but offers a great opportunity for a first time buyer or an investor.

ENTRANCE LOBBY

Communal entrance lobby with stairs to second floor.

ENTRANCE HALL

Built in storage cupboards. Entry phone.

LOUNGE

13' 10" x 10' 2" (4.22m x 3.1m) Double glazed windows to front. Storage heater.

BATHROOM/WC

White bathroom suite comprising panelled bath with shower over, low flush W.C. and pedestal wash hand basin. Tiled walls. Obscure double glazed window to rear.



BEDROOM ONE

13' 10" x 10' 2" (4.22m x 3.1m) Double glazed windows to front. Storage heater.

BEDROOM TWO

13' 5" x 9' 2" (4.09m x 2.79m) Double glazed window to rear. Storage heater.

KITCHEN

Range of worktops and cupboards. Cooker point. Plumbing for washing machine. Double glazed window to rear.



GARDENS AND PARKING

Communal garden area and car parking area.

TENURE

LEASE - 999 YEAR LEASE

SERVICE CHARGE - ESTIMATED £1,400PA INCLUDING BUILDING INSURANCE

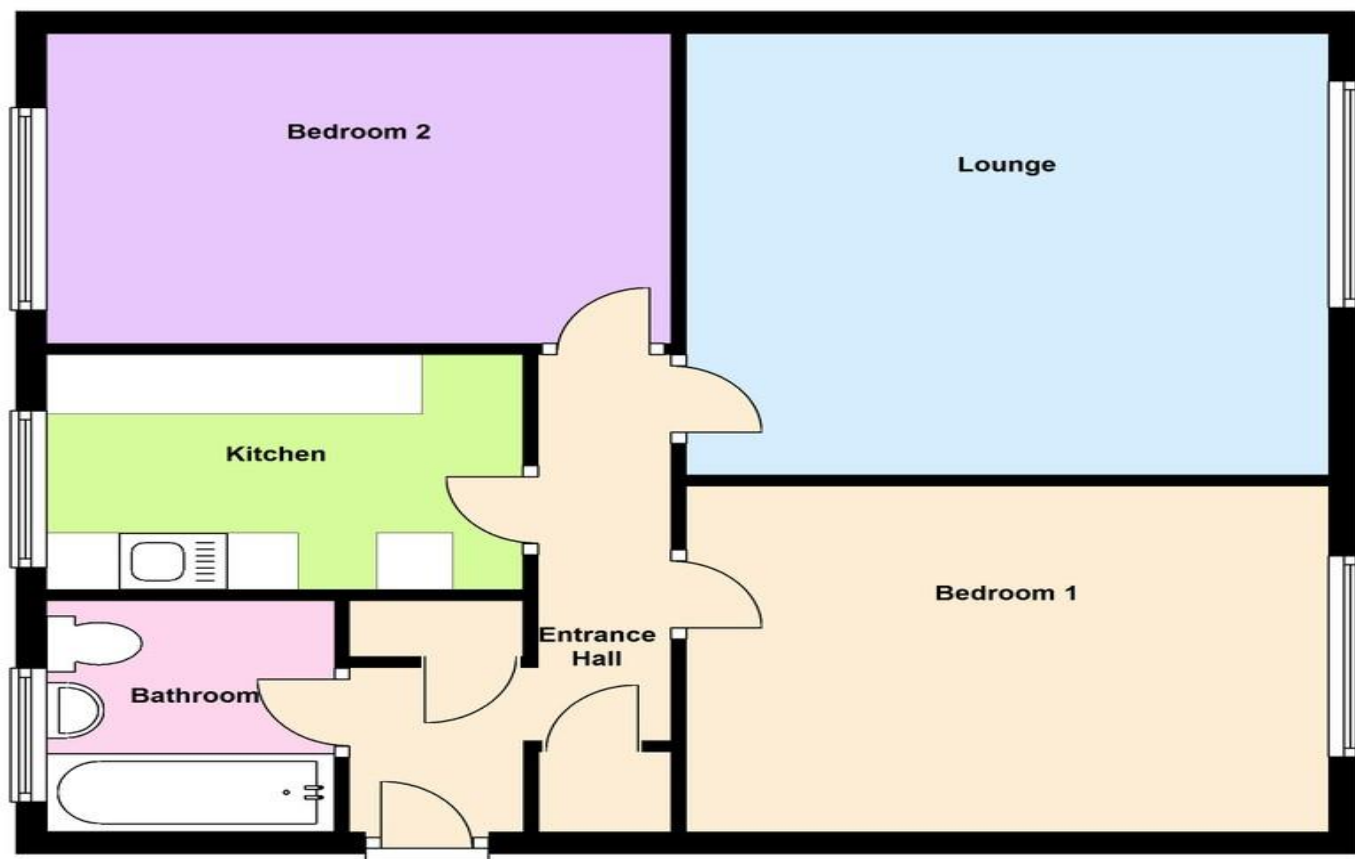
GROUND RENT - PEPPERCORN

EPC - TO BE CONFIRMED

COUNCIL TAX - BAND B

These particulars are accurate to the best of our knowledge but do not constitute an offer or contract. Photos are for representation only and do not imply the inclusion of fixtures and fittings. The floor plans are not to scale and only provide an indication of the layout.

Second Floor



Regulated by RICS

t. 01702 34 11 77
More than an estate agent
www.hairandson.co.uk

Residential Sales
190 London Road
Southend-On-Sea
Essex SS1 1PJ

