



## Gordon Place

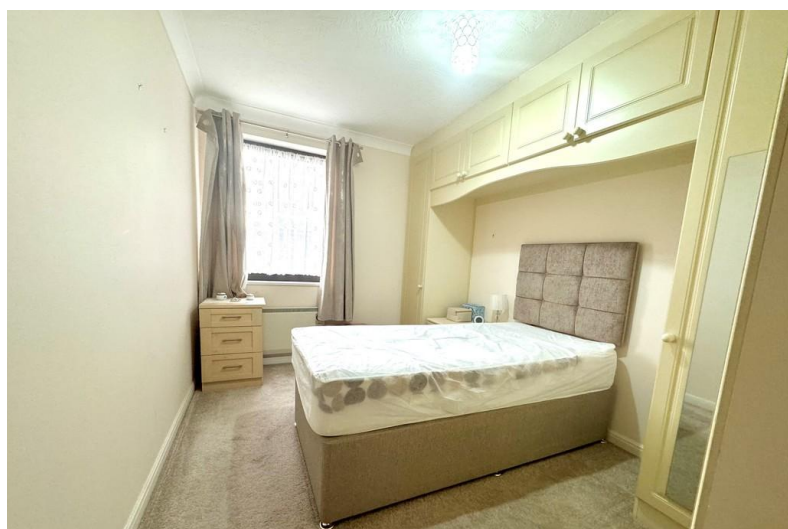
Southend-on-Sea

- ONE BEDROOM GROUND FLOOR FLAT
- SHARE OF FREEHOLD
- POPULAR RETIREMENT COMPLEX
- WALKING DISTANCE TO SOUTHEND CENTRAL STATION



**£139,000**

A ground floor one bedroom retirement flat situated in a popular retirement complex in Southend-On-Sea.







The retirement block is centrally situated in Southend making it perfect for the main line railway station and High Street. The building has exceptional facilities including a charming garden for use by all, fantastic communal lounge, hobbies room, laundry room, games room and so much more.

This retirement flat offers a great sized living room, this room flows in to the fitted kitchen which offers ample worktop and cupboard space.

The bedroom is neutrally decorated and features fitted wardrobes. The bathroom consists of a shower, a vanity unit that features a wash hand basin and a low level w/c. The last feature on offer internally is a large cupboard, which is a perfect storage space.

The property has the benefit of sliding patio doors which offers access to a nicely maintained garden area.

**LOUNGE/DINER**

15' 6" x 11' 1" (4.72m x 3.38m)

**BEDROOM**

12' 2" x 8' 6" (3.71m x 2.59m)

**KITCHEN**

7' 9" x 6' 7" (2.36m x 2.01m)

**BATHROOM**

6' 7" x 6' 7" (2.01m x 2.01m)

**STORAGE**

6' 7" x 4' 9" (2.01m x 1.45m)

**LEASE**

LEASE REMAINING - 996 YEARS (SHARE OF FREEHOLD)

SERVICE CHARGE - £229.78 PER MONTH

COUNCIL TAX BAND C

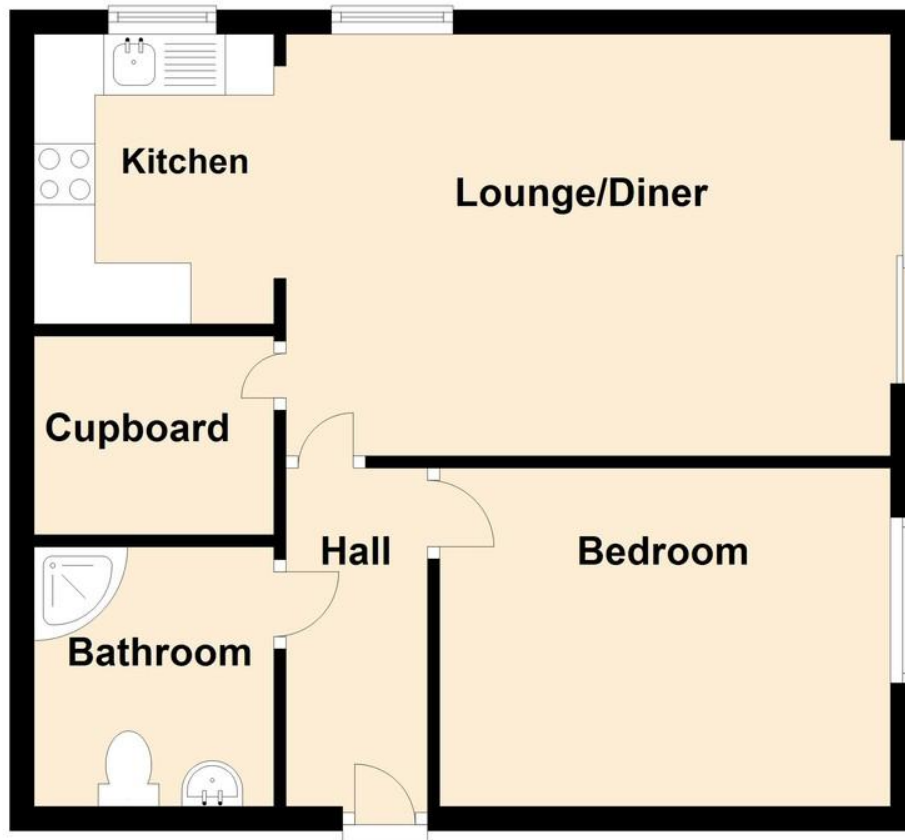
EPC RATING C



These particulars are accurate to the best of our knowledge but do not constitute an offer or contract. Photos are for representation only and do not imply the inclusion of fixtures and fittings. The floor plans are not to scale and only provide an indication of the layout.

## Ground Floor

Approx. 44.7 sq. metres (480.9 sq. feet)



Total area: approx. 44.7 sq. metres (480.9 sq. feet)

Regulated by RICS

t. 01702 34 11 77

More than an estate agent

[www.hairandson.co.uk](http://www.hairandson.co.uk)

**Residential Sales**  
190 London Road  
Southend-On-Sea  
Essex SS1 1PJ

