



Holland Road

Westcliff-on-Sea

- NO ONWARD CHAIN
- GROUND FLOOR
- STUNNING ESTUARY VIEWS
- MODERN DOUBLE SHOWER ROOM



Guide Price £180,000

NO ONWARD CHAIN. Stunning views over the Estuary one bedroom ground floor retirement flat with a large communal patio area with exceptional views over the Estuary. Modern double shower room double glazing and sliding patio doors to a communal patio area. Very well presented throughout. Keys available for viewing.





AGENTS NOTES

Rather unique one bedroom retirement apartment located on the ground floor and very nicely presented throughout.

Fully double glazed with sliding patio doors coming off the lounge to an exceptional seduded communal patio which is a fantastic size and offers breath-taking views over the Estuary in all directions.

Intemally there is a separate dining area with direct access to the kitchen.

The bathroom has been updated to a modern double shower room with tiling.



HALLWAY

LOUNGE

13' 6" x 10' 6" (4.11m x 3.2m)

DINING AREA

8' 8" x 7' 4" (2.64m x 2.24m)

KITCHEN

5' 7" x 5' 4" (1.7m x 1.63m)

SHOWER ROOM

PATIO

LEASE

Lease - 60 Years remaining.

EPC - C

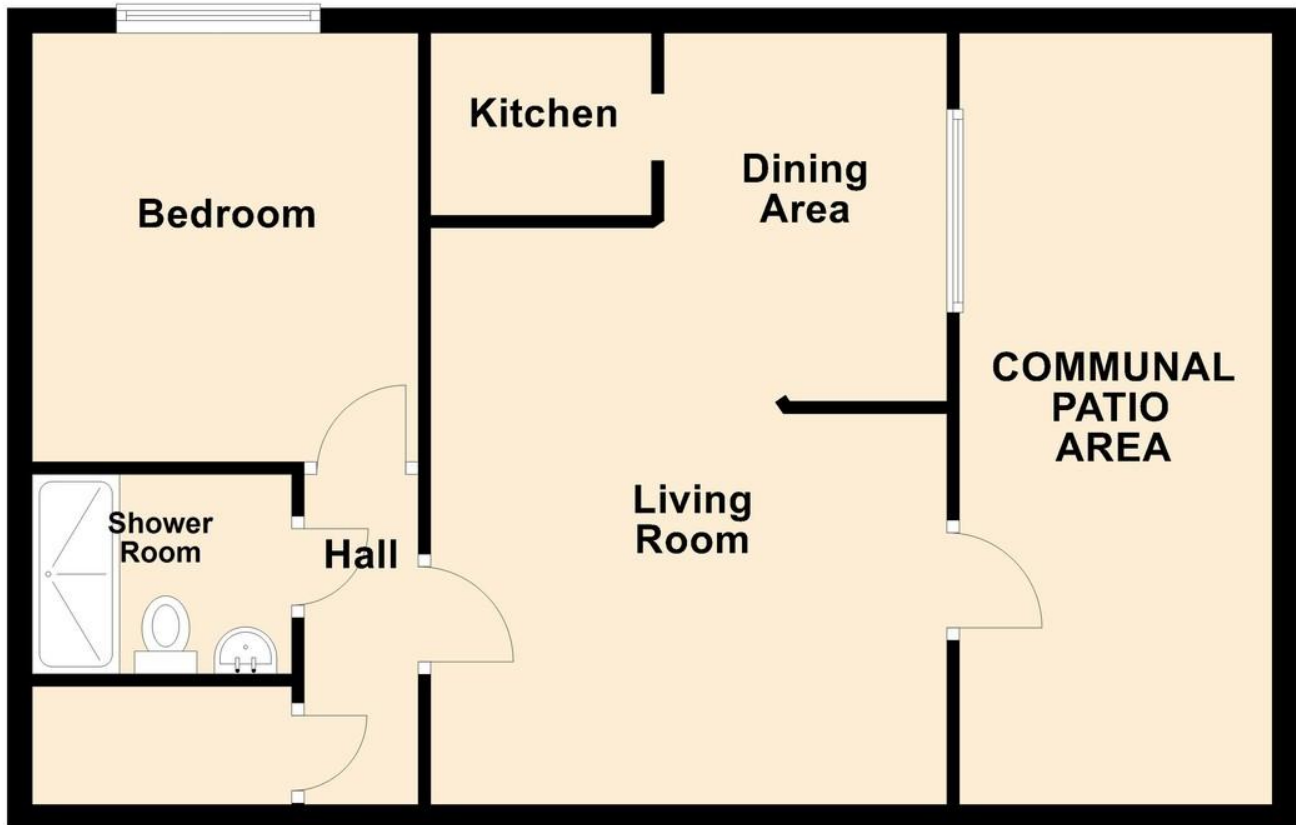
Council Tax Band - C

These particulars are accurate to the best of our knowledge but do not constitute an offer or contract. Photos are for representation only and do not imply the inclusion of fixtures and fittings. The floor plans are not to scale and only provide an indication of the layout.



Ground Floor

Approx. 61.4 sq. metres (661.0 sq. feet)



Total area: approx. 61.4 sq. metres (661.0 sq. feet)

Regulated by RICS

t. 01702 34 11 77
More than an estate agent
www.hairandson.co.uk

Residential Sales
190 London Road
Southend-On-Sea
Essex SS1 1PJ

