



## Admirals Walk

Shoeburyness,

- DETACHED HOUSE
- FOUR BEDROOMS
- GREAT POTENTIAL
- GARAGE AND OFF ROAD PARKING



## Guide Price £415,000

**\*\*NO ONWARD CHAIN\*\*** Offering a fabulous three double bedroom semi detached house in a sought after location in Shoeburyness.







An attractive three double bedroom semi detached home in a sought after area of Shoeburyness, welcome to Admirals Walk.

This home would make for a great purchase for those who are looking for a wonderful family home, boasting plenty of potential as well spacious accommodation throughout.

The ground floor of this property features a fitted kitchen which has space for a dining table, a spacious living room measuring 18'4 x 11'7, a conservatory to the rear. A w/c also completes the downstairs accommodation.

The first floor boasts three double bedrooms and a family bathroom featuring a shower, bathtub, wash hand basin and a low level w/c.

Externally you have a lovely west backing rear garden which is a mixture of a paved patio area and grass laid out lawn. To the front you have a driveway where you can park two cars and additionally a garage.





The property is offered to the market with vacant possession, therefore no onward chain.

#### **HALL**

#### **KITCHEN**

14' 4" x 8' 4" (4.37m x 2.54m)

#### **LIVING ROOM**

18' 4" x 11' 7" (5.59m x 3.53m)

#### **CONSERVATORY**

9' 1" x 8' 8" (2.77m x 2.64m)

#### **WC**

#### **BEDROOM ONE**

11' 8" x 9' 6" (3.56m x 2.9m)

#### **BEDROOM TWO**

11' 7" x 8' 4" (3.53m x 2.54m)

#### **BEDROOM THREE**

12' 0" x 8' 4" (3.66m x 2.54m)



#### **BATHROOM**

#### **GARAGE**

#### **GARDEN**

These particulars are accurate to the best of our knowledge but do not constitute an offer or contract. Photos are for representation only and do not imply the inclusion of fixtures and fittings. The floor plans are not to scale and only provide an indication of the layout.



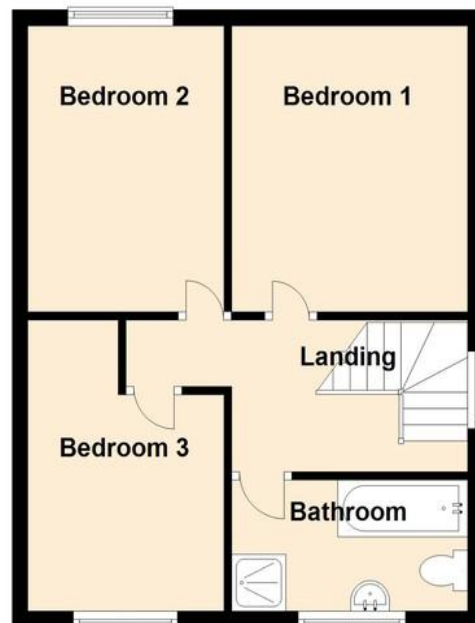
## Ground Floor

Approx. 61.0 sq. metres (656.2 sq. feet)



## First Floor

Approx. 41.0 sq. metres (441.1 sq. feet)



Total area: approx. 101.9 sq. metres (1097.3 sq. feet)

Regulated by RICS

t. 01702 34 11 77  
More than an estate agent  
[www.hairandson.co.uk](http://www.hairandson.co.uk)

**Residential Sales**  
190 London Road  
Southend-On-Sea  
Essex SS1 1PJ

