



Hildaville Drive

Westcliff-on-Sea

- FOUR BEDROOMS
- TWO BATHROOMS
- 21' EN SUITE LOFT BEDROOM
- WEST BACKING GARDEN



Guide Price £450,000

Stunning four bedroom luxurious home with a west backing garden, two bathrooms and a beautifully appointed open plan luxury kitchen/diner. En suite bedroom to the loft space. Just so much to take in !!





AGENTS NOTES

Without any doubt one of the nicest properties seen for some time and internally its an exceptional size with a very large en suite bedroom created in the loft space and two further double bedrooms to the first floor along with a fourth.

Just off the landing is the very nicely appointed bathroom with fully tiled walls and flooring.

The ground floor has it all! From the moment you enter the main hallway which is comfortable and inviting with luxury tiled flooring.

The main lounge to the front has immense character with a fabulous central feature fireplace and natural wood flooring.

To the rear there is a jaw dropping open plan quality bespoke fitted kitchen with a top of the range finish including a substantial island unit, integrated appliances and magnificent quartz work tops and complimenting wall back splashes.

Stand out quartz tiled flooring and a glorious dining area with a feature painted panelled wall.

Featuring uPVC full length sliding patio doors open out to the West facing garden.

HALLWAY

LOUNGE

15' 6" x 11' 6" (4.72m x 3.51m)

KITCHEN/DINER

16' 7" x 17' 6" (5.05m x 5.33m)

CLOAKROOM

LANDING

BEDROOM

16' 2" x 10' 9" (4.93m x 3.28m)

BEDROOM

16' 6" x 10' 9" (5.03m x 3.28m)

BEDROOM

9' 0" x 6' 6" (2.74m x 1.98m)

BATHROOM

EN SUITE BEDROOM

21' 7" x 9' 7" (6.58m x 2.92m)

GARDEN

These particulars are accurate to the best of our knowledge but do not constitute an offer or contract. Photos are for representation only and do not imply the inclusion of fixtures and fittings. The floor plans are not to scale and only provide an indication of the layout.



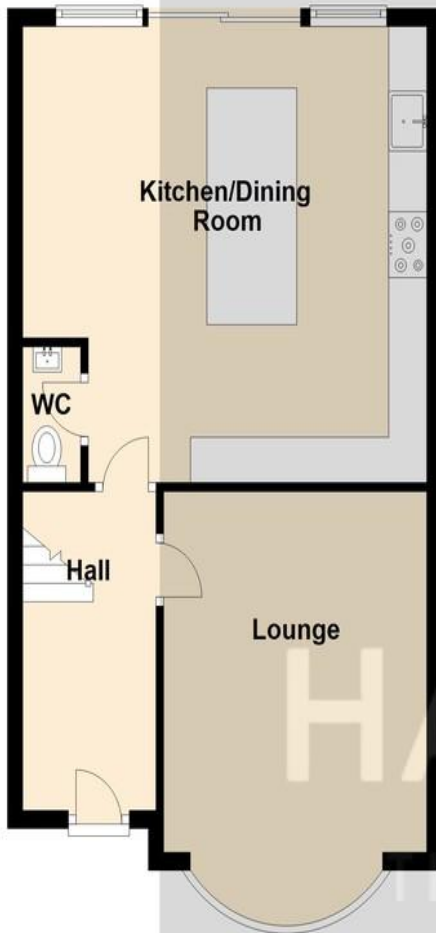






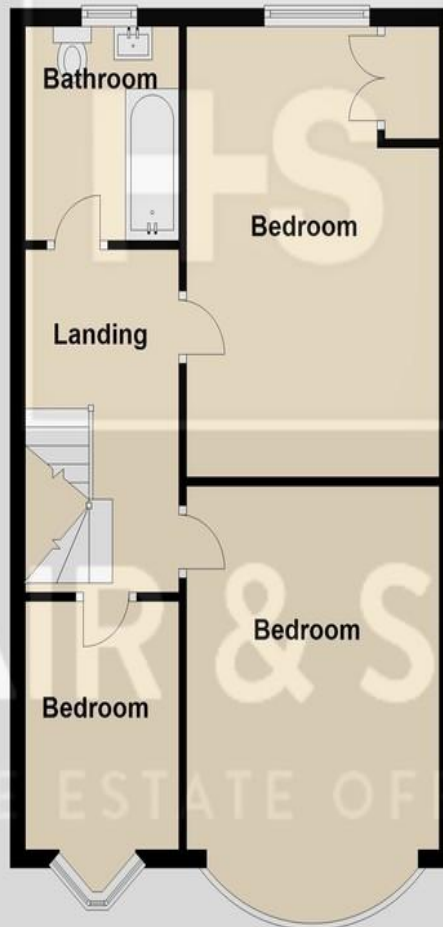
Ground Floor

Approx. 48.1 sq. metres (517.5 sq. feet)



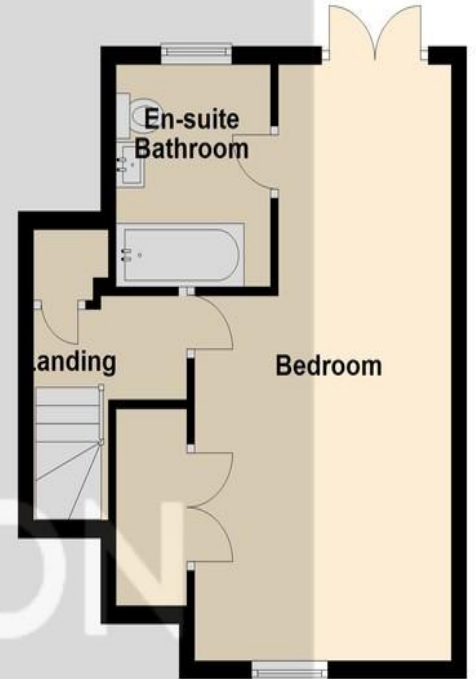
First Floor

Approx. 50.0 sq. metres (538.3 sq. feet)



Second Floor

Approx. 31.9 sq. metres (343.6 sq. feet)



Total area: approx. 130.0 sq. metres (1399.4 sq. feet)

Regulated by RICS

t. 01702 34 11 77
More than an estate agent
www.hairandson.co.uk

Residential Sales
190 London Road
Southend-On-Sea
Essex SS1 1PJ

