



George Street Shoeburyness

- STUNNINGLY PRESENTED INTERNALLY
- INCREDIBLY WELCOMING FAMILY HOME
- CHARMING EXTENDED FOUR BEDROOM COTTAGE
- JUST A FEW HUNDRED YARDS FROM EAST BEACH STATION



Guide Price £420,000

Stunning four bedroom extended cottage with En-suite to master bedroom. Charming open plan living room, fabulous extended cottage style kitchen/diner. Just a few hundred yards from East Beach and the Railway Station.





AGENTS NOTES

Oozing charm and character this cleverly extended four bedroom family cottage is located in an enviable position just a few hundred yards from East Beach Seafront and car park and a stones throw from Shoeburyness mainline railway station with regular train services to Fenchurch Street.

The property is beautifully presented and has a warm welcoming feel starting with the original twisted balustrade staircase with storage cupboards beneath. The living room provides access to the rear garden and measures 23' in depth with a central focal feature being the wood burner.

The extended kitchen/dining room measures 20' in depth with the combination of cottage style and modern cupboards. From the extension to the rear of this room there are double glazed doors and windows looking out to the very pretty rear garden.

The property also benefits from double glazing and gas



central heating. There are three generous size bedrooms to the first floor together with a family bathroom, within the loft space there is a master bedroom which has fantastic views from not only the En-Suite but the master bedroom, rear windows across East Beach and views out to the Estuary

This really is a gem and rare find particularly with the enormous size of the accommodation being offered.

HALLWAY

LIVING ROOM

23' 0" x 10' 0" (7.01m x 3.05m)

KITCHEN/DINER

20' 9" x 9' 0" (6.32m x 2.74m)

LANDING

BEDROOM TWO

13' 0" x 11' 0" (3.96m x 3.35m)

BEDROOM THREE

11' 0" x 8' 0" (3.35m x 2.44m)

BEDROOM FOUR

9' 0" x 7' 0" (2.74m x 2.13m)

BATHROOM

LOFT SPACE

MAIN BEDROOM / EN SUITE

18' 0" x 10' 0" (5.49m x 3.05m)

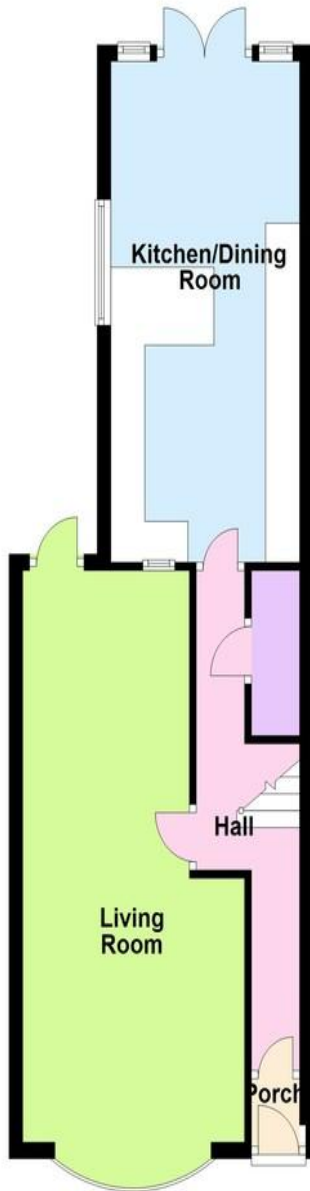
GARDEN

50' 0" (15.24m)

These particulars are accurate to the best of our knowledge but do not constitute an offer or contract. Photos are for representation only and do not imply the inclusion of fixtures and fittings. The floor plans are not to scale and only provide an indication of the layout.

Ground Floor

Approx. 45.9 sq. metres (494.4 sq. feet)



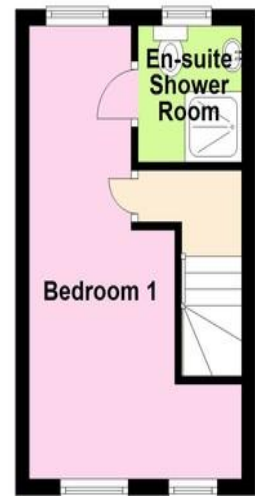
First Floor

Approx. 41.0 sq. metres (441.3 sq. feet)



Second Floor

Approx. 17.3 sq. metres (185.9 sq. feet)



Total area: approx. 104.2 sq. metres (1121.6 sq. feet)

Regulated by RICS

t. 01702 34 11 77
More than an estate agent
www.hairandson.co.uk

Residential Sales
190 London Road
Southend-On-Sea
Essex SS1 1PJ

