



School Lane, Guildford, Surrey
Price On Application

CLARKE  GAMMON
WELLERS

GREYBROOK HOUSE SCHOOL LANE
GUILDFORD SURREY GU3 1AS

Price On Application



THE PROPERTY

Type your text here



SITUATION

THE GROUNDS

Type your text here

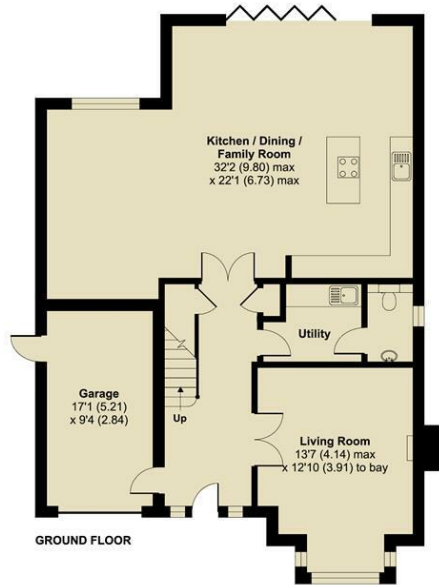
GUILFORD | X miles
LONDON WATERLOO | x MINUTES BY TRAIN

GODALMING | X miles
LONDON WATERLOO | 47 MINUTES BY TRAIN

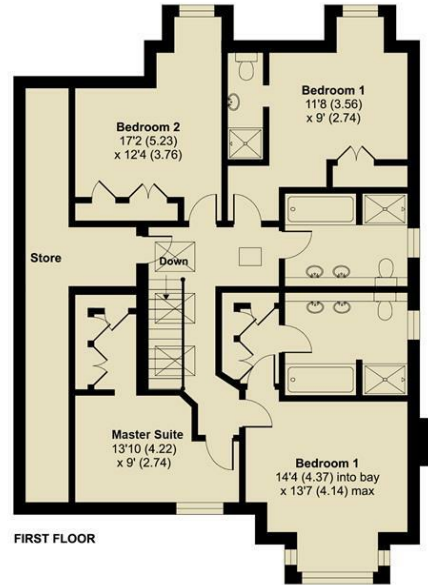
HASELMERE | 4 miles
LONDON WATERLOO | 47 MINUTES BY TRAIN

CENTRAL LONDON | 30 miles

GREYBROOK HOUSE - FLOOR PLANS



GROUND FLOOR	IMPERIAL DIMENSIONS
Living Room	13'7 (4.14) x 12'10 (3.91)
Kitchen / Dining / Family room	32'2 (9.80) x 22'1 (6.73)
Garage	17'2 (5.23) x 12'4 (3.76)



FIRST FLOOR	IMPERIAL DIMENSIONS
Master Suite	13'10 (4.37) x 13'7 (4.14) max
Bedroom 2	11'8 (3.56) x 9' (2.74)
Bedroom 3	17'2 (5.23) x 12'4 (3.76)
Bedroom 4	13'10 (4.22) x 9' (2.74)

LOCAL AUTHORITY

type your text here

COUNCIL TAX

Band

SERVICES

Mains water, electricity, mains drainage
gas central heating

Energy Efficiency Rating		
	Current	Potential
Very energy efficient - lower running costs		
(92 plus) A		
(81-91) B		
(69-80) C		
(55-68) D		
(39-54) E		
(21-38) F		
(1-20) G		
Not energy efficient - higher running costs		
England & Wales	EU Directive 2002/91/EC	

CGW GUILDFORD OFFICE

4 QUARRY STREET, GUILDFORD, SURREY, GU1 3TY

T: 01483 880900

E: guildford.sales@clarkegammon.co.uk

clarkegammon.co.uk

DIRECTIONS

AGENT'S NOTE

Whilst we endeavour to make our sales particulars accurate and reliable, we wish to inform prospective purchasers that we have not carried out a detailed survey, nor tested the services, appliances and specific fittings. If there is any point which you would like to have further clarification upon, please contact this office.

ESTATE AGENTS CHARTERED SURVEYORS VALUERS LETTINGS AUCTIONEERS

GUILDFORD OFFICE
T: 01483 880 900

HASLEMERE OFFICE
T: 01428 664 800

LIPHOOK OFFICE
T: 01428 728 900

MAYFAIR OFFICE
T: 0870 112 7099

AUCTION ROOMS
T: 01483 223101

MAYFAIR
OFFICE GROUP

CLARKE  GAMMON
WELLERS