



Matthew James

St James House | St James Road | Surbiton | Surrey KT6 4QH

T: +44 (0) 20 8390 2266

E: enquiries@matthewjamesestateagents.co.uk

www.matthewjamesestateagents.co.uk



## Glenbuck Road, Surbiton, KT6 6DL

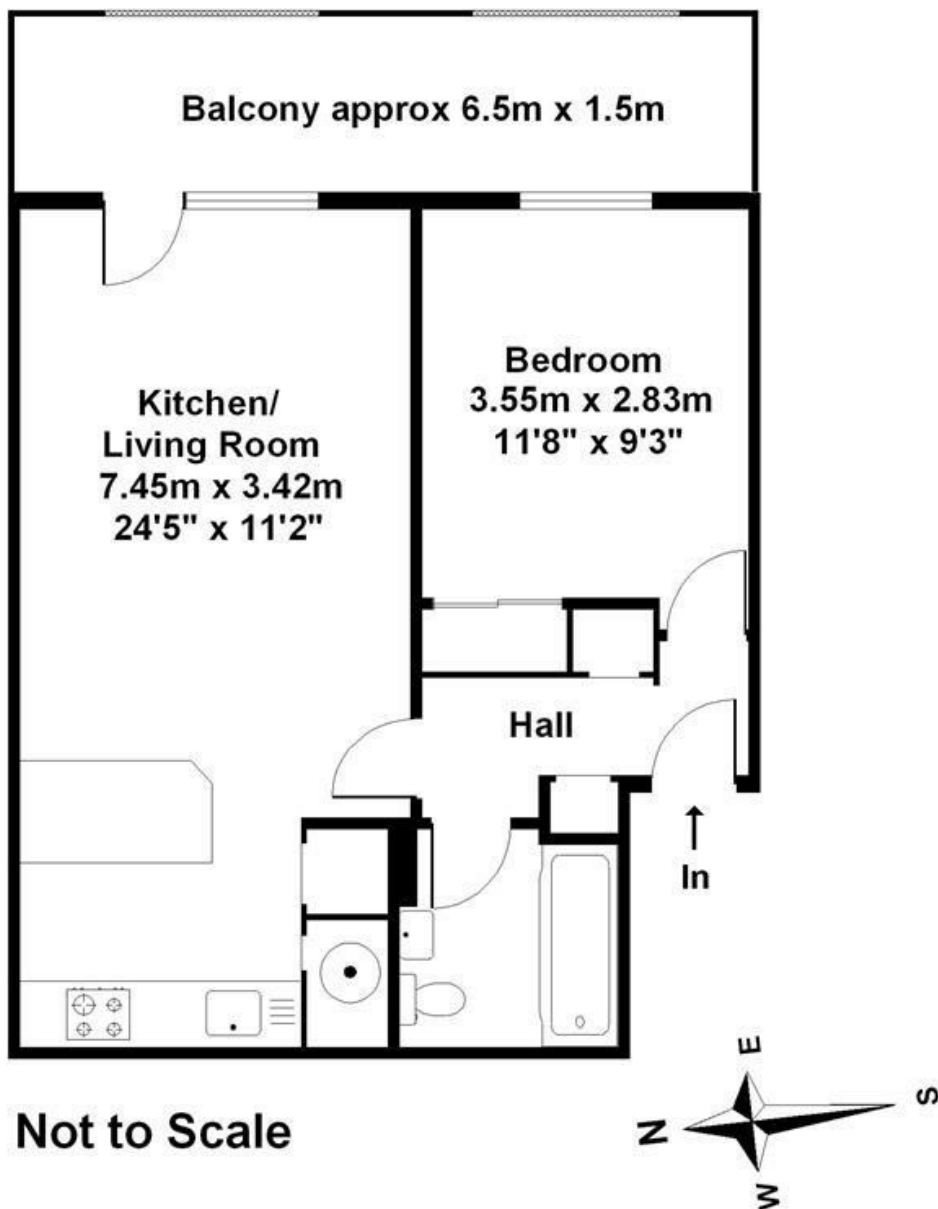
## TO LET

A spacious and well presented one bedroom apartment located within a very short walk of Surbiton mainline station and town centre. The property offers a living/dining room with access to balcony overlooking communal gardens, separate kitchen, double bedroom and bathroom. The property benefits from a secure underground parking space, private balcony and communal gardens. The property is offered unfurnished and is available immediately. Council Tax Band C

**£1,450 Per Calendar Month per calendar month (other fees may apply)**

**EPC Rating: D**

## Ground Floor



Approximate Gross Internal Floor Area:  
46m sq (494sq ft)

Whilst every attempt has been made to ensure the accuracy of this floor plan, room sizes and measurements are approximate and should not be relied upon for carpets and furnishings. These plans are for representation purposes only and no responsibility can be given for errors and omissions.

**© Copyright: Drawing Rooms 2012**

These sales particulars have been prepared as a general guide only. We have not carried out a detailed survey, tested the services, appliances or specific fittings. Your solicitor must confirm lease or freehold details. Carpets, curtains, gas fires, electrical goods/fittings or other fixtures, unless expressly mentioned, are not included in the sale of this property. If there are any important matter which are likely to affect your decision to buy, please contact this office and we will be pleased to check the information for you before viewing the property. Before this property can be removed from the market, all offer.; must be checked by our Financial Services Department. This is a service we offer on behalf of our clients. Please note that our room sizes are quoted in metres to the nearest tenth of a meter on a wall-to-wall basis. The imperial equivalent is only intended as an approximate guide for those not fully conversant with the metric measurements. All measurements have been taken using a sonic tape measure and therefore may be subject to a small margin of error.

Energy Efficiency Rating		Current	Potential
Very energy efficient - lower running costs			
(92 plus) <b>A</b>			
(81-91) <b>B</b>			
(69-80) <b>C</b>			
(55-68) <b>D</b>			
(39-54) <b>E</b>			
(21-38) <b>F</b>			
(1-20) <b>G</b>			
Not energy efficient - higher running costs			
<b>England &amp; Wales</b>		63	69
EU Directive 2002/91/EC			

Environmental Impact (CO <sub>2</sub> ) Rating		Current	Potential
Very environmentally friendly - lower CO <sub>2</sub> emissions			
(92 plus) <b>A</b>			
(81-91) <b>B</b>			
(69-80) <b>C</b>			
(55-68) <b>D</b>			
(39-54) <b>E</b>			
(21-38) <b>F</b>			
(1-20) <b>G</b>			
Not environmentally friendly - higher CO <sub>2</sub> emissions			
<b>England &amp; Wales</b>		42	50
EU Directive 2002/91/EC			