



Matthew James

St James House | St James Road | Surbiton | Surrey KT6 4QH

T: +44 (0) 20 8390 2266

E: enquiries@matthewjamesestateagents.co.uk

www.matthewjamesestateagents.co.uk



Adelaide Road, Surbiton, KT6 4TB

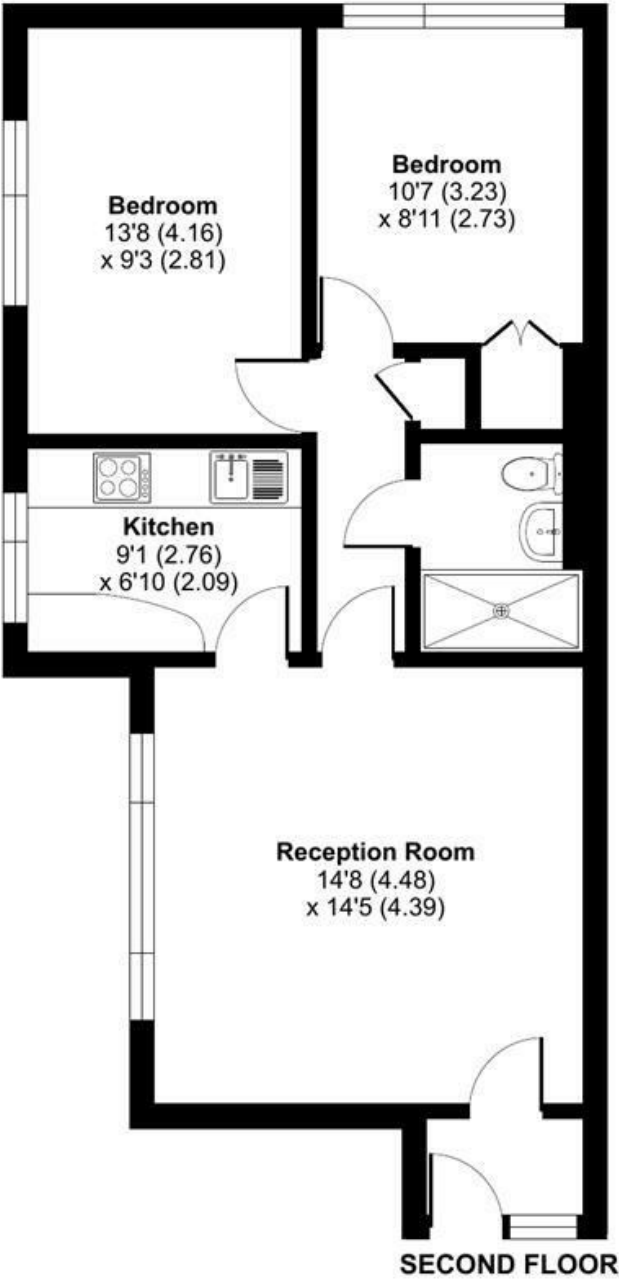
An excellent, two double bedroom, second floor lift serviced apartment with allocated parking. The property is in need of refurbishment. Located in central Surbiton, within minutes' walk of the mainline station and high street. The many benefits include a large reception room with ample sitting and dining space and a separate fitted kitchen. There is a master bedroom with fitted storage and a double second bedroom. There is also a white fitted shower room. Gas central heating. Allocated parking and a communal garden to the rear. Sold with a Share of the Freehold and a lease in excess of 900 years. Council tax band C. We are informed the service charge is £417 per qrt and there is a large reserve fund. No onward chain.

Guide Price £360,000 Leasehold - Share of Freehold

EPC Rating: D

Dulverton Court, Adelaide Road, Surbiton, KT6

Approximate Area = 630 sq ft / 58.5 sq m
For identification only - Not to scale



Floor plan produced in accordance with RICS Property Measurement 2nd Edition, Incorporating International Property Measurement Standards (IPMS2 Residential). © n°checom 2025. Produced for Matthew James. REF: 1363588

We aim to make our property details a reliable guide. However they are not guaranteed and do not form part of a contract. Information in relation to lease length, service charge and ground rent has been provided by the vendor, they are likely to be subject to reviews and increases in the future and will need to be verified by your legal representative. Please note that appliances and heating systems have not been tested and therefore no warranty can be given as to their good working order. Carpets, curtains, gas fires, electrical goods/fitings and other fixtures, unless expressly mentioned, are not included in the sale of this property. If there are any important matters which are likely to affect your decision to buy, please contact our office.

