



Matthew James

St James House | St James Road | Surbiton | Surrey KT6 4QH

T: +44 (0) 20 8390 2266

E: enquiries@matthewjamesestateagents.co.uk

www.matthewjamesestateagents.co.uk



2 Surbiton Hill Park, Surbiton, KT5 8EZ

TO LET

A well located and well presented two bedroom apartment on the top floor of this small purpose built block located only a short walk from the heart of Surbiton. The accommodation comprises; entrance hall, reception measuring 16' x 12', modern fitted kitchen, two double bedrooms and bathroom. The property benefits from Entryphone system, communal gardens and an allocated parking space, is offered unfurnished and is available in early June. Council Tax Band C

£1,650 Per Calendar Month per calendar month (other fees may apply)

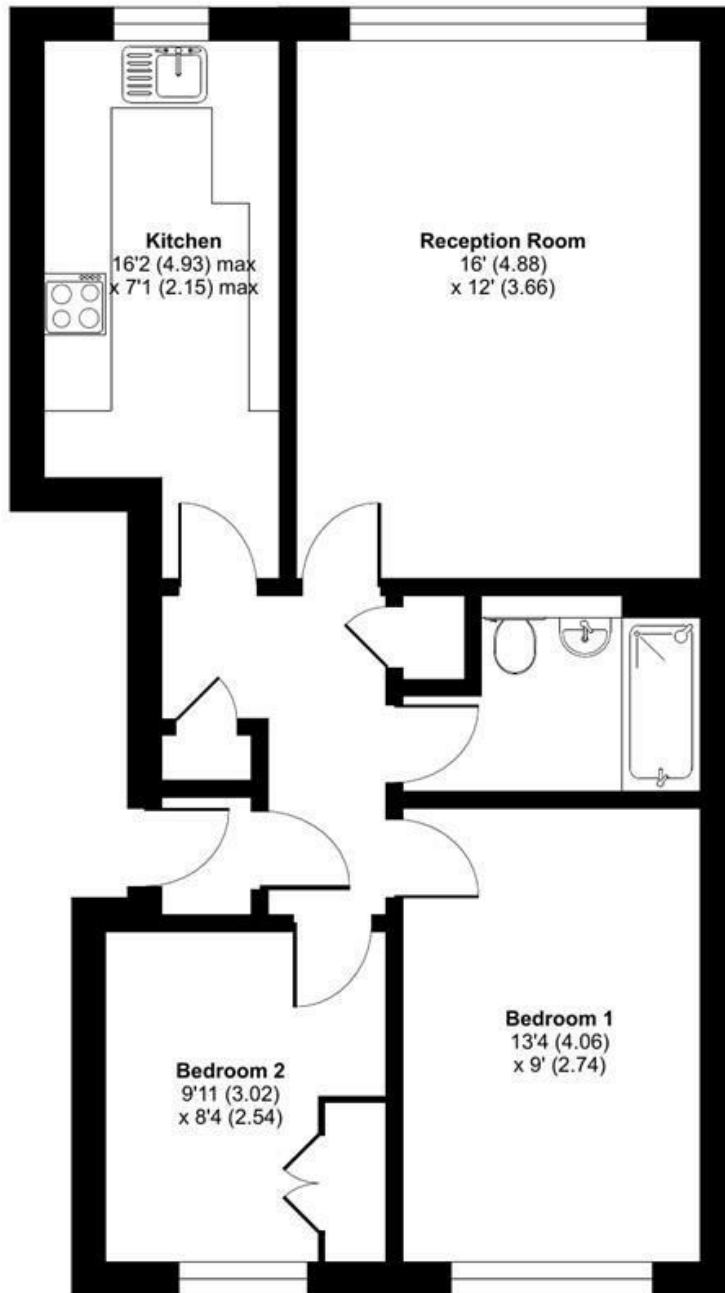
EPC Rating: D

2 Surbiton Hill Park, Surbiton, KT5 8EZ

Surbiton Hill Park, Surbiton, KT5

Approximate Area = 643 sq ft / 59.7 sq m

For identification only - Not to scale



SECOND FLOOR

Floor plan produced in accordance with RICS Property Measurement 2nd Edition, Incorporating International Property Measurement Standards (IPMS2 Residential). © nchecom 2025. Produced for Matthew James. REF: 1311795

These sales particulars have been prepared as a general guide only. We have not carried out a detailed survey, tested the services, appliances or specific fittings. Your solicitor must confirm lease or freehold details. Carpets, curtains, gas fires, electrical goods/fittings or other fixtures, unless expressly mentioned, are not included in the sale of this property. If there are any important matter which are likely to affect your decision to buy, please contact this office and we will be pleased to check the information for you before viewing the property. Before this property can be removed from the market, all offer.; must be checked by our Financial Services Department. This is a service we offer on behalf of our clients. Please note that our room sizes are quoted in metres to the nearest tenth of a meter on a wall-to-wall basis. The imperial equivalent is only intended as an approximate guide for those not fully conversant with the metric measurements. All measurements have been taken using a sonic tape measure and therefore may be subject to a small margin of error.

