



Matthew James

St James House | St James Road | Surbiton | Surrey KT6 4QH

T: +44 (0) 20 8390 2266

E: enquiries@matthewjamesestateagents.co.uk

www.matthewjamesestateagents.co.uk



## Ash Tree Close, Surbiton, KT6 5BQ

**TO LET**

A well presented two double bedroom ground floor apartment in this modern development located within easy access to Surbiton Mainline Station and High Street and offering easy links to the transport facilities of the A3. The accommodation comprises; entrance hall, reception/dining room with door to patio and communal gardens, main double bedroom, with en-suite shower room, 2nd double bedroom, family bathroom and modern fitted kitchen. The property benefits from off street parking and neutral decoration throughout, is offered unfurnished and is available immediately. Council Tax Band D

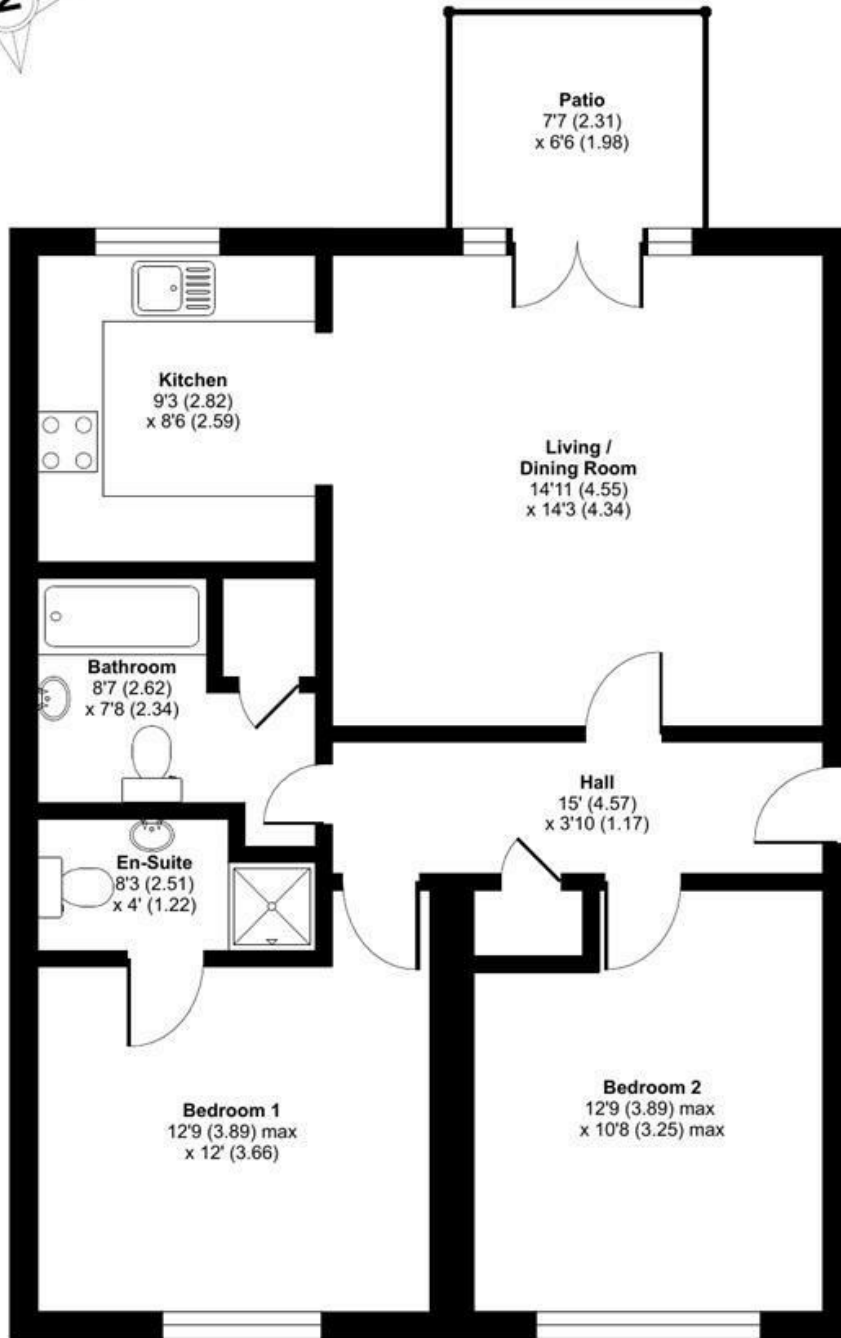
**£1,800 Per Calendar Month per calendar month (other fees may apply)**

**EPC Rating: C**

## Ash Tree Close, KT6

Approximate Area = 772 sq ft / 71.7 sq m

For identification only - Not to scale



**GROUND FLOOR**



Floor plan produced in accordance with RICS Property Measurement Standards incorporating International Property Measurement Standards (IPMS2 Residential). © nichecom 2024. Produced for Matthew James. REF: 1187802

These sales particulars have been prepared as a general guide only. We have not carried out a detailed survey, tested the services, appliances or specific fittings. Your solicitor must confirm lease or freehold details. Carpets, curtains, gas fires, electrical goods/fittings or other fixtures, unless expressly mentioned, are not included in the sale of this property. If there are any important matter which are likely to affect your decision to buy, please contact this office and we will be pleased to check the information for you before viewing the property. Before this property can be removed from the market, all offer.; must be checked by our Financial Services Department. This is a service we offer on behalf of our clients. Please note that our room sizes are quoted in metres to the nearest tenth of a meter on a wall-to-wall basis. The imperial equivalent is only intended as an approximate guide for those not fully conversant with the metric measurements. All measurements have been taken using a sonic tape measure and therefore may be subject to a small margin of error.

Energy Efficiency Rating		Current	Potential
Very energy efficient - lower running costs			
(92 plus) <b>A</b>			
(81-91) <b>B</b>			
(69-80) <b>C</b>			
(55-68) <b>D</b>			
(39-54) <b>E</b>			
(21-38) <b>F</b>			
(1-20) <b>G</b>			
Not energy efficient - higher running costs			
<b>England &amp; Wales</b>		78	78
	EU Directive 2002/91/EC		

Environmental Impact (CO <sub>2</sub> ) Rating		Current	Potential
Very environmentally friendly - lower CO <sub>2</sub> emissions			
(92 plus) <b>A</b>			
(81-91) <b>B</b>			
(69-80) <b>C</b>			
(55-68) <b>D</b>			
(39-54) <b>E</b>			
(21-38) <b>F</b>			
(1-20) <b>G</b>			
Not environmentally friendly - higher CO <sub>2</sub> emissions			
<b>England &amp; Wales</b>			
	EU Directive 2002/91/EC		