



Matthew James

St James House | St James Road | Surbiton | Surrey KT6 4QH

T: +44 (0) 20 8390 2266

E: enquiries@matthewjamesestateagents.co.uk

www.matthewjamesestateagents.co.uk



The Avenue, Surbiton, KT5 8JW

An excellent spacious first floor one bedroom conversion apartment with a communal garden set in a grand detached Victorian house. Located on a tree lined avenue within walking distance of Surbiton mainline station. The many benefits include a large living room with ample sitting and dining space and a large bay window. There is a separate contemporary fitted kitchen with integral appliances. A spacious double bedroom with fitted wardrobes and a door leading to the modern white and stone en-suite bathroom with a shower over the bath. Gas central heating and sash windows with shutters. To the rear is a large communal garden. Parking, first come first served basis at the front of the property. Sold with a lease of approx. 116 years. We are advised the current service charge is £1300pa and the ground rent £300pa.

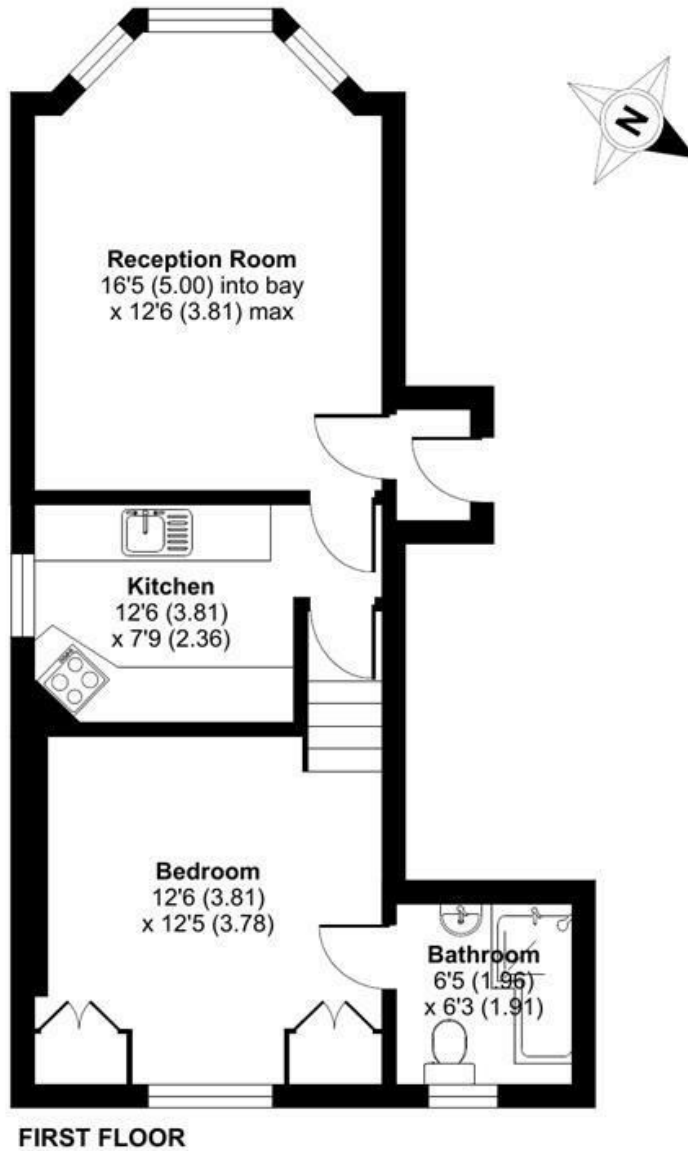
Guide Price £349,950 Leasehold

EPC Rating: C

The Avenue, Surbiton, KT5

Approximate Area = 515 sq ft / 47.8 sq m

For identification only - Not to scale



Floor plan produced in accordance with RICS Property Measurement Standards incorporating International Property Measurement Standards (IPMS2 Residential). © nichecom 2024. Produced for Matthew James. REF: 1071296

We aim to make our property details a reliable guide. However they are not guaranteed and do not form part of a contract. Information in relation to lease length, service charge and ground rent has been provided by the vendor, they are likely to be subject to reviews and increases in the future and will need to be verified by your legal representative. Please note that appliances and heating systems have not been tested and therefore no warranty can be given as to their good working order. Carpets, curtains, gas fires, electrical goods/fittings and other fixtures, unless expressly mentioned, are not included in the sale of this property. If there are any important matters which are likely to affect your decision to buy, please contact our office.

| Energy Efficiency Rating | | Current | Potential |
|---|-------------------------|---------|-----------|
| Very energy efficient - lower running costs | | | |
| (92 plus) A | | | |
| (81-91) B | | | |
| (69-80) C | | | |
| (55-68) D | | | |
| (39-54) E | | | |
| (21-38) F | | | |
| (1-20) G | | | |
| Not energy efficient - higher running costs | | | |
| England & Wales | | 75 | 75 |
| | EU Directive 2002/91/EC | | |

| Environmental Impact (CO ₂) Rating | | Current | Potential |
|---|-------------------------|---------|-----------|
| Very environmentally friendly - lower CO ₂ emissions | | | |
| (92 plus) A | | | |
| (81-91) B | | | |
| (69-80) C | | | |
| (55-68) D | | | |
| (39-54) E | | | |
| (21-38) F | | | |
| (1-20) G | | | |
| Not environmentally friendly - higher CO ₂ emissions | | | |
| England & Wales | | | |
| | EU Directive 2002/91/EC | | |