



Matthew James

St James House | St James Road | Surbiton | Surrey KT6 4QH

T: +44 (0) 20 8390 2266

E: enquiries@matthewjamesestateagents.co.uk

www.matthewjamesestateagents.co.uk



Tolworth Road, Surbiton, KT6 7TA

On outstanding two double bedroom semi-detached period house with a large private garden. Located within easy reach of Surbiton mainline station and high street, with local shops and amenities within walking distance. The many benefits include a front sitting room with a bay window and a period fireplace. A dining room to the rear with a French door opening onto the garden and a modern fitted kitchen with integral appliances. On the first floor, there is a large main bedroom with a fitted wardrobe, plus a double second bedroom. There is also a white fitted bathroom suite with a separate shower. Double glazing and gas central heating. The rear garden stretches back approx. 120ft and includes a large storage shed. A lovely home.

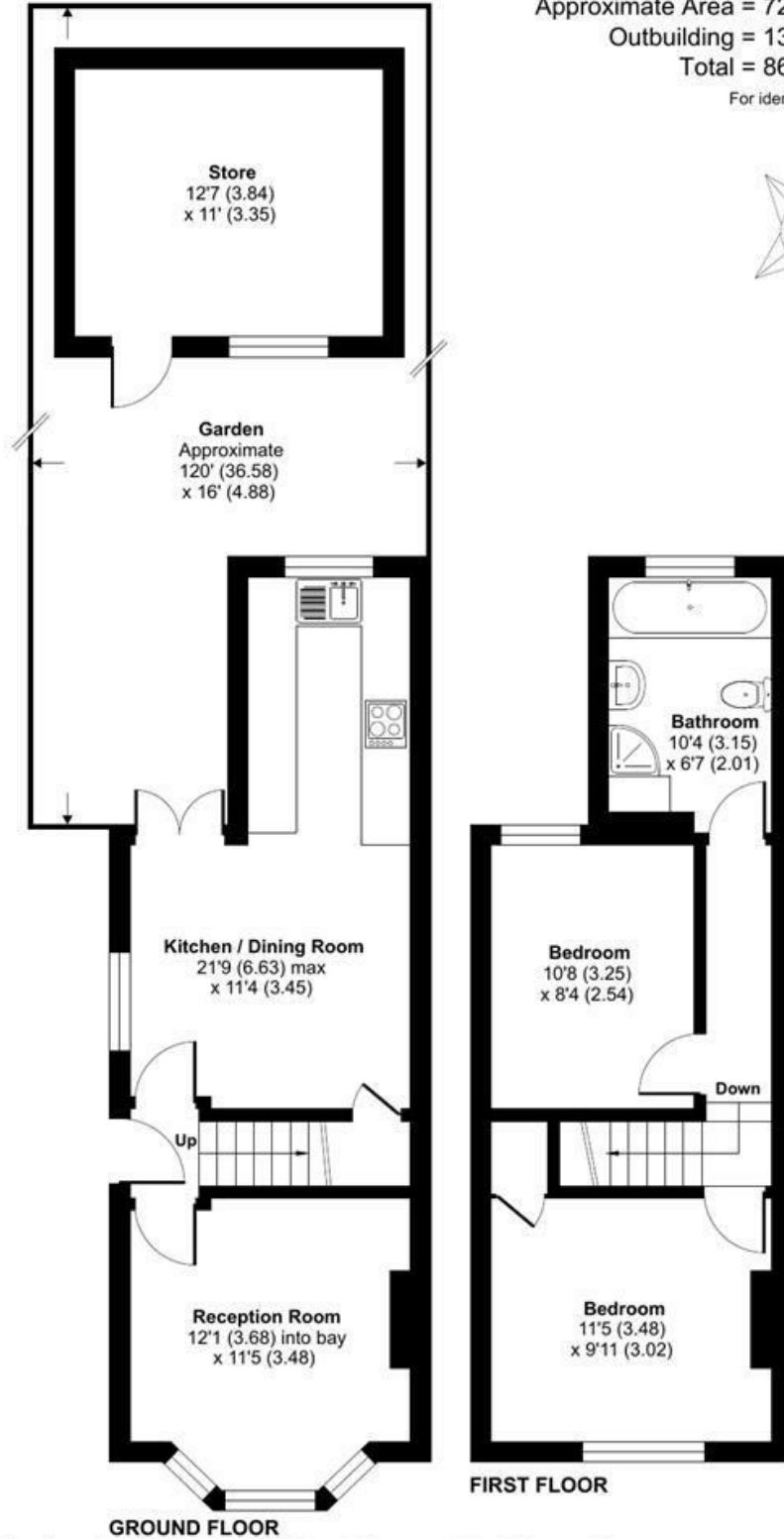
Guide Price £579,950 Freehold

EPC Rating: D

Tolworth Road, Surbiton, KT6

Approximate Area = 726 sq ft / 67.4 sq m
 Outbuilding = 139 sq ft / 12.9 sq m
 Total = 865 sq ft / 80.3 sq m

For identification only - Not to scale



Floor plan produced in accordance with RICS Property Measurement Standards incorporating International Property Measurement Standards (IPMS2 Residential). © nichecom 2024. Produced for Matthew James. REF: 1064127

We aim to make our property details a reliable guide. However they are not guaranteed and do not form part of a contract. Information in relation to lease length, service charge and ground rent has been provided by the vendor, they are likely to be subject to reviews and increases in the future and will need to be verified by your legal representative. Please note that appliances and heating systems have not been tested and therefore no warranty can be given as to their good working order. Carpets, curtains, gas fires, electrical goods/fittings and other fixtures, unless expressly mentioned, are not included in the sale of this property. If there are any important matters which are likely to affect your decision to buy, please contact our office.

| Energy Efficiency Rating | | Current | Potential |
|---|--|-------------------------|-----------|
| Very energy efficient - lower running costs | | | |
| (92 plus) A | | | |
| (81-91) B | | | |
| (69-80) C | | | |
| (55-68) D | | | |
| (39-54) E | | | |
| (21-38) F | | | |
| (1-20) G | | | |
| Not energy efficient - higher running costs | | | |
| | | 55 | 83 |
| England & Wales | | EU Directive 2002/91/EC | |

| Environmental Impact (CO ₂) Rating | | Current | Potential |
|---|--|-------------------------|-----------|
| Very environmentally friendly - lower CO ₂ emissions | | | |
| (92 plus) A | | | |
| (81-91) B | | | |
| (69-80) C | | | |
| (55-68) D | | | |
| (39-54) E | | | |
| (21-38) F | | | |
| (1-20) G | | | |
| Not environmentally friendly - higher CO ₂ emissions | | | |
| England & Wales | | EU Directive 2002/91/EC | |