



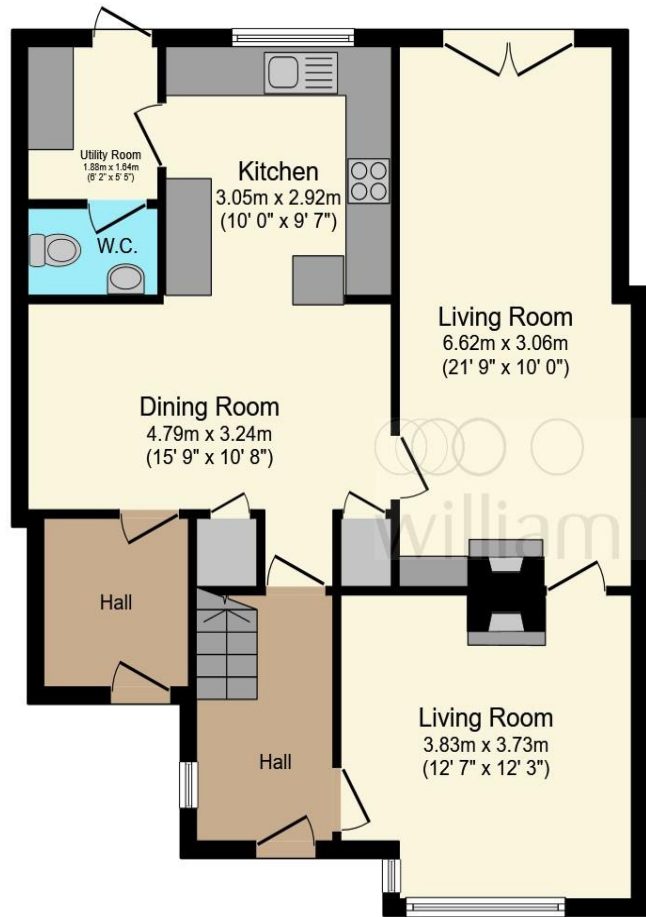
**Ditchfield Road, Hoddesdon EN11 9HU**

**welcome to**

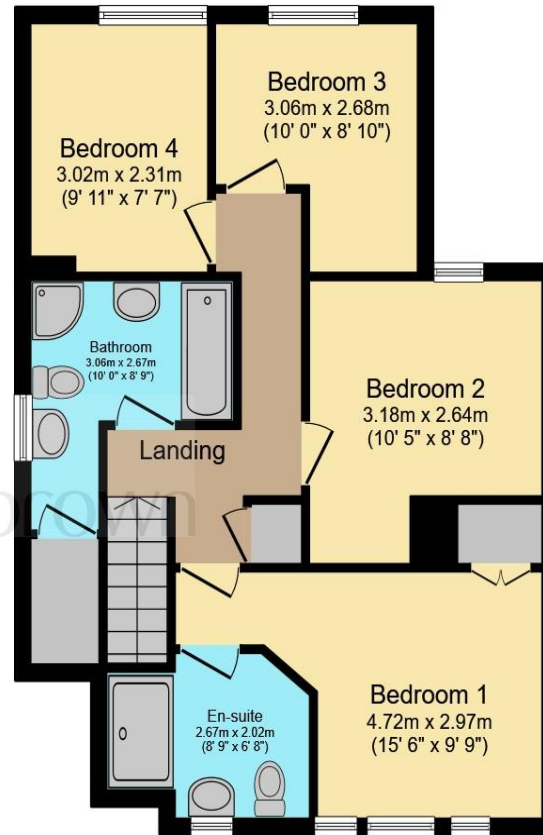
**Ditchfield Road, Hoddesdon**

WILLIAM H BROWN are delighted to offer for sale this four bedroom SEMI DETACHED family residence which benefits from many features to include GROUND FLOOR CLOAKROOM, TWO BATHROOMS, PRIVATE REAR GARDEN and OFF-STREET PARKING. An internal viewing is recommended.





**Ground Floor**



**First Floor**

Total floor area 132.3 m<sup>2</sup> (1,424 sq.ft.) approx

This floor plan is for illustrative purposes only. It is not drawn to scale. Any measurements, floor areas (including any total floor area), openings and orientation are approximate. No details are guaranteed, they cannot be relied upon for any purpose and they do not form part of any agreement. No liability is taken for any error, omission or misstatement. A party must rely upon its own inspection(s). Powered by [www.focalagent.com](http://www.focalagent.com)

- Accommodation Comprises**
- Entrance Porch**  
6' 8" x 6' 2" ( 2.03m x 1.88m )
- Entrance Hall**
- Downstairs Cloakroom**  
5' 4" x 3' 4" ( 1.63m x 1.02m )
- Lounge**  
12' 6" max x 12' 1" max ( 3.81m max x 3.68m max )
- Dining Room / Play Room**  
21' 8" max x 9' 10" max ( 6.60m max x 3.00m max )
- Kitchen / Breakfast Room**  
21' 7" max x 15' 7" max ( 6.58m max x 4.75m max )
- Utility Room**  
6' 1" x 5' 4" ( 1.85m x 1.63m )
- First Floor Landing**
- Bedroom 1**  
15' 5" max x 10' max ( 4.70m max x 3.05m max )
- En Suite Shower Room**  
8' 1" x 4' 8" ( 2.46m x 1.42m )
- Bedroom 2**  
10' 4" x 8' 7" ( 3.15m x 2.62m )
- Bedroom 3**  
10' max x 8' 8" max ( 3.05m max x 2.64m max )
- Bedroom 4**  
10' 5" max x 7' 5" max ( 3.17m max x 2.26m max )
- Family Bathroom**  
10' max x 8' 9" max ( 3.05m max x 2.67m max )
- Exterior**
- Rear Garden**
- Front Garden**

welcome to

## Ditchfield Road, Hoddesdon

- Spacious Four Bedroom Semi Detached House
- Utility Room & Ground Floor Cloakroom
- Family Bathroom & En Suite
- Private Rear Garden
- Off Street Parking

Tenure: Freehold EPC Rating: C

offers in excess of

**£465,000**



Please note the marker reflects the postcode not the actual property

**view this property online** [williamhbrown.co.uk/Property/HSD111486](http://williamhbrown.co.uk/Property/HSD111486)



Property Ref:  
HSD111486 - 0004

1. MONEY LAUNDERING REGULATIONS Intending purchasers will be asked to produce identification documentation at a later stage and we would ask for your co-operation in order that there is no delay in agreeing the sale. 2. These particulars do not constitute part or all of an offer or contract. 3. The measurements indicated are supplied for guidance only and as such must be considered incorrect. Potential buyers are advised to recheck measurements before committing to any expense. 4. We have not tested any apparatus, equipment, fixtures or services and it is in the buyers interest to check the working condition of any appliances. 5. Where an EPC, or a Home Report (Scotland only) is held for this property, it is available for inspection at the branch by appointment. If you require a printed version of a Home Report, you will need to pay a reasonable production charge reflecting printing and other costs. 6. We are not able to offer an opinion either written or verbal on the content of these reports and this must be obtained from your legal representative. 7. Whilst we take care in preparing these reports, a buyer should ensure that his/her legal representative confirms as soon as possible all matters relating to title including the extent and boundaries of the property and other important matters before exchange of contracts.

William H Brown is a trading name of Sequence (UK) Limited which is registered in England and Wales under company number 4268443, Registered Office is Cumbria House, 16-20 Hockliffe Street, Leighton Buzzard, Bedfordshire, LU7 1GN. VAT Registration Number is 500 2481 05.



william h brown



**01992 464001**



[Hoddesdon@williamhbrown.co.uk](mailto:Hoddesdon@williamhbrown.co.uk)



41 High Street, HODDESDON, Hertfordshire,  
EN11 8TD



[williamhbrown.co.uk](http://williamhbrown.co.uk)