



Longwood Road, Hertford, SG14 2JN

Welcome to Longwood Road, Hertford

A well-presented, larger than average three-bedroom split-level maisonette, arranged over the ground and first floors, offering bright and spacious accommodation throughout. The property features a modern fitted kitchen with a range of built-in appliances, and a generous rear living/dining room with direct access to its own private ground-floor balcony, which in turn leads directly onto well-maintained communal gardens-ideal for relaxing or entertaining. On the first floor are three well-proportioned bedrooms and a contemporary family bathroom, all finished to a good standard. Ideally situated for local shops, schools, Hertford town centre and the popular Panshanger Park. Further benefits include double glazing, gas central heating, allocated parking to the front of the property and a long lease.



-Accommodation Overview-

Entrance Hall:

Stairs to first floor, under stairs storage cupboard, radiator.

Lounge:

14' 6" max x 14' 5" max (4.42m max x 4.39m max)
Double glazed sliding patio doors leading to private balcony overlooking communal gardens, radiator.

Kitchen:

Fitted wall and floor units with work surface over, single bowl single drainer sink unit with mixer tap over, electric hob with oven beneath and stainless-steel extractor canopy over, space for washing machine, space for fridge freezer, tiled walls, laminate flooring, double glazed window to front aspect.

-First Floor Landing-

Two storage cupboards, door to all rooms and bathroom.

Bedroom One:

14' 4" x 8' 2" (4.37m x 2.49m)
Double glazed window to rear aspect, radiator.

Bedroom Two:

12' 9" excluding wardrobe x 8' 2" (3.89m excluding wardrobe x 2.49m)
Double glazed window to front aspect, fitted wardrobes, radiator.

Bedroom Three:

10' 8" max x 6' max (3.25m max x 1.83m max)
Double glazed window to rear aspect, radiator.

Bathroom:

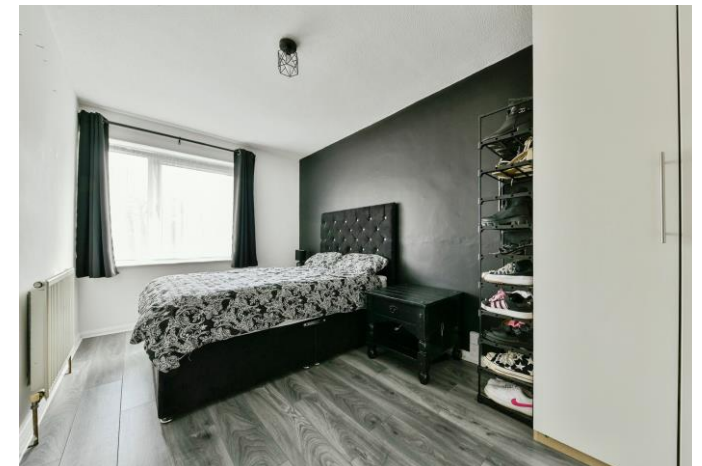
Three-piece suite comprising of panel enclosed bath with shower over, pedestal wash hand basin, WC, obscure double-glazed window to front aspect.

-Exterior-

Parking:

Allocated parking space.

Communal Gardens



view this property online williamhbrown.co.uk/Property/HFD108129

Welcome to

Longwood Road, Hertford

- Ground Floor Split Level Maisonette
- Fitted Kitchen
- Three Bedrooms
- Private Balcony Overlooking Communal Gardens
- Allocated Parking Space

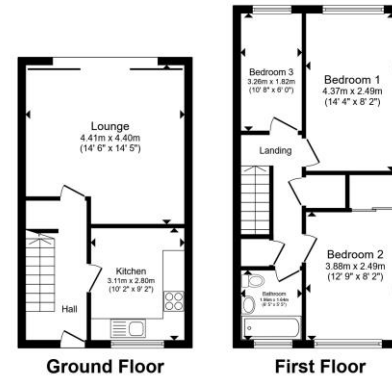
Tenure: Leasehold EPC Rating: C

Council Tax Band: B

Service Charge: £2,049.96 Yearly

Ground Rent: 0

This is a Leasehold property with details as follows; Term of Lease 999 years from 22 Oct 1999. Should you require further information please contact the branch. Please Note additional fees could be incurred for items such as Leasehold packs.



Total floor area 73.3 m² (789 sq.ft.) approx.
This floor plan is for illustrative purposes only. It is not drawn to scale. Any measurements, floor areas (including any total floor area), openings and orientation are approximate. No details are guaranteed, they cannot be relied upon for any purpose and they do not form part of any agreement. No liability is taken for any error, omission or misstatement. A party must rely upon its own inspection(s). Powered by www.propertybox.io

william
h brown

£265,000



Please note the marker reflects the postcode not the actual property

view this property online [williamhbrown.co.uk/Property/HFD108129](https://www.williamhbrown.co.uk/Property/HFD108129)



Property Ref:
HFD108129 - 0002

1. MONEY LAUNDERING REGULATIONS Intending purchasers will be asked to produce identification documentation at a later stage and we would ask for your co-operation in order that there is no delay in agreeing the sale. 2. These particulars do not constitute part or all of an offer or contract. 3. The measurements indicated are supplied for guidance only and as such must be considered incorrect. Potential buyers are advised to recheck measurements before committing to any expense. 4. We have not tested any apparatus, equipment, fixtures or services and it is in the buyer's interest to check the working condition of any appliances. 5. Where an EPC, or a Home Report (Scotland only) is held for this property, it is available for inspection at the branch by appointment. If you require a printed version of a Home Report, you will need to pay a reasonable production charge reflecting printing and other costs. 6. We are not able to offer an opinion either written or verbal on the content of these reports and this must be obtained from your legal representative. 7. Whilst we take care in preparing these reports, a buyer should ensure that his/her legal representative confirms as soon as possible all matters relating to title including the extent and boundaries of the property and other important matters before exchange of contracts.

William H Brown is a trading name of Sequence (UK) Limited which is registered in England and Wales under company number 4268443, Registered Office is Cumbria House, 16-20 Hockliffe Street, Leighton Buzzard, Bedfordshire, LU7 1GN. VAT Registration Number is 500 2481 05.



william h brown



01992 586501



Hertford@williamhbrown.co.uk



21 Castle Street, HERTFORD, Hertfordshire,
SG14 1ER



[williamhbrown.co.uk](https://www.williamhbrown.co.uk)