



Barleycroft, Waterford, HERTFORD, SG14 2QB

Welcome to

Barleycroft, Waterford, HERTFORD

A beautifully presented and particularly spacious two double bedroom first-floor (top floor) apartment, offering bright and comfortable living throughout. The property features a generous, larger-than-average reception room with double-glazed sliding doors opening onto a charming Juliette balcony.



-Accommodation Overview-

Entrance Hall:

Two storage cupboards, airing cupboard, electric heater.

Lounge / Diner:

16' 7" max x 10' 7" max (5.05m max x 3.23m max)
Sliding doors leading to Juliette balcony, feature fireplace, laminate flooring, electric heater.

Kitchen:

8' 9" x 8' 9" (2.67m x 2.67m)
Fitted wall and floor units with work surface over, sink unit with mixer tap over, electric hob with oven beneath and extractor canopy over, plumbing and space for washing machine, space for fridge freezer, breakfast bar, double glazed window to front aspect.

Bedroom One:

12' 5" x 11' 2" (3.78m x 3.40m)
Double glazed window to rear aspect, carpet, electric heater.

Bedroom Two:

11' 2" in recess x 8' 9" (3.40m in recess x 2.67m)
Double glazed window to front aspect, carpet, electric heater.

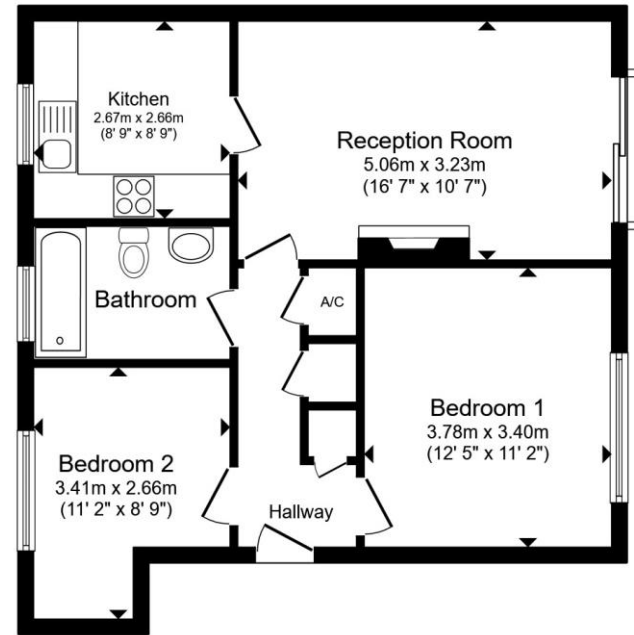
Bathroom:

Three-piece suite comprising of panel enclosed bath with shower over, pedestal wash hand basin, WC, tiled walls, tiled flooring, chrome heated towel rail, obscure double-glazed window.

-Exterior-

Outside Space:

Decking area, pots and plants.



Total floor area 56.9 m² (613 sq.ft.) approx

This floor plan is for illustrative purposes only. It is not drawn to scale. Any measurements, floor areas (including any total floor area), openings and orientation are approximate. No details are guaranteed, they cannot be relied upon for any purpose and they do not form part of any agreement. No liability is taken for any error, omission or misstatement. A party must rely upon its own inspection(s). Powered by www.propertybox.io


william
h brown



check out more properties at williamhbrown.co.uk



Welcome to Barleycroft, Waterford

HERTFORD

- Well Presented Two Double Bedroom Apartment
- Outside Space
- Sought After Village Location
- Fitted Kitchen & Bathroom
- Lounge With Juliette Balcony
- Un-Allocated Residents Parking

Tenure: Leasehold

EPC Rating: D

Council Tax Band: C

Service Charge: £1,100.00 Yearly

Ground Rent: £10.00 Yearly

This is a Leasehold property with details as follows; Term of Lease 125 years from 23 Jul 1984. Should you require further information please contact the branch. Please Note additional fees could be incurred for items such as Leasehold packs.

£270,000



Please note the marker reflects the postcode not the actual property

check out more properties at williamhbrown.co.uk



Property Ref:
HFD108047 - 0002

1. MONEY LAUNDERING REGULATIONS Intending purchasers will be asked to produce identification documentation at a later stage and we would ask for your co-operation in order that there is no delay in agreeing the sale. 2. These particulars do not constitute part or all of an offer or contract. 3. The measurements indicated are supplied for guidance only and as such must be considered incorrect. Potential buyers are advised to recheck measurements before committing to any expense. 4. We have not tested any apparatus, equipment, fixtures or services and it is in the buyers interest to check the working condition of any appliances. 5. Where an EPC, or a Home Report (Scotland only) is held for this property, it is available for inspection at the branch by appointment. If you require a printed version of a Home Report, you will need to pay a reasonable production charge reflecting printing and other costs. 6. We are not able to offer an opinion either written or verbal on the content of these reports and this must be obtained from your legal representative. 7. Whilst we take care in preparing these reports, a buyer should ensure that his/her legal representative confirms as soon as possible all matters relating to title including the extent and boundaries of the property and other important matters before exchange of contracts.

William H Brown is a trading name of Sequence (UK) Limited which is registered in England and Wales under company number 4268443, Registered Office is Cumbria House, 16-20 Hockliffe Street, Leighton Buzzard, Bedfordshire, LU7 1GN. VAT Registration Number is 500 2481 05.



william h brown



01992 586501



Hertford@williamhbrown.co.uk



21 Castle Street, HERTFORD, Hertfordshire,
SG14 1ER



williamhbrown.co.uk