



Long Meadow, Watton At Stone, Hertford, SG14 3YP

Welcome to Long Meadow, Watton At Stone, Hertford

This charming three-bedroom terraced family home is situated in the highly sought-after village of Watton at Stone. Well-proportioned throughout, the property boasts a spacious and modern kitchen with built-in appliances, providing ample room for cooking and dining. The ground floor also features a convenient downstairs cloakroom and a bright rear reception room that opens directly onto a private and secluded courtyard garden - perfect for relaxing or entertaining. The garden also benefits from an outdoor storage cupboard and rear access leading to allocated parking for two vehicles, one of which is sheltered under a carport. Upstairs, there are three well-sized bedrooms, including a master bedroom with built-in wardrobes and an en-suite shower room. A modern family bathroom serves the remaining bedrooms. Additional features include double glazing, central heating, and a prime location for Watton at Stone railway station, local schools, shops and parks - making this an ideal family home in a desirable village setting



Accommodation Overview-

Entrance Hall:

Stairs to first floor, storage cupboard underneath, door to downstairs cloakroom, laminate flooring.

Downstairs Cloakroom:

Obscure double-glazed window to front aspect, WC, wash hand basin.

Kitchen / Diner:

14' 1" x 9' 3" (4.29m x 2.82m)

Fitted wall and floor units with work surface over, sink unit with mixer tap over, gas hob with extractor canopy over and oven beneath, integrated fridge freezer, space for washing machine, double glazed window to front aspect, spot lighting, radiator.

Lounge:

16' 10" max x 14' 7" max (5.13m max x 4.45m max)

Double glazed patio doors leading to the rear garden, laminate flooring, radiator, power points, electric fireplace, double glazed window to rear aspect,

-First Floor Landing-

Storage cupboard.

Bedroom One:

12' 7" x 11' excluding wardrobes (3.84m x 3.35m excluding wardrobes)

Double glazed window to rear aspect, two built in wardrobes, carpet, door leading to en-suite shower room, radiator.

En-Suite Shower Room:

Shower cubicle with wall mounted shower over and tiled walls, wash hand basin with storage cupboard beneath, wall mounted mirror, WC.

Bedroom Two:

13' 2" x 9' 6" (4.01m x 2.90m)

Double glazed window to front aspect, carpet, radiator.

Bedroom Three:

6' 4" x 7' 3" (1.93m x 2.21m)

Double glazed window to front aspect, carpet, radiator.

Bathroom:

Three-piece suite comprising of panel enclosed bath with wall mounted shower attachment over and mixer tap, WC, wash hand basin with built in storage cupboards beneath, partly tiled walls, wall mounted mirror.

-Exterior-

Rear Garden:

Courtyard style garden with shrubs and beds, outside cupboard, side access.

Car-Port

Car-Port - Space for two cars.

Agent Note:

£40 Per month management charge. Please ask agent for more details.



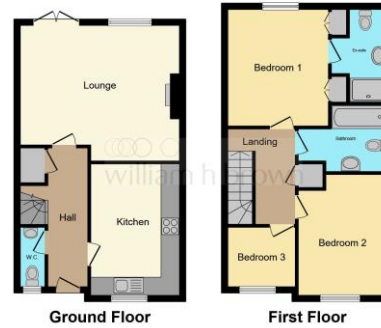
check out more properties at williamhbrown.co.uk

Welcome to

Long Meadow, Watton At Stone Hertford

- Immaculately Presented Throughout
- En-Suite Shower Room & Family Bathroom
- Well Maintained Courtyard Style Rear Garden
- Sought After Village Location SG14
- Fitted Kitchen
- Secure Gated Entrance
- Car-Port For Two Cars

Tenure: Freehold EPC Rating: C



This floor plan is for illustrative purposes only. It is not drawn to scale. Any measurements, floor areas (including any total floor area), openings and orientation are approximate. No details are guaranteed, they cannot be relied upon for any purpose and they do not form part of any agreement. No liability is taken for any error, omission or misstatement. A party must rely upon its own inspection(s). Powered by www.flooragent.com



£500,000



Please note the marker reflects the postcode not the actual property

check out more properties at williamhbrown.co.uk



Property Ref:
HFD107771 - 0002

1. MONEY LAUNDERING REGULATIONS Intending purchasers will be asked to produce identification documentation at a later stage and we would ask for your co-operation in order that there is no delay in agreeing the sale. 2. These particulars do not constitute part or all of an offer or contract. 3. The measurements indicated are supplied for guidance only and as such must be considered incorrect. Potential buyers are advised to recheck measurements before committing to any expense. 4. We have not tested any apparatus, equipment, fixtures or services and it is in the buyers interest to check the working condition of any appliances. 5. Where an EPC, or a Home Report (Scotland only) is held for this property, it is available for inspection at the branch by appointment. If you require a printed version of a Home Report, you will need to pay a reasonable production charge reflecting printing and other costs. 6. We are not able to offer an opinion either written or verbal on the content of these reports and this must be obtained from your legal representative. 7. Whilst we take care in preparing these reports, a buyer should ensure that his/her legal representative confirms as soon as possible all matters relating to title including the extent and boundaries of the property and other important matters before exchange of contracts.

William H Brown is a trading name of Sequence (UK) Limited which is registered in England and Wales under company number 4268443, Registered Office is Cumbria House, 16-20 Hockliffe Street, Leighton Buzzard, Bedfordshire, LU7 1GN. VAT Registration Number is 500 2481 05.

william h brown



01992 586501



Hertford@williamhbrown.co.uk



21 Castle Street, HERTFORD, Hertfordshire,
SG14 1ER



williamhbrown.co.uk