



Newgate Street Village, Hertford, SG13 8RA

Welcome to Newgate Street Village, Hertford

This exquisite four-bedroom, three-bathroom detached family home providing a bright and spacious living experience. Nestled in the sought-after village of Newgate Street, the property features a gated driveway for multiple cars, ensuring both security and convenience. The substantial rear garden offers stunning countryside views, creating a serene and picturesque setting. The master bedroom, with an en suite and balcony, adds a touch of luxury, while the large open-plan kitchen, dining, and living area is an ideal space for entertaining guests. A downstairs cloakroom and a separate front reception room with bay windows enhance the functional and aesthetic aspects of the home.



-Accommodation Overview-

Entrance Hall:

Stairs to first floor, doors leading to lounge, kitchen and garage.

Lounge:

17' 5" x 13' 5" (5.31m x 4.09m)

Double glazed large bay window to front aspect, feature fireplace, carpet, radiator, French doors leading to hallway.

Kitchen:

20' 6" x 11' 5" (6.25m x 3.48m)

Fitted wall and floor units with work surface over, one and half bowl stainless steel sink unit with mixer tap over, space for American fridge freezer, space for range cooker with stainless steel extractor canopy over, opens to extension.

Living /Dining Room:

31' 3" x 9' 10" (9.53m x 3.00m)

Two double glazed patio doors leading to the rear garden, side door, radiator.

Downstairs Cloakroom:

Wash hands basin, WC.

-First Floor Landing-

Double glazed window to side aspect.

Bedroom One:

12' 11" x 12' 2" (3.94m x 3.71m)

Double glazed patio doors leading to a private balcony with beautiful views across Hertford countryside, radiator, carpet, door leading to en-suite bathroom.

Private Terrace

Large private terrace.

En-Suite Bathroom:

Three piece suite comprising of tiled enclosed bath with mixer tap over, wash hand basin with mixer tap, WC, obscure double glazed window to front aspect, tiled walls, tiled floor, chrome heated towel rail.

Bedroom Two:

17' 4" x 10' 11" (5.28m x 3.33m)

Double glazed window to front aspect, fitted wardrobes, carpet, radiator.

Bedroom Three:

Double glazed window to rear aspect, radiator, carpeted.

Bedroom Four:

7' 6" x 6' 9" (2.29m x 2.06m)

Double glazed window to rear aspect, carpeted, radiator.

Shower Room:

Shower cubicle with Rainfall shower and additional shower heated, wash hand basin with mixer tap over, WC, tiled walls, wall mounted mirror.

-Exterior-

Rear Garden:

A substantial rear garden with patio area filled with pots and shrubs looking over a well maintained lawn with lovely views across the countryside. The garden is filled with an array of shrubs, plants and trees.

Driveway:

Gated driveway for multiple cars.

Integrated Garage

20' 1" x 9' 7" (6.12m x 2.92m)



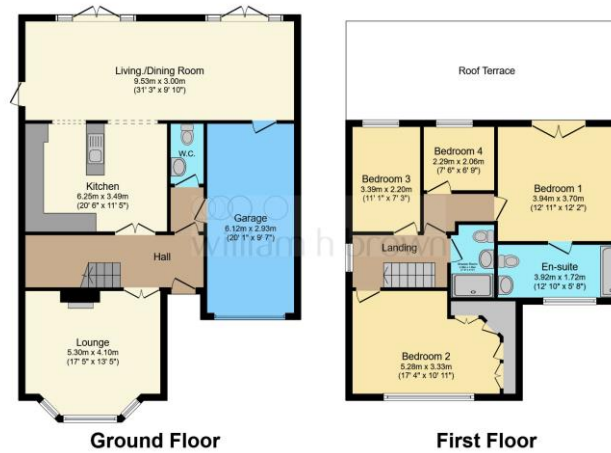
Welcome to Newgate Street Village

- Four Bedroom Detached House
- ***OFFERED CHAIN FREE***
- Scope For Further Extension (STPP)
- Close To Popular Schools
- Substantial Rear Garden
- Gated Driveway For Multiple Cars
- Stunning Countryside Views
- Beautifully Presented Master Bedroom With Balcony & En-Suite

Tenure: Freehold EPC Rating: D

Guide Price

£890,000



Total floor area 158.1 m² (1,702 sq.ft.) approx

This floorplan is for illustrative purposes only and is not drawn to scale. Measurements, floor-areas, openings and orientations are approximate. They should not be relied upon for any purpose and do not form any part of an agreement. No liability is taken for any error or mis-statement. All parties must rely on their own inspections.



Please note the marker reflects the postcode not the actual property



check out more properties at williamhbrown.co.uk

1. MONEY LAUNDERING REGULATIONS Intending purchasers will be asked to produce identification documentation at a later stage and we would ask for your co-operation in order that there is no delay in agreeing the sale. 2. These particulars do not constitute part or all of an offer or contract. 3. The measurements indicated are supplied for guidance only and as such must be considered incorrect. Potential buyers are advised to recheck measurements before committing to any expense. 4. We have not tested any apparatus, equipment, fixtures or services and it is in the buyer's interest to check the working condition of any appliances. 5. Where an EPC, or a Home Report (Scotland only) is held for this property, it is available for inspection at the branch by appointment. If you require a printed version of a Home Report, you will need to pay a reasonable production charge reflecting printing and other costs. 6. We are not able to offer an opinion either written or verbal on the content of these reports and this must be obtained from your legal representative. 7. Whilst we take care in preparing these reports, a buyer should ensure that his/her legal representative confirms as soon as possible all matters relating to title including the extent and boundaries of the property and other important matters before exchange of contracts.



Property Ref:
HFD107230 - 0004

William H Brown is a trading name of Sequence (UK) Limited which is registered in England and Wales under company number 4268443, Registered Office is Cumbria House, 16-20 Hockliffe Street, Leighton Buzzard, Bedfordshire, LU7 1GN. VAT Registration Number is 500 2481 05.

 william h brown



01992 586501



Hertford@williamhbrown.co.uk



21 Castle Street, HERTFORD, Hertfordshire,
SG14 1ER



williamhbrown.co.uk