



Norwood Grove, Harrogate HG3 2XL

welcome to

Norwood Grove, Harrogate

This extended three-bedroom semi-detached home offers spacious living, a modern kitchen, and a private office/utility room. With a charming garden, parking for two, and located near Harrogate town centre, it's ideal for comfortable family living. Close to all local amenities!



Norwood Grove

This beautifully extended, three-bedroom semi-detached home offers a delightful garden and private parking. Located in a highly sought-after area near Harrogate town centre, the property enjoys excellent access to local amenities. Inside, the house boasts spacious and adaptable living areas, including a cozy lounge, a modern kitchen with dining space, and a ground-floor office/utility room. The upper floor features three generously sized bedrooms, an extended dressing room, and a family bathroom. Outside, a driveway accommodates two cars, while a charming rear garden adds to the appeal. Set in a prime location, the property benefits from nearby amenities and is just a short journey from Harrogate town centre.

Entrance Hall

The front entry door opens into the entrance hall which has a staircase rising to the first floor landing.

Living Room

12' 4" x 13' 8" (3.76m x 4.17m)

Having a useful understairs storage cupboard and a radiator. Double glazed window to the front elevation.

Kitchen Diner

15' 6" x 9' 5" (4.72m x 2.87m)

Fitted with a range of wall and base units with complimentary quartz work surfaces which incorporate a stainless steel sink with mixer tap. Cooker point and space for fridge freezer. Breakfast bar seating area. Double glazed window to the rear elevation and patio doors open out to the rear garden.

Utility Room

7' 9" x 8' 10" (2.36m x 2.69m)

This room provides potential for a workspace or potential utility room with a double glazed window to the rear elevation and plumbing for utilities.

First Floor Landing

Stairs rise from the entrance hall up to the first floor landing, which has a storage cupboard and access to the loft which is part boarded.

Bedroom One

9' 4" x 12' 10" (2.84m x 3.91m)

A double bedroom with a radiator and double glazed window to the front elevation.

Bedroom Two

10' 4" x 9' 4" (3.15m x 2.84m)

A second double bedroom which has a radiator and double glazed window to the rear elevation. This bedroom also benefits from having an adjoining room with a double glazed window, which could be used as a study, dressing room or converted into an en-suite.

Bedroom Three

8' 5" x 5' 10" (2.57m x 1.78m)

Having a radiator and double glazed window to the front elevation.

Bathroom

Fitted with a three piece suite comprising; panelled bath with shower over and screen to the side, pedestal wash hand basin and low flush wc. Chrome ladder style radiator, extractor fan and double glazed window to the rear elevation.

Externally

A driveway provides off street parking for two vehicles to the rear, plus an attractive garden with lawn, patio and timber garden shed.



view this property online williamhbrown.co.uk/Property/HRG106822



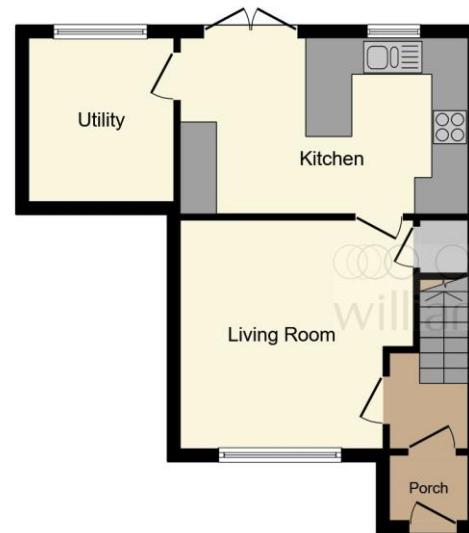
welcome to

Norwood Grove, Harrogate

- Extended Semi-Detached House
- Three Bedrooms
- Front & Rear Gardens
- Off Street Parking
- Highly Sought After Location

Tenure: Freehold EPC Rating: D

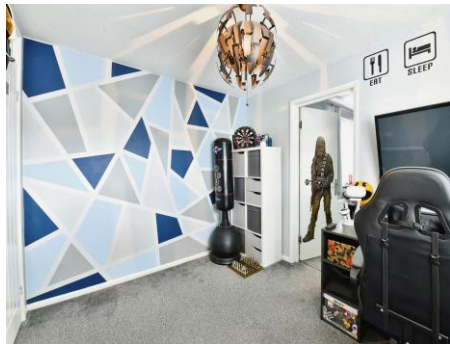
£275,000



Ground Floor



First Floor



Please note the marker reflects the postcode not the actual property

view this property online williambrown.co.uk/Property/HRG106822



Property Ref:
HRG106822 - 0002

1. MONEY LAUNDERING REGULATIONS Intending purchasers will be asked to produce identification documentation at a later stage and we would ask for your co-operation in order that there is no delay in agreeing the sale. 2. These particulars do not constitute part or all of an offer or contract. 3. The measurements indicated are supplied for guidance only and as such must be considered incorrect. Potential buyers are advised to recheck measurements before committing to any expense. 4. We have not tested any apparatus, equipment, fixtures or services and it is in the buyers interest to check the working condition of any appliances. 5. Where an EPC, or a Home Report (Scotland only) is held for this property, it is available for inspection at the branch by appointment. If you require a printed version of a Home Report, you will need to pay a reasonable production charge reflecting printing and other costs. 6. We are not able to offer an opinion either written or verbal on the content of these reports and this must be obtained from your legal representative. 7. Whilst we take care in preparing these reports, a buyer should ensure that his/her legal representative confirms as soon as possible all matters relating to title including the extent and boundaries of the property and other important matters before exchange of contracts.

William H Brown is a trading name of Sequence (UK) Limited which is registered in England and Wales under company number 4268443, Registered Office is Cumbria House, 16-20 Hockliffe Street, Leighton Buzzard, Bedfordshire, LU7 1GN. VAT Registration Number is 500 2481 05.



william h brown



01423 502282



harrogate@williambrown.co.uk



4 Albert Street, HARROGATE, North Yorkshire,
HG1 1JL



williambrown.co.uk