

Bracklesham Close, Southampton SO19 8TD

welcome to

Bracklesham Close, Southampton

* ONE BEDROOM TERRACED HOUSE * OPEN PLAN KITCHEN/LIVING AREA * SHOWER ROOM * LOW MAINTENANCE GARDEN * ONE ALLOCATED PARKING SPACE * GREAT LOCATION * NO ONWARD CHAIN *

Front Garden

Enclosed front garden with pathway leading to property.

Entrance Porch

Wooden flooring, storage, access to property.

Lounge Area

13' 2" x 11' 10" (4.01m x 3.61m)

Wooden flooring, two gas radiators, double glazed window to the front aspect, bay, stairs leading to the first floor.

Kitchen Area

8' 9" x 7' 11" (2.67m x 2.41m)

Wall and base cupboard units, electric fan oven, induction hob, stainless steel sink, under stairs storage, freestanding fridge/freezer, combi boiler, wooden flooring, extension to worktop.

Landing

Access to all rooms, double glazed window to the rear aspect, carpet throughout, storage cupboard, loft hatch.

Bedroom One

11' 10" x 9' 9" (3.61m x 2.97m)

Two double glazed windows to the front aspect, carpet throughout, gas radiator, built in wardrobe.

Shower Room

Shower cubicle, wash hand basin with storage below, low level w/c, heated towel rail, double glazed window to the rear aspect, utility area with plumbing for washing machine.

Loft Space

Partially boarded, well-insulated, storage space.

Rear Garden

Enclosed North facing garden with decking, patio and two small storage sheds.





Welcome to this charming one-bedroom terraced home, perfectly situated in a residential neighbourhood, and available with no onward chain.

Step inside and discover a bright and spacious open-plan kitchen and living area. Upstairs, you'll find a generous double bedroom complete with built-in wardrobe storage, alongside a stylish shower room for added convenience.

Outside, enjoy low-maintenance front and rear gardens, ideal for relaxing or easy upkeep, plus the benefit of one allocated parking space.

This property is an excellent choice for first-time buyers or investors looking to expand their portfolio.



view this property online fox-and-sons.co.uk/Property/BIT112635



welcome to

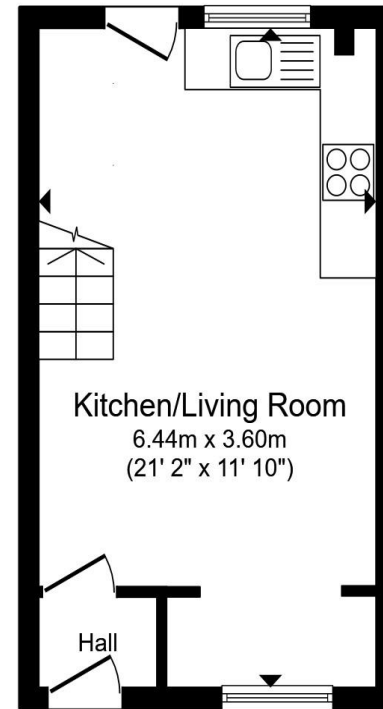
Bracklesham Close, Southampton

- Mid-Terrace House
- One Double Bedroom
- Open Plan Kitchen/Living Area
- Shower Room
- One Allocated Parking Space

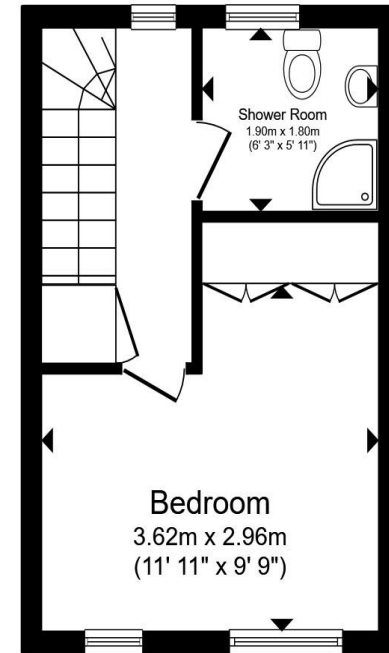
Tenure: Freehold EPC Rating: C
Council Tax Band: B

offers in the region of

£210,000



Ground Floor



First Floor

Total floor area 44.7 m² (481 sq.ft.) approx

This floor plan is for illustrative purposes only. It is not drawn to scale. Any measurements, floor areas (including any total floor area), openings and orientation are approximate. No details are guaranteed, they cannot be relied upon for any purpose and they do not form part of any agreement. No liability is taken for any error, omission or misstatement. A party must rely upon its own inspection(s). Powered by www.propertybox.io

 fox & sons

view this property online fox-and-sons.co.uk/Property/BIT112635



Property Ref:
BIT112635 - 0006

1. MONEY LAUNDERING REGULATIONS Intending purchasers will be asked to produce identification documentation at a later stage and we would ask for your co-operation in order that there is no delay in agreeing the sale. 2. These particulars do not constitute part or all of an offer or contract. 3. The measurements indicated are supplied for guidance only and as such must be considered incorrect. Potential buyers are advised to recheck measurements before committing to any expense. 4. We have not tested any apparatus, equipment, fixtures or services and it is in the buyers interest to check the working condition of any appliances. 5. Where an EPC, or a Home Report (Scotland only) is held for this property, it is available for inspection at the branch by appointment. If you require a printed version of a Home Report, you will need to pay a reasonable production charge reflecting printing and other costs. 6. We are not able to offer an opinion either written or verbal on the content of these reports and this must be obtained from your legal representative. 7. Whilst we take care in preparing these reports, a buyer should ensure that his/her legal representative confirms as soon as possible all matters relating to title including the extent and boundaries of the property and other important matters before exchange of contracts.

Fox & Sons is a trading name of Sequence (UK) Limited which is registered in England and Wales under company number 4268443, Registered Office is Cumbria House, 16-20 Hockliffe Street, Leighton Buzzard, Bedfordshire, LU7 1GN. VAT Registration Number is 500 2481 05.

 fox & sons



023 8044 6724



Bitterne@fox-and-sons.co.uk



390c Bitterne Road, Bitterne, SOUTHAMPTON,
Hampshire, SO18 5RS



fox-and-sons.co.uk