



Bitterne Road West, Southampton SO18 1BL

welcome to

Maple Leaf Bitterne Road West, Southampton

BOOK TO VIEW!!

This stylish 1 bedroom first floor flat in Bitterne features a spacious lounge, modern kitchen, double bedroom and modern bathroom. Perfect for couples or individuals!

Entrance Hall

Double glazed window to front, stairs from ground floor entrance, split level hallway, doors to;

Lounge

15' x 14' 5" (4.57m x 4.39m)

Double glazed bay window to side, TV point, carpeted, radiator.

Kitchen

10' 11" x 8' 7" (3.33m x 2.62m)

Double glazed window to side, wall and base units, work surfaces, sink and drainer, integrated dual oven/microwave and hob, space for fridge/freezer and washing machine, central heating boiler housed in cupboard, cooker hood above hob.

Bedroom 1

11' 10" x 10' 8" (3.61m x 3.25m)

Double glazed window to front, carpeted, radiator.

Bathroom

Double glazed window to front, bath with mixer taps, w/c, wash hand basin, radiator, partially tiled walls, tiled flooring.





This delightful 1 bedroom first floor flat in Bitterne offers a comfortable and modern living space for individuals or couples looking for a convenient and well-appointed home. The flat boasts a spacious lounge with plenty of natural light. The modern kitchen benefits from sleek countertops and integrated appliances, that make cooking and meal preparation a breeze. The double bedroom is generously sized and offers a peaceful retreat at the end of a long day, along with a modern bathroom.



Located in a convenient area, this flat benefits from good routes that make it easy to travel to nearby towns and cities. Local amenities are within easy reach, offering everything you need for day-to-day living. Parking is available providing convenience for residents with vehicles.



view this property online fox-and-sons.co.uk/Property/BIT111962



welcome to

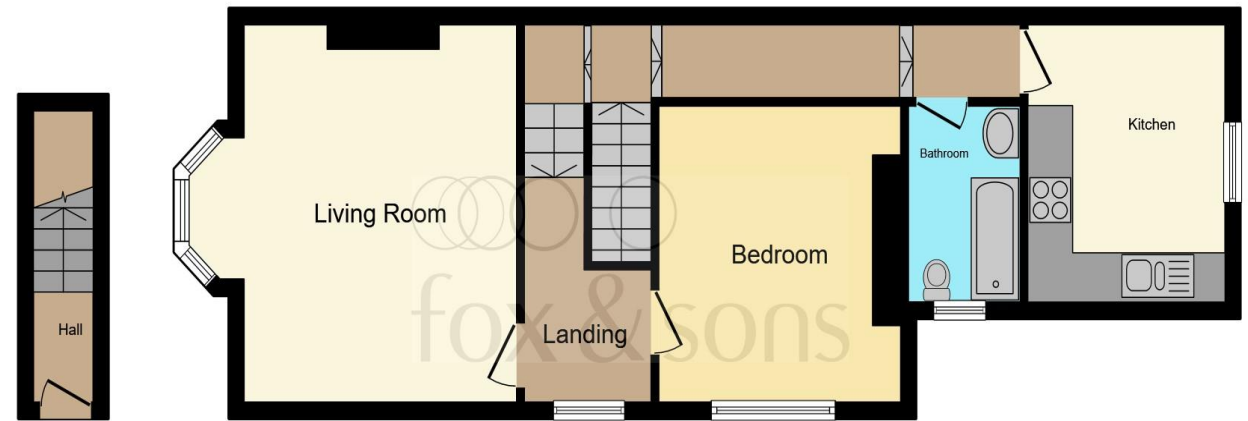
Maple Leaf Bitterne Road West, Southampton

- 1 double bedroom
- First floor flat
- Spacious lounge
- Modern kitchen
- Bathroom

Tenure: Leasehold EPC Rating: C

This is a Leasehold property with details as follows; Term of Lease 125 years from 26 Jul 2019. Should you require further information please contact the branch. Please Note additional fees could be incurred for items such as Leasehold packs.

£160,000



Ground Floor

First Floor

This floor plan is for illustrative purposes only. It is not drawn to scale. Any measurements, floor areas (including any total floor area), openings and orientation are approximate. No details are guaranteed, they cannot be relied upon for any purpose and they do not form part of any agreement. No liability is taken for any error, omission or misstatement. A party must rely upon its own inspection(s). Powered by www.focalagent.com

view this property online fox-and-sons.co.uk/Property/BIT111962



Property Ref:
BIT111962 - 0003

1. MONEY LAUNDERING REGULATIONS Intending purchasers will be asked to produce identification documentation at a later stage and we would ask for your co-operation in order that there is no delay in agreeing the sale. 2. These particulars do not constitute part or all of an offer or contract. 3. The measurements indicated are supplied for guidance only and as such must be considered incorrect. Potential buyers are advised to recheck measurements before committing to any expense. 4. We have not tested any apparatus, equipment, fixtures or services and it is in the buyers interest to check the working condition of any appliances. 5. Where an EPC, or a Home Report (Scotland only) is held for this property, it is available for inspection at the branch by appointment. If you require a printed version of a Home Report, you will need to pay a reasonable production charge reflecting printing and other costs. 6. We are not able to offer an opinion either written or verbal on the content of these reports and this must be obtained from your legal representative. 7. Whilst we take care in preparing these reports, a buyer should ensure that his/her legal representative confirms as soon as possible all matters relating to title including the extent and boundaries of the property and other important matters before exchange of contracts.



023 8044 6724



Bitterne@fox-and-sons.co.uk



390c Bitterne Road, Bitterne, SOUTHAMPTON,
Hampshire, SO18 1BY



fox-and-sons.co.uk