



Eastside Court, Langstaff Way, Southampton SO18 6NP

welcome to

Eastside Court Langstaff Way, Southampton

Situated close to local amenities, this top floor flat in Harefield is perfect for those looking to get onto the property ladder, or for investors looking to expand their portfolio. Benefiting from two bedrooms, spacious lounge, en suite to master and bathroom, contact us to arrange a viewing!

Entrance Hall

Door from communal entrance hall, storage cupboard, airing cupboard, intercom system, storage heater, doors to;

Lounge

14' max x 12' 7" max (4.27m max x 3.84m max)

Double glazed window to rear, double glazed doors to rear, storage heater, TV and telephone point, carpeted, opens onto kitchen;

Kitchen

7' 8" x 9' 2" (2.34m x 2.79m)

Wall and base units, work surfaces, built in electric oven, electric hob with cookerhood above, plumbing for washing machine and dishwasher, space for fridge/freezer, sink and drainer.

Bedroom 1

15' 1" x 8' 4" (4.60m x 2.54m)

Double glazed window to rear, electric radiator, carpeted, TV and telephone points.

En Suite

Shower cubicle, wash hand basin, w/c, heated towel rail, extractor fan, wall mounted heater, shaver point.

Bedroom 2

11' 10" x 8' 10" (3.61m x 2.69m)

Double glazed window to rear, carpeted, electric heater.

Bathroom

Bath with shower attachment, w/c, wash hand basin, heated towel rail, wall heater, extractor fan, shower point, wall mounted cupboard, partially tiled walls.





We're delighted to welcome to the market this two bedroom flat nestled in Harefield, ideally situated close to local amenities. This flat is perfect for first time buyers looking to get onto the property ladder, or investors looking to add to their portfolio.

As you enter, you are greeted by a spacious lounge that seamlessly flows into the fitted kitchen. Both bedrooms are generously sized, with the added bonus of an en suite to the master. The bathroom is functional and practical.

For added peace of mind, parking is available, making this flat not only a delightful home, but also a practical choice for modern living.

Don't miss out on the opportunity to make this lovely flat your own, or to invest in a fantastic property!



view this property online fox-and-sons.co.uk/Property/BIT112170



welcome to

**Eastside Court Langstaff Way,
Southampton**

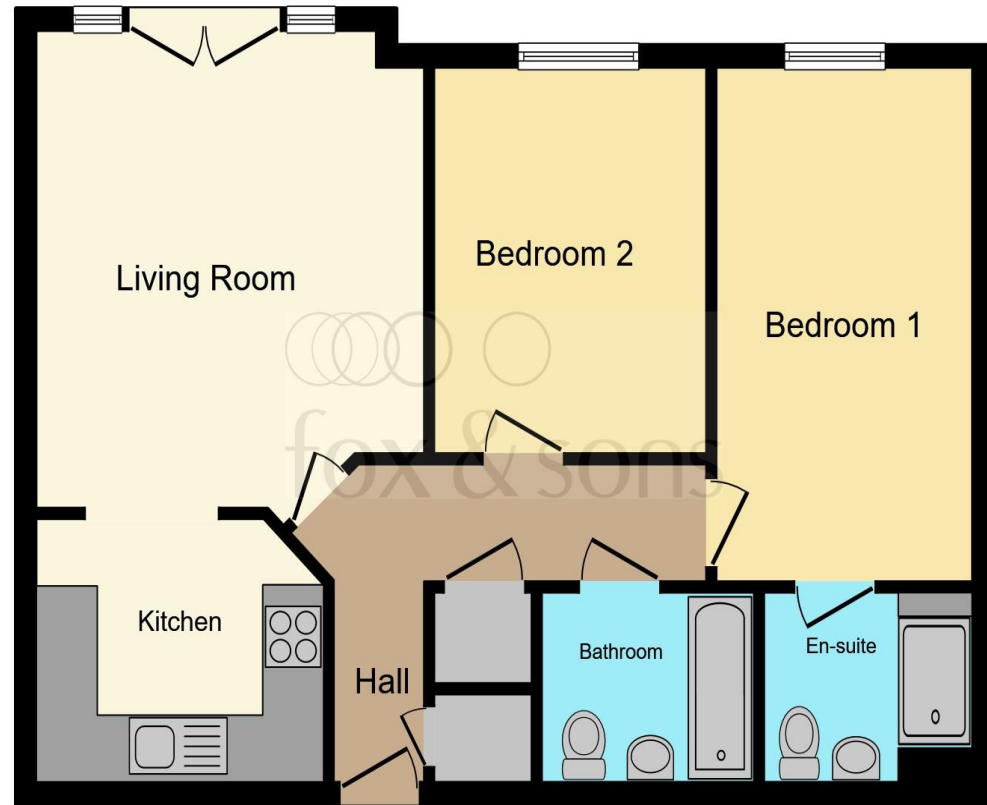
- Two Bedrooms
- Top Floor Flat
- Spacious Lounge
- En Suite to Master
- Bathroom

Tenure: Leasehold EPC Rating: B

This is a Leasehold property with details as follows; Term of Lease 155 years from 01 Nov 2004. Should you require further information please contact the branch. Please Note additional fees could be incurred for items such as Leasehold packs.

offers in excess of

£170,000



This floor plan is for illustrative purposes only. It is not drawn to scale. Any measurements, floor areas (including any total floor area), openings and orientation are approximate. No details are guaranteed, they cannot be relied upon for any purpose and they do not form part of any agreement. No liability is taken for any error, omission or misstatement. A party must rely upon its own inspection(s). Powered by www.focalagent.com

view this property online fox-and-sons.co.uk/Property/BIT112170



Property Ref:
BIT112170 - 0006

1. MONEY LAUNDERING REGULATIONS Intending purchasers will be asked to produce identification documentation at a later stage and we would ask for your co-operation in order that there is no delay in agreeing the sale. 2. These particulars do not constitute part or all of an offer or contract. 3. The measurements indicated are supplied for guidance only and as such must be considered incorrect. Potential buyers are advised to recheck measurements before committing to any expense. 4. We have not tested any apparatus, equipment, fixtures or services and it is in the buyers interest to check the working condition of any appliances. 5. Where an EPC, or a Home Report (Scotland only) is held for this property, it is available for inspection at the branch by appointment. If you require a printed version of a Home Report, you will need to pay a reasonable production charge reflecting printing and other costs. 6. We are not able to offer an opinion either written or verbal on the content of these reports and this must be obtained from your legal representative. 7. Whilst we take care in preparing these reports, a buyer should ensure that his/her legal representative confirms as soon as possible all matters relating to title including the extent and boundaries of the property and other important matters before exchange of contracts.

Fox & Sons is a trading name of Sequence (UK) Limited which is registered in England and Wales under company number 4268443, Registered Office is Cumbria House, 16-20 Hockliffe Street, Leighton Buzzard, Bedfordshire, LU7 1GN. VAT Registration Number is 500 2481 05.

fox & sons



023 8044 6724



Bitterne@fox-and-sons.co.uk



390c Bitterne Road, Bitterne, SOUTHAMPTON,
Hampshire, SO18 1BY



fox-and-sons.co.uk