



Park View, The Crescent, Netley Abbey Southampton SO31 5HW

welcome to

Park View The Crescent, Netley Abbey Southampton

DON'T MISS OUT on viewing this fantastic home, situated in the highly sought after area of Netley Abbey. The property features 3 bedrooms, en suite to master, open plan kitchen/diner with bi-fold doors leading to the rear garden, 2 parking spaces and a downstairs w/c.

Entrance Hall

Stairs to first floor landing, under stairs storage cupboard, doors to;

Lounge

13' 3" x 12' 5" (4.04m x 3.78m)

Double glazed window to the front aspect, carpet throughout.

Kitchen/Diner

20' 6" x 11' 6" (6.25m x 3.51m)

Open plan kitchen/diner with integrated appliances, wall and base cupboard units, work surfaces, double glazed bi-fold doors leading to the rear garden, integrated sink, breakfast bar, overhead extractor and spotlights.

Cloakroom

W/c, wash hand basin.

Landing

Access to all rooms.

Bedroom 1

12' 3" x 8' 11" (3.73m x 2.72m)

Double glazed window to the front aspect, carpet throughout, door leading to;

En Suite

Double glazed window to the front aspect, shower cubicle, w/c, wash hand basin.

Bedroom 2

11' 8" x 11' (3.56m x 3.35m)

Double glazed window to the rear aspect, carpet throughout.

Bedroom 3

11' 8" x 9' 1" (3.56m x 2.77m)

Double glazed window to the rear aspect, carpet throughout.

Bathroom

Double glazed window to the side aspect, bath, w/c, wash hand basin.





Discover this beautifully presented 3 bedroom detached house, located in the highly sought after area of Netley Abbey. This exquisite home offers spacious living, featuring a welcoming lounge when you enter the home.

The open plan kitchen/diner is a true highlight, flooded with plenty of natural light through large bi-fold doors that lead to the rear garden. The kitchen area is modern, featuring integrated appliances and a breakfast bar. The property also boasts a downstairs w/c for added convenience.

Upstairs, there are three bedrooms, all comprising built in storage. The master bedroom features an en suite and the separate bathroom accommodates the remaining bedrooms.

With two dedicated parking spaces and a generous rear garden, this home is a great choice for families or professionals alike.



view this property online fox-and-sons.co.uk/Property/BIT112402



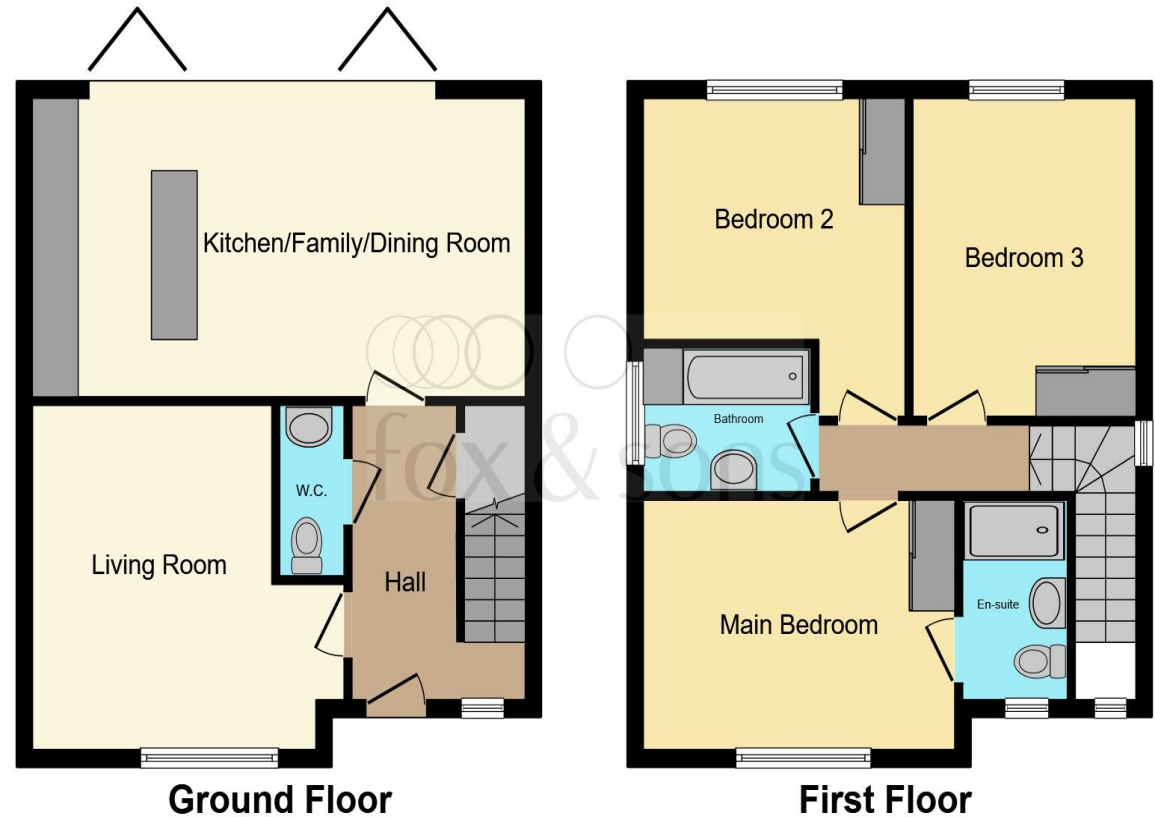
welcome to

Park View The Crescent, Netley Abbey Southampton

- Detached House
- 3 Bedrooms
- Kitchen/Diner with Bi-Fold Doors
- Presented Beautifully Throughout
- En Suite to Master

Tenure: Freehold EPC Rating: B

£450,000



This floor plan is for illustrative purposes only. It is not drawn to scale. Any measurements, floor areas (including any total floor area), openings and orientation are approximate. No details are guaranteed, they cannot be relied upon for any purpose and they do not form part of any agreement. No liability is taken for any error, omission or misstatement. A party must rely upon its own inspection(s). Powered by www.focalagent.com

view this property online fox-and-sons.co.uk/Property/BIT112402



Property Ref:
BIT112402 - 0005

1. MONEY LAUNDERING REGULATIONS Intending purchasers will be asked to produce identification documentation at a later stage and we would ask for your co-operation in order that there is no delay in agreeing the sale. 2. These particulars do not constitute part or all of an offer or contract. 3. The measurements indicated are supplied for guidance only and as such must be considered incorrect. Potential buyers are advised to recheck measurements before committing to any expense. 4. We have not tested any apparatus, equipment, fixtures or services and it is in the buyers interest to check the working condition of any appliances. 5. Where an EPC, or a Home Report (Scotland only) is held for this property, it is available for inspection at the branch by appointment. If you require a printed version of a Home Report, you will need to pay a reasonable production charge reflecting printing and other costs. 6. We are not able to offer an opinion either written or verbal on the content of these reports and this must be obtained from your legal representative. 7. Whilst we take care in preparing these reports, a buyer should ensure that his/her legal representative confirms as soon as possible all matters relating to title including the extent and boundaries of the property and other important matters before exchange of contracts.

Fox & Sons is a trading name of Sequence (UK) Limited which is registered in England and Wales under company number 4268443, Registered Office is Cumbria House, 16-20 Hockliffe Street, Leighton Buzzard, Bedfordshire, LU7 1GN. VAT Registration Number is 500 2481 05.


fox & sons



023 8044 6724



Bitterne@fox-and-sons.co.uk



390c Bitterne Road, Bitterne, SOUTHAMPTON,
Hampshire, SO18 1BY



fox-and-sons.co.uk