



Chillerton, Netley Abbey, Southampton SO31 5GU

welcome to

Chillerton, Netley Abbey Southampton

BOOK TO VIEW!!

Situated in the desirable area of Netley, don't miss out on viewing this spacious home. The property is available with no onward chain and features two reception rooms, spacious kitchen, downstairs bedroom with en suite, family bathroom and parking for 3 cars.

Entrance Hall

Access to all rooms, double glazed window to the side aspect.

Lounge

21' 6" x 11' 5" (6.55m x 3.48m)

Carpet throughout, gas radiator, double glazed window to front aspect.

Dining Room

9' 3" x 8' 3" (2.82m x 2.51m)

Carpet throughout, gas radiator, patio doors leading to garden, arch opening into kitchen.

Bedroom 4

Situated on the ground floor, double glazed window to the front aspect, carpet throughout, built in storage, access to en suite.

Kitchen

19' 5" x 10' 2" (5.92m x 3.10m)

Double glazed window to rear aspect, breakfast bar area, wall and base cupboard units, work surfaces, space for white goods, Range cooker with electric hob, overhead extractor.

Landing

Access to all rooms, carpeted, loft hatch with access, airing cupboard.

Bedroom 1

12' 9" x 9' 6" (3.89m x 2.90m)

Gas radiator, carpet throughout, double glazed windows to the side and rear aspect.

En Suite

W/c, wash hand basin, walk-in shower, heated towel rail, tiled throughout.

Bedroom 2

9' 8" x 9' 5" (2.95m x 2.87m)

Carpet throughout, double glazed window to the front aspect, gas radiator.

Bedroom 3

9' 5" x 8' 5" (2.87m x 2.57m)

Double glazed window to the rear aspect, carpet throughout, gas radiator.

Bathroom

W/c. wash hand basin, bath tub with overhead shower, heated towel rail, double glazed window to the rear aspect, extractor fan.

Loft Space

Partially boarded, pull out ladder, currently used for storage.

Rear Garden

Enclosed South facing rear garden, lawn and patio areas, wooden shed, side access.





Nestled in the heart of Netley, we're delighted to welcome to the market this spacious 4 bedroom semi-detached house.

As you enter, you are greeted by a generous lounge with doors leading to a second reception room/dining room. The kitchen is spacious with plenty of worktop and storage space, integrated appliances and space for white goods. Bedroom 4 is located downstairs, featuring an en suite for added convenience.

Upstairs, the property benefits from three reasonably sized bedrooms, all boasting plenty of natural light and carpeted throughout. The family bathroom is functional featuring a bath with overhead shower.

To the front of the property you will find a driveway, with enough parking available for three cars. The rear garden is South facing and enclosed, with patio and lawn areas and a wooden shed which is currently used for storage.



view this property online fox-and-sons.co.uk/Property/BIT112382



welcome to

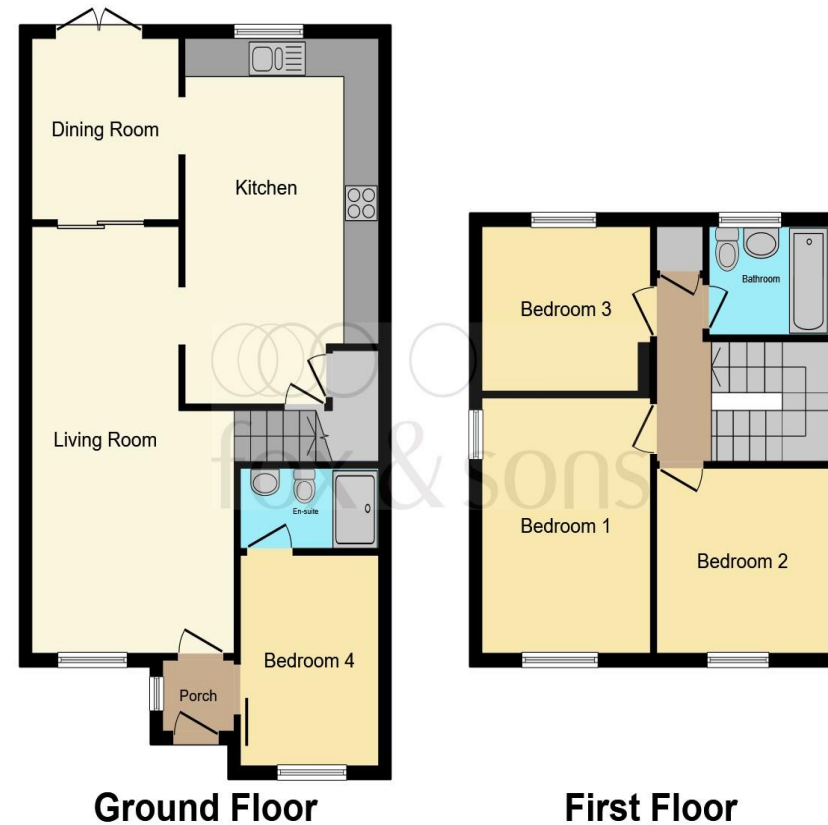
Chillerton, Netley Abbey Southampton

- Semi-Detached House
- 4 Bedrooms
- Spacious Rooms
- Downstairs Bedroom with En Suite
- Driveway Suitable for 3 Cars

Tenure: Freehold EPC Rating: B

offers in excess of

£350,000



This floor plan is for illustrative purposes only. It is not drawn to scale. Any measurements, floor areas (including any total floor area), openings and orientation are approximate. No details are guaranteed, they cannot be relied upon for any purpose and they do not form part of any agreement. No liability is taken for any error, omission or misstatement. A party must rely upon its own inspection(s). Powered by www.focalagent.com

view this property online fox-and-sons.co.uk/Property/BIT112382



Property Ref:
BIT112382 - 0004

1. MONEY LAUNDERING REGULATIONS Intending purchasers will be asked to produce identification documentation at a later stage and we would ask for your co-operation in order that there is no delay in agreeing the sale. 2. These particulars do not constitute part or all of an offer or contract. 3. The measurements indicated are supplied for guidance only and as such must be considered incorrect. Potential buyers are advised to recheck measurements before committing to any expense. 4. We have not tested any apparatus, equipment, fixtures or services and it is in the buyers interest to check the working condition of any appliances. 5. Where an EPC, or a Home Report (Scotland only) is held for this property, it is available for inspection at the branch by appointment. If you require a printed version of a Home Report, you will need to pay a reasonable production charge reflecting printing and other costs. 6. We are not able to offer an opinion either written or verbal on the content of these reports and this must be obtained from your legal representative. 7. Whilst we take care in preparing these reports, a buyer should ensure that his/her legal representative confirms as soon as possible all matters relating to title including the extent and boundaries of the property and other important matters before exchange of contracts.

Fox & Sons is a trading name of Sequence (UK) Limited which is registered in England and Wales under company number 4268443, Registered Office is Cumbria House, 16-20 Hockliffe Street, Leighton Buzzard, Bedfordshire, LU7 1GN. VAT Registration Number is 500 2481 05.


fox & sons



023 8044 6724



Bitterne@fox-and-sons.co.uk



390c Bitterne Road, Bitterne, SOUTHAMPTON,
Hampshire, SO18 1BY



fox-and-sons.co.uk