



**Poppy Fields, Bullar Road, Southampton SO18 1EJ**

**welcome to**

## **Poppy Fields Bullar Road, Southampton**

Fox & Sons are delighted to welcome this charming 2 bedroom first floor flat in Bitterne Park available as a shared ownership at a 50% share. Ideal for first time buyers looking to buy their first home in a desirable area. Contact us to arrange a viewing!

### **Entrance Hall**

Radiator, laminate flooring, intercom, storage cupboard.

### **Lounge/Diner**

20' 5" x 10' 11" ( 6.22m x 3.33m )

Laminate flooring, two radiators, double glazed window to side, double glazed Juliet balcony to front, two TV points.

### **Kitchen**

9' x 7' 10" ( 2.74m x 2.39m )

Vinyl flooring, double glazed window to front, sink with draining board, space for washing machine, space for tumble dryer, space for fridge/freezer, gas hob, electric oven, oven hood, splashback tiles, boiler.

### **Bedroom 1**

17' 4" x 9' ( 5.28m x 2.74m )

Carpeted, double glazed window to front, radiator, integrated wardrobe.

### **Bedroom 2**

14' 4" x 8' 3" ( 4.37m x 2.51m )

Laminate flooring, double glazed window to front, integrated desk and wardrobe, radiator, TV point.

### **Bathroom**

Vinyl flooring, w/c, bath with shower over, tiles around, sink with storage underneath, heated towel rail, ventilation.





**This charming first floor flat in Bitterne Park is the ideal home for first time buyers looking to take their first step onto the property ladder. Boasting a spacious lounge/diner, this flat offers a comfortable and inviting living space. The fitted kitchen comes complete with ample storage space and space for appliances.**

**The flat benefits from two bedrooms, both with integrated storage and plenty of natural light. The modern bathroom is sleek and stylish, offering a tranquil space to unwind after a long day.**

**Conveniently located close to local amenities, residents will benefit from easy access to shops. Additionally, the flat is situated near the picturesque River Itchen. Further benefits include an allocated parking space, ensuring residents will always have a convenient spot to park their vehicle.**

**Available as a shared ownership property at a 50% share, this flat offers an affordable opportunity to own a home in a desirable area. Don't miss out on the chance to make this lovely flat your own!**



***view this property online*** [fox-and-sons.co.uk/Property/BIT111997](https://fox-and-sons.co.uk/Property/BIT111997)



welcome to

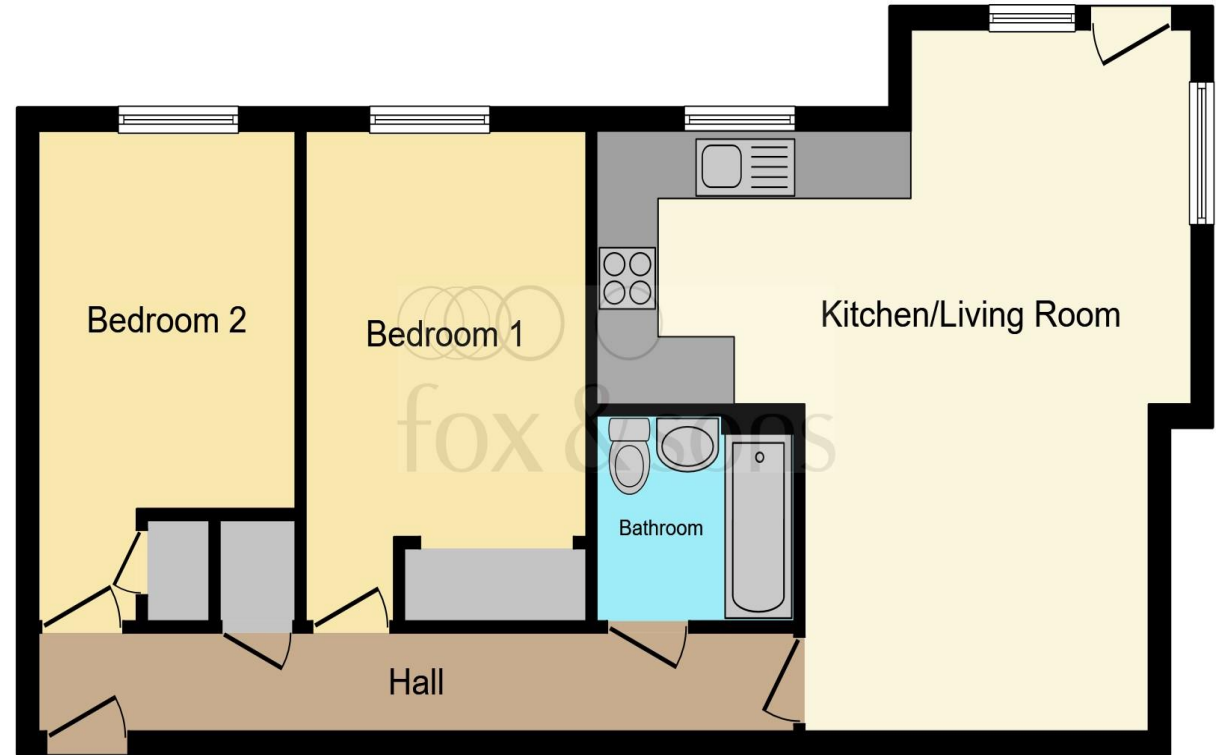
## Poppy Fields Bullar Road, Southampton

- SHARED OWNERSHIP AT £86,000 FOR 50% SHARE
- CONTACT US FOR MORE INFORMATION
- Spacious lounge/diner
- Modern bathroom
- Close to local amenities

Tenure: Leasehold EPC Rating: B

This is a Leasehold property. We are awaiting further details about the Term of the lease. For further information please contact the branch. Please note additional fees could be incurred for items such as Leasehold packs.

**£86,000**



This floor plan is for illustrative purposes only. It is not drawn to scale. Any measurements, floor areas (including any total floor area), openings and orientation are approximate. No details are guaranteed, they cannot be relied upon for any purpose and they do not form part of any agreement. No liability is taken for any error, omission or misstatement. A party must rely upon its own inspection(s). Powered by [www.focalagent.com](http://www.focalagent.com)

**view this property online** [fox-and-sons.co.uk/Property/BIT111997](http://fox-and-sons.co.uk/Property/BIT111997)



Property Ref:  
BIT111997 - 0002

1. MONEY LAUNDERING REGULATIONS Intending purchasers will be asked to produce identification documentation at a later stage and we would ask for your co-operation in order that there is no delay in agreeing the sale. 2. These particulars do not constitute part or all of an offer or contract. 3. The measurements indicated are supplied for guidance only and as such must be considered incorrect. Potential buyers are advised to recheck measurements before committing to any expense. 4. We have not tested any apparatus, equipment, fixtures or services and it is in the buyers interest to check the working condition of any appliances. 5. Where an EPC, or a Home Report (Scotland only) is held for this property, it is available for inspection at the branch by appointment. If you require a printed version of a Home Report, you will need to pay a reasonable production charge reflecting printing and other costs. 6. We are not able to offer an opinion either written or verbal on the content of these reports and this must be obtained from your legal representative. 7. Whilst we take care in preparing these reports, a buyer should ensure that his/her legal representative confirms as soon as possible all matters relating to title including the extent and boundaries of the property and other important matters before exchange of contracts.

  
fox & sons



**023 8044 6724**



[Bitterne@fox-and-sons.co.uk](mailto:Bitterne@fox-and-sons.co.uk)



390c Bitterne Road, Bitterne, SOUTHAMPTON,  
Hampshire, SO18 1BY



[fox-and-sons.co.uk](http://fox-and-sons.co.uk)