



Panwell Road, Southampton SO18 6BJ

welcome to

Panwell Road, Southampton

3 bedroom detached house ** 2 reception rooms ** Downstairs w/c ** Conservatory ** Garage * Parking spaces for 2 cars **

Entrance Porch

Single glazed door and window to the front, tiled flooring, door to;

Entrance Hall

Single glazed window to side, single glazed window and door to front, parkay flooring, radiator, telephone point, stairs to first floor landing, door to;

Cloakroom

Single glazed window to rear, w/c, wash hand basin, radiator.

Lounge

14' 3" x 11' 5" (4.34m x 3.48m)
Double glazed bay window to front, radiator, feature fireplace, carpeted, opens into dining room with partition doors.

Dining Room

12' 8" x 10' (3.86m x 3.05m)
Double glazed sliding door to rear leading to lean to, radiator, carpeted.

Kitchen

12' 10" x 7' 8" (3.91m x 2.34m)
Double glazed window to side, single glazed window and door to rear, wall and base units, work surfaces, integrated dual oven and electric hob with cookerhood above, stainless steel sink and drainer, plumbing for washing machine, space for fridge/freezer, larder, radiator, door to;

Lean To

6' x 15' 11" (1.83m x 4.85m)
Single glazed window to side and rear, single glazed door to side leading to garden, carpeted, door to;

Landing

Single glazed window to side, stairs from ground floor entrance hall, carpeted, doors to;

Bedroom 1

14' 4" x 10' (4.37m x 3.05m)
Double glazed bay window to front, wood flooring, radiator, fitted wardrobes, cupboards and bedside cabinets.

Bedroom 2

12' 7" x 10' (3.84m x 3.05m)
Double glazed window to rear, radiator, carpeted.

Bedroom 3

8' 11" x 7' 10" (2.72m x 2.39m)
Double glazed window to front, radiator, carpeted.

Bathroom

Double glazed window to rear, single glazed window to side, bath with mixer taps and shower attachment, separate shower cubicle, w/c, wash hand basin, partially tiled walls, radiator, cupboard housing boiler.

Rear Garden





We are delighted to bring to the market this three bedroom detached family home that has a driveway, The property is down a secluded private road and benefits with two reception room and a downstairs w/c at the rear. The property also boasts three upstairs bedrooms and a four piece bathroom.



view this property online fox-and-sons.co.uk/Property/BIT111655



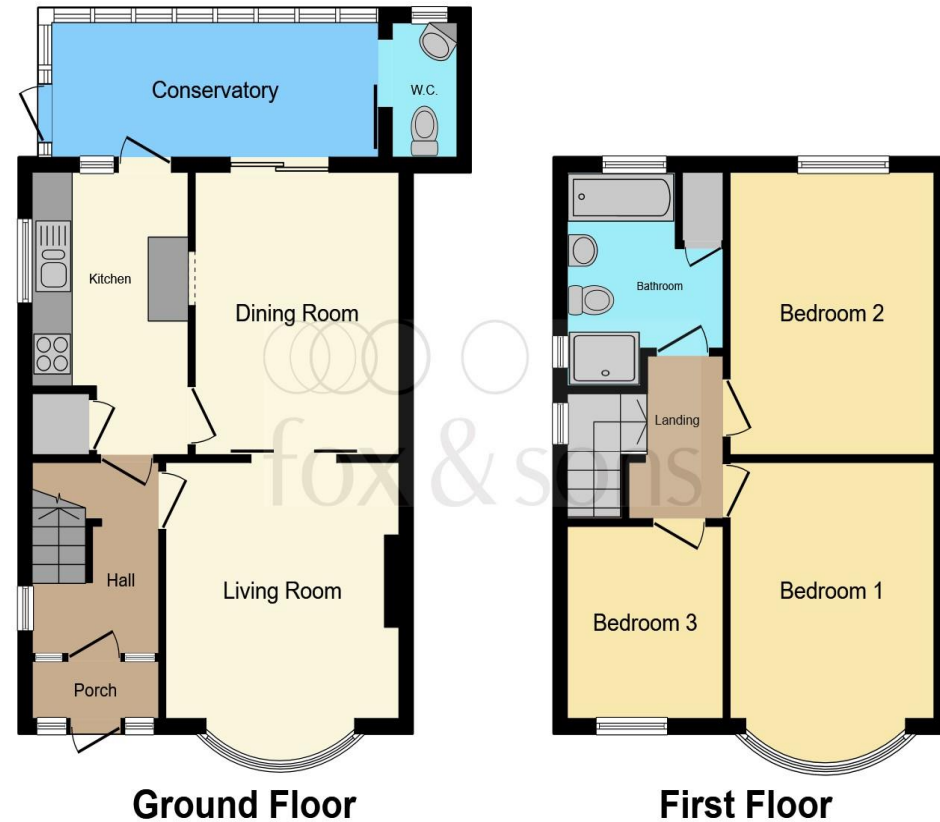
welcome to

Panwell Road, Southampton

- Detached
- Parking
- Two Reception Rooms
- Three Bedrooms
- Upsatirs Bathroom & Downstairs W/C

Tenure: Freehold EPC Rating: D

£370,000



This floor plan is for illustrative purposes only. It is not drawn to scale. Any measurements, floor areas (including any total floor area), openings and orientation are approximate. No details are guaranteed, they cannot be relied upon for any purpose and they do not form part of any agreement. No liability is taken for any error, omission or misstatement. A party must rely upon its own inspection(s). Powered by www.focalagent.com

view this property online fox-and-sons.co.uk/Property/BIT111655



Property Ref:
BIT111655 - 0003

1. MONEY LAUNDERING REGULATIONS Intending purchasers will be asked to produce identification documentation at a later stage and we would ask for your co-operation in order that there is no delay in agreeing the sale. 2. These particulars do not constitute part or all of an offer or contract. 3. The measurements indicated are supplied for guidance only and as such must be considered incorrect. Potential buyers are advised to recheck measurements before committing to any expense. 4. We have not tested any apparatus, equipment, fixtures or services and it is in the buyers interest to check the working condition of any appliances. 5. Where an EPC, or a Home Report (Scotland only) is held for this property, it is available for inspection at the branch by appointment. If you require a printed version of a Home Report, you will need to pay a reasonable production charge reflecting printing and other costs. 6. We are not able to offer an opinion either written or verbal on the content of these reports and this must be obtained from your legal representative. 7. Whilst we take care in preparing these reports, a buyer should ensure that his/her legal representative confirms as soon as possible all matters relating to title including the extent and boundaries of the property and other important matters before exchange of contracts.

Fox & Sons is a trading name of Sequence (UK) Limited which is registered in England and Wales under company number 4268443, Registered Office is Cumbria House, 16-20 Hockliffe Street, Leighton Buzzard, Bedfordshire, LU7 1GN. VAT Registration Number is 500 2481 05.


fox & sons



023 8044 6724



Bitterne@fox-and-sons.co.uk



390c Bitterne Road, Bitterne, SOUTHAMPTON,
Hampshire, SO18 1BY



fox-and-sons.co.uk