



**14 Heron Walk, Durrington Salisbury SP4 8LH**



**welcome to**

## **Heron Walk, Durrington Salisbury**

Four Bedroom Detached Townhouse, set in the heart of Durrington in a quiet cul-de-sac. Close to amenities and school makes this property a perfect family home.



## Front

Driveway and double garage with electrics and lighting

## Entrance Hall

Carpet, radiator, side access door, stairs leading to first floor, downstairs cloak room and utility

## Downstairs Cloakroom

Tiled flooring, radiator, w/c, sink

## Utility Room

4' 1" x 4' 1" ( 1.24m x 1.24m )

Vinyl flooring, space for washing machine and tumble dryer, side aspect window double glazed, large access to under stair storage

## First Floor

### Lounge

16' 5" x 11' 4" ( 5.00m x 3.45m )

Carpet, open fireplace, rear aspect double glazed window, double glazed patio door leading to the rear garden

### Study

9' 5" x 7' 1" ( 2.87m x 2.16m )

Carpet, radiator, rear aspect double glazed window

## Second Floor

### Kitchen/ Breakfast Room

14' 1" x 13' 4" ( 4.29m x 4.06m )

Laminate flooring, front aspect double glazed window, induction hob and extractor hood, built in double oven and convection oven/microwave, space for fridge/freezer and dishwasher.

### Dining Area

12' 1" x 8' 1" ( 3.68m x 2.46m )

Carpet, radiator, front aspect double glazed window

## Third Floor

### Bedroom Two

12' 7" x 11' 5" ( 3.84m x 3.48m )

Carpet, rear aspect double glazed windows, built in wardrobes

### Bedroom Three

11' 11" x 11' 3" ( 3.63m x 3.43m )

Carpet, radiator, rear aspect double glazed window, built in wardrobe

## Fourth Floor

### Bedroom Four

10' x 8' 2" ( 3.05m x 2.49m )

Carpet, radiator, front aspect double glazed window, built in storage

### Bedroom One

12' 4" x 11' 5" ( 3.76m x 3.48m )

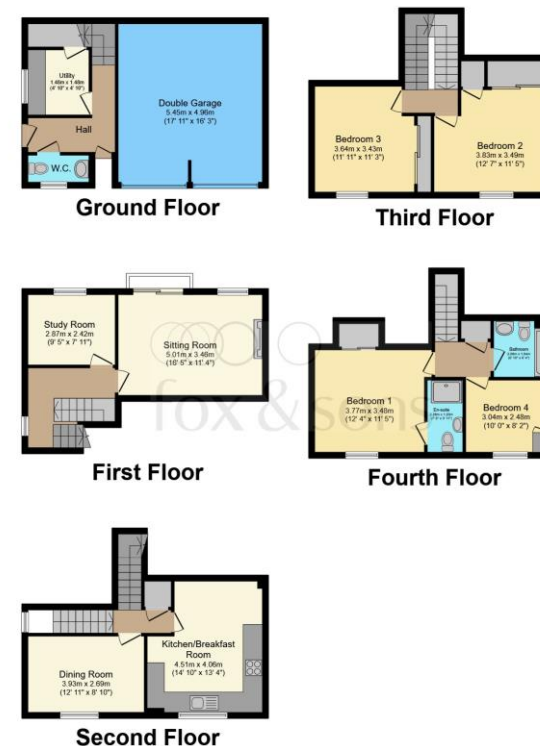
Carpet, radiator, front aspect double glazed window, built in wardrobe access to En-Suite

### En-Suite

Composite floor tiles, power shower, heated towel rail, sensor lighting, w/c and sink

## Rear Garden

Patio area, potting shed, lawn and side access



Total floor area 181.9 m<sup>2</sup> (1,958 sq.ft.) approx

This floorplan is for illustrative purposes only and is not drawn to scale. Measurements, floor-areas, openings and orientations are approximate. They should not be relied upon for any purpose and do not form any part of an agreement. No liability is taken for any error or mis-statement. All parties must rely on their own inspections.



**view this property online** [fox-and-sons.co.uk/Property/AME105482](https://fox-and-sons.co.uk/Property/AME105482)



**welcome to**

## **Heron Walk, Durrington Salisbury**

- Four Bedroom Family Townhouse
- Approx. 1.958 sq.ft.
- Council Tax band E
- Close to Schools
- Close to Amenities

Tenure: Freehold EPC Rating: D

**£475,000**



Please note the marker reflects the postcode not the actual property

**view this property online** [fox-and-sons.co.uk/Property/AME105482](https://fox-and-sons.co.uk/Property/AME105482)



Property Ref:  
AME105482 - 0007

1. MONEY LAUNDERING REGULATIONS Intending purchasers will be asked to produce identification documentation at a later stage and we would ask for your co-operation in order that there is no delay in agreeing the sale. 2. These particulars do not constitute part or all of an offer or contract. 3. The measurements indicated are supplied for guidance only and as such must be considered incorrect. Potential buyers are advised to recheck measurements before committing to any expense. 4. We have not tested any apparatus, equipment, fixtures or services and it is in the buyers interest to check the working condition of any appliances. 5. Where an EPC, or a Home Report (Scotland only) is held for this property, it is available for inspection at the branch by appointment. If you require a printed version of a Home Report, you will need to pay a reasonable production charge reflecting printing and other costs. 6. We are not able to offer an opinion either written or verbal on the content of these reports and this must be obtained from your legal representative. 7. Whilst we take care in preparing these reports, a buyer should ensure that his/her legal representative confirms as soon as possible all matters relating to title including the extent and boundaries of the property and other important matters before exchange of contracts.

Fox & Sons is a trading name of Sequence (UK) Limited which is registered in England and Wales under company number 4268443, Registered Office is Cumbria House, 16-20 Hockliffe Street, Leighton Buzzard, Bedfordshire, LU7 1GN. VAT Registration Number is 500 2481 05.

  
**fox & sons**



**01980 624155**



[Amesbury@fox-and-sons.co.uk](mailto:Amesbury@fox-and-sons.co.uk)



49 Salisbury Street, AMESBURY, Wiltshire, SP4 7AW



**[fox-and-sons.co.uk](https://fox-and-sons.co.uk)**