

Quantum Fields

Littleport



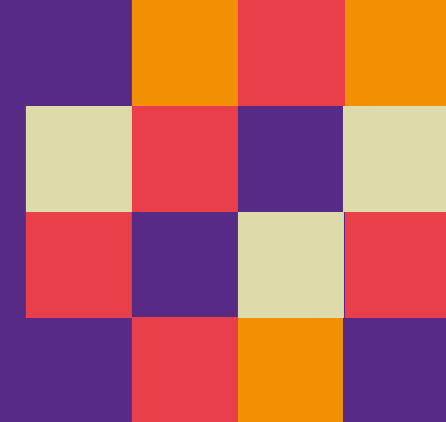
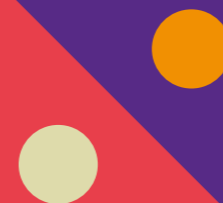
There's no place like home

Putting customers first

Building homes is what Longhurst Group does, and we do it exceptionally well across the Midlands and beyond. Over a number of years, we've seen what people really like about the homes we build and we build on that experience.

So you know that behind the kerb appeal, there's a structure that meets the highest professional standards. You know that every detail has been checked and inspected. That's experience!

Finally, **location, location, location**. You will see, we try to find the very best spot for every taste, as we believe in quality homes, in quality places.





Home is a place for everything

Your home should fit around your life. So whether you're a budding chef, artist or just like to relax, you'll find room for whatever you're passionate about.

Home is for making memories

Your home is your haven. From the minute you unlock your front door, a new chapter in your life begins.

Home is where your family grows

From baby to young adult, having a space in which your family can grow together is so important. That's why we build more than just homes.

Home is a warm place

Whether you're curling up on the sofa or having a family meal, your home will keep you warm and content all year round.

Homes built to last

There's no feeling like stepping into your new home. Whatever your plans are for tomorrow, we build our homes with a long and happy future in mind.

Quantum Fields, Littleport

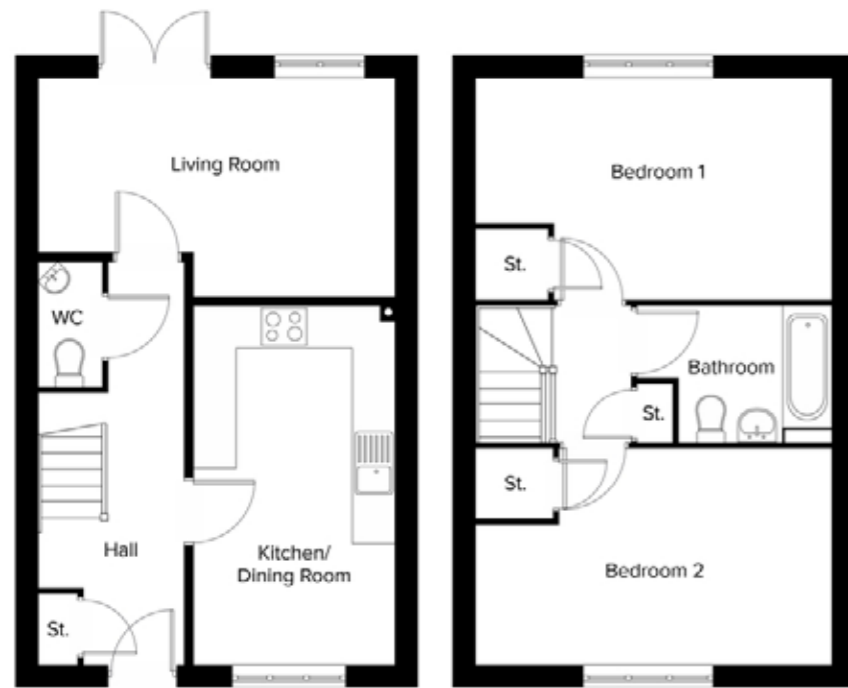
Development Plan



-  **The Cooper 1**
2 bedroom home
-  **The Cooper 2**
2 bedroom home
-  **The Francis**
3 bedroom home
-  **The Spiers**
4 bedroom home



The Cooper 1



Ground Floor

First Floor

Kitchen/Dining
5.01m x 2.83m
16'4" x 9'3"

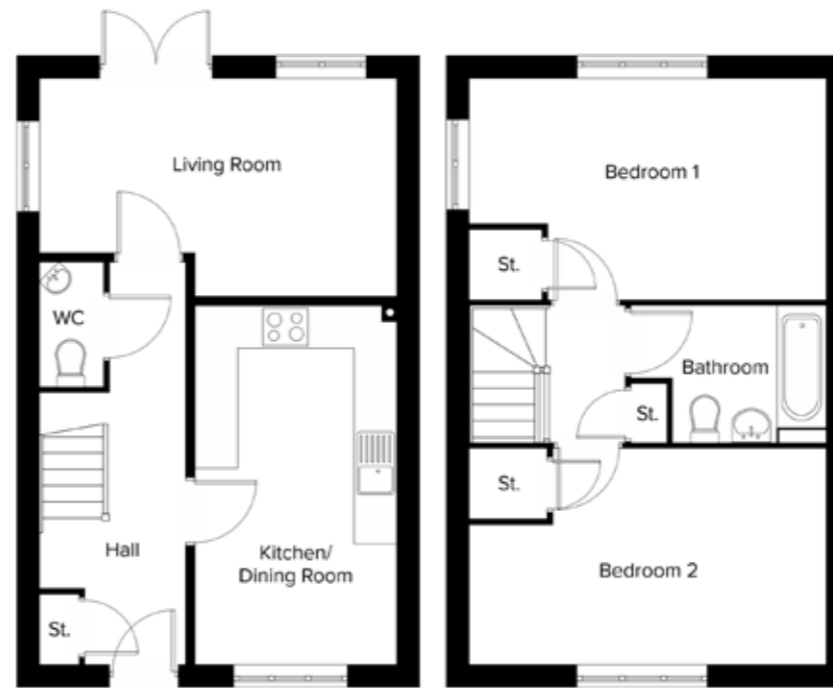
Lounge
3.05m x 4.98m
10'0" x 16'3"

Bedroom 1
3.08m x 4.98m
10'1" x 16'3"

Bedroom 2
3.02m x 4.98m
9'9" x 16'3"

All dimensions are maximum sizes

The Cooper 2



Ground Floor

First Floor

Kitchen/Dining
5.01m x 2.83m
16'4" x 9'3"

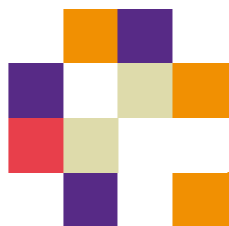
Lounge
3.05m x 4.98m
10'0" x 16'3"

Bedroom 1
3.08m x 4.98m
10'1" x 16'3"

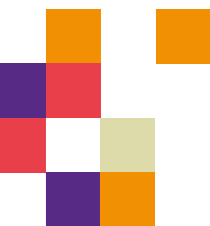
Bedroom 2
3.02m x 4.98m
9'9" x 16'3"

All dimensions are maximum sizes

Dimensions stated are to be used as guidance only and should not be used as a basis for furnishings, furniture or appliance spaces. Dimensions for such purposes must be verified against actual site measurements. Please note the handing of plots may vary from the floor plans shown. All images are used for illustrative purposes only and are representative only. They may not be the same as the actual home you purchase and the specification may differ. Images may be of a slightly different model of home, individual features such as windows, brick, carpets, paint and other material colours may vary and also the specification of fittings may vary. Any furnishings and furniture shown are not included in any sale. Please check with a member of our sales team for details of the exact specification for each property type and the associated prices.

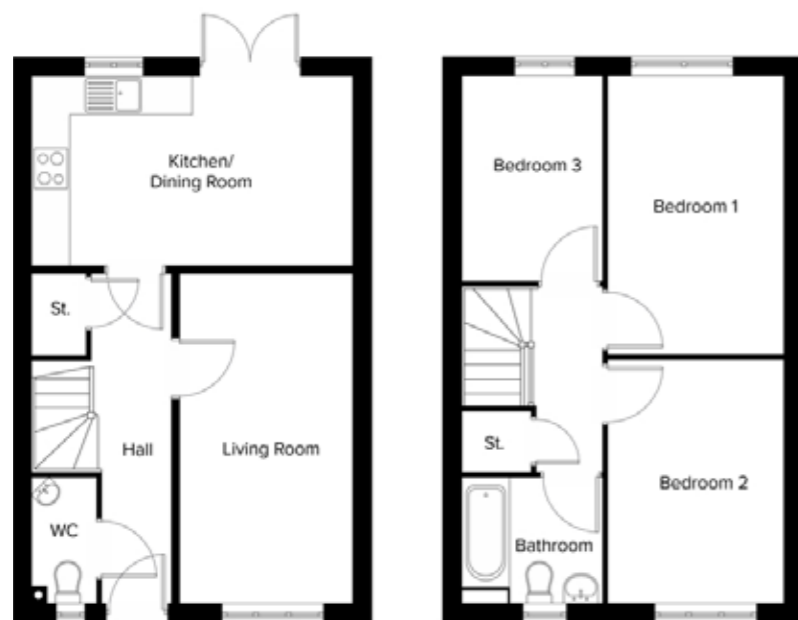


Dimensions stated are to be used as guidance only and should not be used as a basis for furnishings, furniture or appliance spaces. Dimensions for such purposes must be verified against actual site measurements. Please note the handing of plots may vary from the floor plans shown. All images are used for illustrative purposes only and are representative only. They may not be the same as the actual home you purchase and the specification may differ. Images may be of a slightly different model of home, individual features such as windows, brick, carpets, paint and other material colours may vary and also the specification of fittings may vary. Any furnishings and furniture shown are not included in any sale. Please check with a member of our sales team for details of the exact specification for each property type and the associated prices.





The Francis



Ground Floor

First Floor

Kitchen/Dining
2.95m x 4.98m
9'8" x 16'3"

Lounge
5.10m x 2.71m
16'7" x 8'10"

Bedroom 1
4.32m x 2.73m
14'2" x 8'10"

Bedroom 2
3.84m x 2.73m
12'6" x 8'10"

Bedroom 3
3.17m x 2.18m
10'4" x 7'1"

All dimensions are maximum sizes

Dimensions stated are to be used as guidance only and should not be used as a basis for furnishings, furniture or appliance spaces. Dimensions for such purposes must be verified against actual site measurements. Please note the handing of plots may vary from the floor plans shown. All images are used for illustrative purposes only and are representative only. They may not be the same as the actual home you purchase and the specification may differ. Images may be of a slightly different model of home, individual features such as windows, brick, carpets, paint and other material colours may vary and also the specification of fittings may vary. Any furnishings and furniture shown are not included in any sale. Please check with a member of our sales team for details of the exact specification for each property type and the associated prices.

The Spiers



Ground Floor

First Floor

Kitchen/Dining
6.00m x 4.03m
19'7" x 13'2"

Lounge
3.77m x 4.93m
12'4" x 16'2"

Bedroom 1
3.48m x 3.55m
11'4" x 11'6"

Bedroom 2
3.38m x 3.44m
11'1" x 11'3"

Bedroom 3
2.56m x 3.44m
8'4" x 11'3"

Bedroom 4
2.46m x 3.55m
8'1" x 11'6"

All dimensions are maximum sizes

Dimensions stated are to be used as guidance only and should not be used as a basis for furnishings, furniture or appliance spaces. Dimensions for such purposes must be verified against actual site measurements. Please note the handing of plots may vary from the floor plans shown. All images are used for illustrative purposes only and are representative only. They may not be the same as the actual home you purchase and the specification may differ. Images may be of a slightly different model of home, individual features such as windows, brick, carpets, paint and other material colours may vary and also the specification of fittings may vary. Any furnishings and furniture shown are not included in any sale. Please check with a member of our sales team for details of the exact specification for each property type and the associated prices.

Our commitment to you

Before you move

- Our friendly sales team will provide you with support and guidance throughout the home buying process
- At pre-reservation stage you will be shown details of the appearance and location of your chosen new home, together with all relevant surrounding information
- The reservation agreement will set out the key terms of your home purchase, including the reservation period, purchase price and other important information
- We will go through the specification and layout of your home and details of any pre-contractual information to enable you to make an informed decision
- We will inform you of your main point of contact who will assist you with information during your reservation and after you have moved into your new home
- We will regularly communicate with you to keep you informed of the progress of your new home and your dedicated point of contact will respond to any queries you may have
- We want to make your move as enjoyable as possible and our welcoming and knowledgeable staff will be with you every step of the way to provide a service that is tailored to you and your needs.

When/after you move in

- On the day you move a dedicated sales advisor will welcome you to your new home
- A detailed homecare booklet will be provided to help you settle in
- Shortly after you have moved in, we will make courtesy calls/visits to ensure you are happy with your new surroundings
- Your new home is covered by an NHBC or similar industry regulated 10-year insurance scheme covering the fabric and structural integrity of your new home.

We do value your comments and feedback so we can continually improve and enhance our service. If you have any comments you'd like to share with us, please contact 0345 601 9095 or newhomessales@longhurst-group.org.uk





For sales enquiries

Longhurst Group, 1 Crown Way,
Rushden NN10 6BS

 0345 601 9095

 newhomessales@longhurst-group.org.uk

 longhurst-group.org.uk

Further information relating to Longhurst Group can be accessed via our website: longhurst-group.org.uk

The information contained within this booklet is offered in good faith and is believed to be correct. However, accuracy is not guaranteed. No liability will attach to Longhurst Group, their representatives or agents in respect of any statement contained here.