



**Jensons Way, Whittington, King's Lynn, PE33 9FT**



**welcome to**

**Jensons Way, Whittington, King's Lynn**

Chain free! A fantastic opportunity to purchase this immaculately presented, three bedroom semi-detached house, positioned within a rural village setting. This beautiful home boasts an open plan lounge/diner, stunning kitchen with integrated appliances & en suite, plus large rear garden & garage.



**Accommodation:**

Double-glazed entrance door to:

**Entrance Hall**

Door to the front. Stairs leading to the first floor landing.

**Cloakroom**

Fitted with WC & wash hand basin.

**Kitchen**

12' 2" x 9' ( 3.71m x 2.74m )

This contemporary fitted kitchen includes a range of wall and base units with marble effect worksurfaces over, an inset sink & drainer unit, built-in double oven & induction hob with integrated extractor unit over. There is also an integrated washing machine, integrated dishwasher and integrated fridge/freezer. Double glazed window to the front.

**Lounge / Diner**

16' 5" max x 12' 5" max ( 5.00m max x 3.78m max )

Double glazed window to the front. Telephone & television points. Under-stairs storage cupboard. Double-glazed French doors to the rear leading to the rear garden.

**First Floor Landing**

Stairs from the entrance hall. Loft access. Radiator. Storage cupboard.

**Bedroom One**

12' 7" x 8' 7" ( 3.84m x 2.62m )

Double-glazed window to the rear. Radiator. Television point.

**En Suite**

Fitted with WC, wash hand basin & shower cubicle. Extractor fan.

**Bedroom Two**

9' 6" x 9' ( 2.90m x 2.74m )

Double-glazed window to the front. Radiator. Television point.

**Bedroom Three**

8' 8" x 7' 5" ( 2.64m x 2.26m )

Double-glazed window to the rear. Radiator. Television point.

**Bathroom**

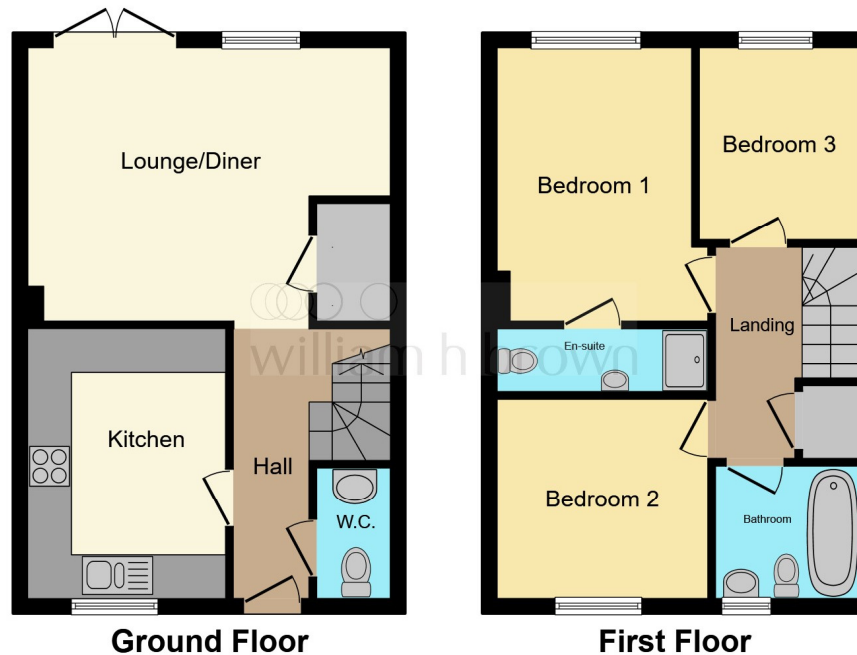
Fitted with WC, wash hand basin with vanity unit & bath with mixer taps & shower over. Heated towel rail. Extractor fan. Partly-tiled walls. Double-glazed window to the front.

**Outside**

To the front of the property, a shared driveway provides off-road parking for 2-3 cars & leads to the garage. A pathway leads to the sizable rear garden which is fully enclosed by timber fencing & is mainly laid to lawn, alongside a patio area.

**Agent's Note**

Waste from the property is served by a septic tank of private supply & heating to the property is served by Air Source Heating. Please contact the branch for more information if required.



This floor plan is for illustrative purposes only. It is not drawn to scale. Any measurements, floor areas (including any total floor area), openings and orientation are approximate. No details are guaranteed, they cannot be relied upon for any purpose and they do not form part of any agreement. No liability is taken for any error, omission or misstatement. A party must rely upon its own inspection(s). Powered by [www.focalagent.com](http://www.focalagent.com)



**view this property online** [williamhbrown.co.uk/Property/DHM112114](http://williamhbrown.co.uk/Property/DHM112114)



**welcome to**

## **Jensons Way, Whittington, King's Lynn**

- Three bedroom semi-detached house
- No onward chain!
- Contemporary kitchen with integrated appliances
- WC, en suite + family bathroom
- Garage + driveway parking

Tenure: Freehold EPC Rating: B  
Council Tax Band: B

offers in excess of

**£300,000**



Please note the marker reflects the  
postcode not the actual property

**view this property online** [williamhbrown.co.uk/Property/DHM112114](https://www.williamhbrown.co.uk/Property/DHM112114)



Property Ref:  
DHM112114 - 0004

1. MONEY LAUNDERING REGULATIONS Intending purchasers will be asked to produce identification documentation at a later stage and we would ask for your co-operation in order that there is no delay in agreeing the sale. 2. These particulars do not constitute part or all of an offer or contract. 3. The measurements indicated are supplied for guidance only and as such must be considered incorrect. Potential buyers are advised to recheck measurements before committing to any expense. 4. We have not tested any apparatus, equipment, fixtures or services and it is in the buyers interest to check the working condition of any appliances. 5. Where an EPC, or a Home Report (Scotland only) is held for this property, it is available for inspection at the branch by appointment. If you require a printed version of a Home Report, you will need to pay a reasonable production charge reflecting printing and other costs. 6. We are not able to offer an opinion either written or verbal on the content of these reports and this must be obtained from your legal representative. 7. Whilst we take care in preparing these reports, a buyer should ensure that his/her legal representative confirms as soon as possible all matters relating to title including the extent and boundaries of the property and other important matters before exchange of contracts.

William H Brown is a trading name of Sequence (UK) Limited which is registered in England and Wales under company number 4268443, Registered Office is Cumbria House, 16-20 Hockliffe Street, Leighton Buzzard, Bedfordshire, LU7 1GN. VAT Registration Number is 500 2481 05.



**william h brown**



**01366 387638**



[DownhamMarket@williamhbrown.co.uk](mailto:DownhamMarket@williamhbrown.co.uk)



2 Market Place, DOWNHAM MARKET, Norfolk,  
PE38 9DE



**[williamhbrown.co.uk](https://www.williamhbrown.co.uk)**