



Wheatley Hall Road, Wheatley Doncaster

welcome to

Wheatley Hall Road, Wheatley Doncaster

Situated in this popular location close to local amenities is this well-presented three bedroom semi-detached home which is ideal for first time buyers or growing families. the property has front and rear gardens, a shared driveway, off road parking and a garage.



Entrance Hall

With a front facing sealed unit door and a side facing double glazed window. There is a useful storage cupboard, a central heating radiator, dado rail and laminate flooring.

Lounge

12' to bay x 10' 3" to recess (3.66m to bay x 3.12m to recess)

With a front facing double glazed bay window, a central heating radiator and coving to the ceiling. The lounge is open plan to the dining room.

Dining Room

9' 4" x 13' 6" to recess (2.84m x 4.11m to recess)

With coving to the ceiling and a central heating radiator.

Kitchen

12' 8" x 6' 11" (3.86m x 2.11m)

With a rear facing double glazed window and sealed unit door. Fitted with wall and base units with work surfaces housing the 1 1/2 bowl sink and drainer with mixer tap. the kitchen has an electric hob with extractor above, an electric oven, space for a fridge-freezer and plumbing for a washing machine and dryer. There is a cupboard housing the gas central heating boiler, a useful understairs storage cupboard and access to the rear lobby.

Rear Lobby

With access to the downstairs WC and a rear facing sealed unit door giving access to the garden.

Downstairs W.C.

With a side facing obscure double glazed window. Fitted with a low flush WC and a central heating radiator.

First Floor Landing

With a side facing obscure double glazed window and access to the loft.

Bedroom One

12' 10" to bay x 8' 8" to recess incl wardrobes (3.91m to bay x 2.64m to recess incl wardrobes)

With a front facing double glazed bay window, a central heating radiator and wardrobes providing hanging and storage space.

Bedroom Two

9' 7" to recess x 9' 6" (2.92m to recess x 2.90m)

With a rear facing double glazed window, a central heating radiator and a storage cupboard with hanging space.

Bedroom Three

7' 4" x 6' 1" (2.24m x 1.85m)

With a front facing double glazed window and a central heating radiator.

Shower Room

Fitted with a low flush WC, a wash hand basin and a corner shower cubicle with shower. There is a chrome heated towel rail and tiling to the walls and floor.

Outside

To the front of the property there is a lawned garden with a shared driveway providing off road parking and leads to the garage. To the rear of the property there is an enclosed lawned garden.

Garage

With an up and over door.



view this property online williamhbrown.co.uk/Property/DCR123318



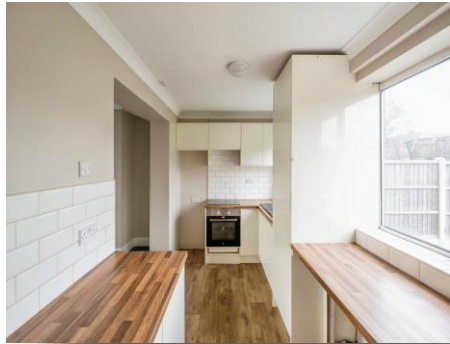
welcome to

Wheatley Hall Road, Wheatley Doncaster

- SPACIOUS LOUNGE DINING ROOM
- KITCHEN
- DOWNSTAIRS WC
- THREE BEDROOMS AND SHOWER ROOM
- FRONT AND REAR GARDENS

Tenure: Freehold EPC Rating: D

£150,000



Please note the marker reflects the postcode not the actual property

view this property online williamhbrown.co.uk/Property/DCR123318



Property Ref:
DCR123318 - 0005

1. MONEY LAUNDERING REGULATIONS Intending purchasers will be asked to produce identification documentation at a later stage and we would ask for your co-operation in order that there is no delay in agreeing the sale. 2. These particulars do not constitute part or all of an offer or contract. 3. The measurements indicated are supplied for guidance only and as such must be considered incorrect. Potential buyers are advised to recheck measurements before committing to any expense. 4. We have not tested any apparatus, equipment, fixtures or services and it is in the buyers interest to check the working condition of any appliances. 5. Where an EPC, or a Home Report (Scotland only) is held for this property, it is available for inspection at the branch by appointment. If you require a printed version of a Home Report, you will need to pay a reasonable production charge reflecting printing and other costs. 6. We are not able to offer an opinion either written or verbal on the content of these reports and this must be obtained from your legal representative. 7. Whilst we take care in preparing these reports, a buyer should ensure that his/her legal representative confirms as soon as possible all matters relating to title including the extent and boundaries of the property and other important matters before exchange of contracts.

William H Brown is a trading name of Sequence (UK) Limited which is registered in England and Wales under company number 4268443, Registered Office is Cumbria House, 16-20 Hockliffe Street, Leighton Buzzard, Bedfordshire, LU7 1GN. VAT Registration Number is 500 2481 05.



william h brown



01302 327121



doncaster@williamhbrown.co.uk



4-5 Kingsway House, Hall Gate, DONCASTER,
South Yorkshire, DN1 3NX



williamhbrown.co.uk