

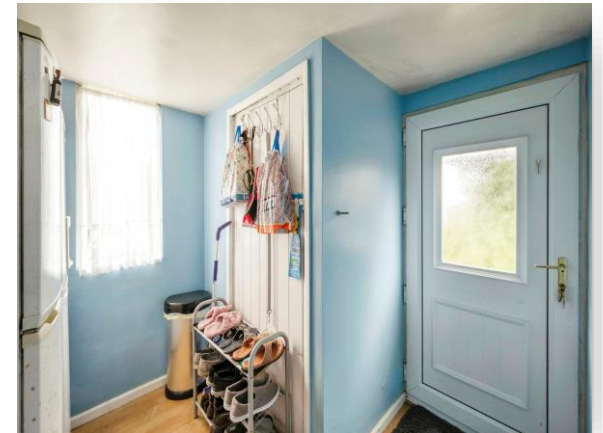


Laburnum Drive, Armthorpe Doncaster

welcome to

Laburnum Drive, Armthorpe Doncaster

Situated in this popular location in Armthorpe is this well-presented three bedroom semi-detached family home. The property has a good sized enclosed lawned garden to the rear and is ideal for first time buyers or growing families.



Lounge

17' 9" x 14' 8" (5.41m x 4.47m)

With a front facing sealed unit door, a front facing double glazed window and rear facing French doors to the garden. There are two central heating radiators, dado rail, coving to the ceiling, stairs which rise to the first floor landing and a feature fireplace housing the gas fire.

Dining Kitchen

17' 10" x 11' 6" to recess (5.44m x 3.51m to recess)

With front and side facing double glazed windows. Fitted with wall and base units with coordinating work surfaces housing the sink and drainer. The kitchen has gas and electric points, plumbing for a washing machine and space for a tumble dryer. There is a cupboard housing the gas central heating boiler, coving to the ceiling, tiled flooring to the kitchen area and laminate flooring to the dining area. A door gives access to the utility area.

Utility Area

8' 4" max x 8' max (2.54m max x 2.44m max)

With a rear facing double glazed window and a side facing sealed unit door. There is laminate flooring, space for white goods and a useful store.

First Floor Landing

With a front facing double glazed window, access to the loft and a useful storage cupboard.

Bedroom One

14' 8" to recess x 9' 1" to recess (4.47m to recess x 2.77m to recess)

With a front facing double glazed window and a central heating radiator.

Bedroom Two

11' 4" x 9' 9" (3.45m x 2.97m)

With rear and side facing double glazed windows, laminate flooring and a central heating radiator.

Bedroom Three

9' 3" incl bulk head x 8' 9" incl bulk head (2.82m incl bulk head x 2.67m incl bulk head)

With a front facing double glazed window, a central heating radiator and bulk head for the stairs.

Bathroom

With a front facing obscure double glazed window. Fitted with a wash hand basin and a panelled bath with shower over and screen. There is tiling to the walls and floor and a central heating radiator.

Separate W.C.

Fitted with a WC and a front facing obscure double glazed window.

Outside

To the front of the property there is an enclosed lawned garden with a driveway providing off road parking. To the rear of the property there is a good sized enclosed lawned garden with mature trees, plants and shrubs, a brick-built barbecue and patio area.



view this property online williamhbrown.co.uk/Property/DCR123380



welcome to

Laburnum Drive, Armthorpe Doncaster

- CLOSE TO LOCAL AMENITIES AND TRANSPORT LINKS
- LOUNGE WITH PATIO DOORS TO GARDEN
- DINING KITCHEN
- UTILITY ROOM
- THREE BEDROOMS

Tenure: Freehold EPC Rating: E
Council Tax Band: A

£160,000



Please note the marker reflects the
postcode not the actual property

view this property online williamhbrown.co.uk/Property/DCR123380



Property Ref:
DCR123380 - 0004

1. MONEY LAUNDERING REGULATIONS Intending purchasers will be asked to produce identification documentation at a later stage and we would ask for your co-operation in order that there is no delay in agreeing the sale. 2. These particulars do not constitute part or all of an offer or contract. 3. The measurements indicated are supplied for guidance only and as such must be considered incorrect. Potential buyers are advised to recheck measurements before committing to any expense. 4. We have not tested any apparatus, equipment, fixtures or services and it is in the buyers interest to check the working condition of any appliances. 5. Where an EPC, or a Home Report (Scotland only) is held for this property, it is available for inspection at the branch by appointment. If you require a printed version of a Home Report, you will need to pay a reasonable production charge reflecting printing and other costs. 6. We are not able to offer an opinion either written or verbal on the content of these reports and this must be obtained from your legal representative. 7. Whilst we take care in preparing these reports, a buyer should ensure that his/her legal representative confirms as soon as possible all matters relating to title including the extent and boundaries of the property and other important matters before exchange of contracts.

William H Brown is a trading name of Sequence (UK) Limited which is registered in England and Wales under company number 4268443, Registered Office is Cumbria House, 16-20 Hockliffe Street, Leighton Buzzard, Bedfordshire, LU7 1GN. VAT Registration Number is 500 2481 05.



william h brown



01302 327121



doncaster@williamhbrown.co.uk



4-5 Kingsway House, Hall Gate, DONCASTER,
South Yorkshire, DN1 3NX



williamhbrown.co.uk