



Greenfield Court, Balby Doncaster

welcome to

Greenfield Court, Balby Doncaster

Situated in this popular development nestled within a cul-de-sac location is this contemporary four bedroom detached family home which has accommodation situated over three floors, a garage and drive, a generous rear garden, a beautifully presented kitchen and a ground floor WC.



Entrance Hall

With a front facing composite door, herringbone tiled patterned flooring, a central heating radiator and stairs which rise to the first floor landing.

Downstairs W.C

Fitted with a WC and a wash hand basin with waterfall mixer taps and splashback tiling. There is an extractor fan, a central heating radiator and a front facing opaque double glazed window.

Lounge Diner

14' 3" x 16' 3" (4.34m x 4.95m)

An attractive lounge with a rear facing double glazed window and rear facing French doors which lead onto the generous rear garden. There is a central heating radiator, a useful understairs storage cupboard, sectioned carpet and stone tiled flooring.

Kitchen

10' 5" x 8' 6" (3.17m x 2.59m)

A fantastic modern kitchen which is fitted with a range of high gloss wall and base units with coordinating work surfaces housing the sink and drainer with mixer tap. The kitchen has a four ring gas hob with a cooker hood above, an electric oven and grill, an area for a fridge-freezer, plumbing for a washing machine and dishwasher. There is a wall mounted boiler, under wall unit lighting, tiled flooring and a front facing double glazed window.

First Floor Landing

From the entrance hall stairs rise to the first floor landing where there is a central heating radiator and an airing cupboard which houses the hot water tank. A filler staircase rises to the second floor.

Bedroom Two

9' x 11' 8" (2.74m x 3.56m)

A double room with a rear facing double glazed window and a central heating radiator.

Bedroom Three

12' x 8' 6" max (3.66m x 2.59m max)

A double room with a front facing double glazed window and a central heating radiator.

Bedroom Four

8' 8" x 7' (2.64m x 2.13m)

With a rear facing double glazed window and a central heating radiator.

Bathroom

Fitted with a WC, a wash hand basin with mixer taps and a tiled L-shaped bath with screen and a thermostatic shower over. The bathroom has tiled flooring, partial tiling to the walls, an extractor fan, a chrome heated towel rail and a front facing opaque double glazed window.

Second Floor

With a central heating radiator and access to bedroom one and the en-suite WC.

Bedroom One

18' 8" x 13' max (5.69m x 3.96m max)

A superb bedroom space with two front facing double glazed windows and a rear facing double glazed window providing an abundance of natural light. There are two central heating radiators and a loft hatch.

En-Suite W.C.

Positioned with a low flush WC and a pedestal wash hand basin. There is partial tiling, a shaving point, a central heating radiator and a rear facing opaque double glazed window.

Outside

To the front of the property, nestled and tucked away within the head of a cul-de-sac there is a lawned front garden with a pathway and driveway which provides off road parking and in-turn leads to the garage. To the side there is a gate which provides access to generous mainly laid to lawn rear garden.

Garage

8' 10" x 18' 3" (2.69m x 5.56m)

With an up and over door, power and lights.



view this property online williamhbrown.co.uk/Property/DCR122215



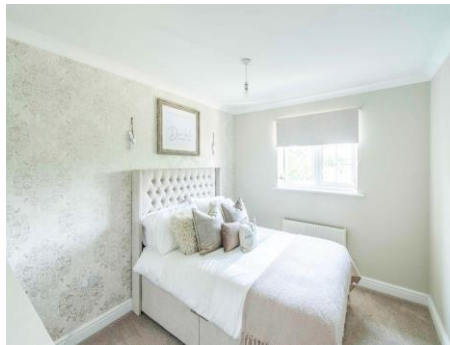
welcome to

Greenfield Court, Balby Doncaster

- SUBSTANTIAL FOUR BEDROOM DETACHED FAMILY HOME
- SITUATED OVER THREE FLOORS
- SPACIOUS LOUNGE DINER
- DRIVEWAY AND GARAGE
- CLOSE TO LOCAL AMENITIES, EXCELLENT TRANSPORT LINKS INCLUDING THE A1 AND THE TOWN CENTRE

Tenure: Freehold EPC Rating: C

£240,000



Please note the marker reflects the postcode not the actual property

view this property online williamhbrown.co.uk/Property/DCR122215



Property Ref:
DCR122215 - 0002

1. MONEY LAUNDERING REGULATIONS Intending purchasers will be asked to produce identification documentation at a later stage and we would ask for your co-operation in order that there is no delay in agreeing the sale. 2. These particulars do not constitute part or all of an offer or contract. 3. The measurements indicated are supplied for guidance only and as such must be considered incorrect. Potential buyers are advised to recheck measurements before committing to any expense. 4. We have not tested any apparatus, equipment, fixtures or services and it is in the buyers interest to check the working condition of any appliances. 5. Where an EPC, or a Home Report (Scotland only) is held for this property, it is available for inspection at the branch by appointment. If you require a printed version of a Home Report, you will need to pay a reasonable production charge reflecting printing and other costs. 6. We are not able to offer an opinion either written or verbal on the content of these reports and this must be obtained from your legal representative. 7. Whilst we take care in preparing these reports, a buyer should ensure that his/her legal representative confirms as soon as possible all matters relating to title including the extent and boundaries of the property and other important matters before exchange of contracts.

William H Brown is a trading name of Sequence (UK) Limited which is registered in England and Wales under company number 4268443, Registered Office is Cumbria House, 16-20 Hockliffe Street, Leighton Buzzard, Bedfordshire, LU7 1GN. VAT Registration Number is 500 2481 05.



william h brown



01302 327121



doncaster@williamhbrown.co.uk



4-5 Kingsway House, Hall Gate, DONCASTER,
South Yorkshire, DN1 3NX



williamhbrown.co.uk