



**Mission Road, Diss IP22 4HX**

**welcome to**

## **Mission Road, Diss**

This 3-bedroom mid-terraced house in Diss features a spacious lounge, modern kitchen with integrated appliances, gas central heating and a low-maintenance courtyard garden. Ideally located close to Diss train station and town centre, it's perfect for first-time buyers and investors.

### **Lounge**

14' 8" x 11' 10" ( 4.47m x 3.61m )

Window to front aspect, front door, radiator, carpet flooring.

Gas central heating

Main roof re-tiled in 2022

### **Kitchen**

12' 10" Max x 7' 7" ( 3.91m Max x 2.31m )

Window to rear aspect, wall and base units, built in sink, boiler, gas hob, radiator, tiled splash back, vinyl flooring.

### **Landing**

Window to rear aspect, carpet flooring.

### **Bedroom 1**

12' 1" Max x 11' 7" ( 3.68m Max x 3.53m )

Window to front aspect, radiator, carpet flooring.

### **Bedroom 2**

7' 2" x 11' 8" ( 2.18m x 3.56m )

Window to front aspect, radiator, airing cupboard, carpet flooring.

### **Bedroom 3**

7' 9" x 6' 11" ( 2.36m x 2.11m )

Window to rear aspect, radiator, carpet flooring.

### **Bathroom**

Window to side aspect, W/C, wash basin, bath tub, radiator, electric shower, vinyl flooring.

### **Rear Garden**

Small courtyard garden, gate access for bins.

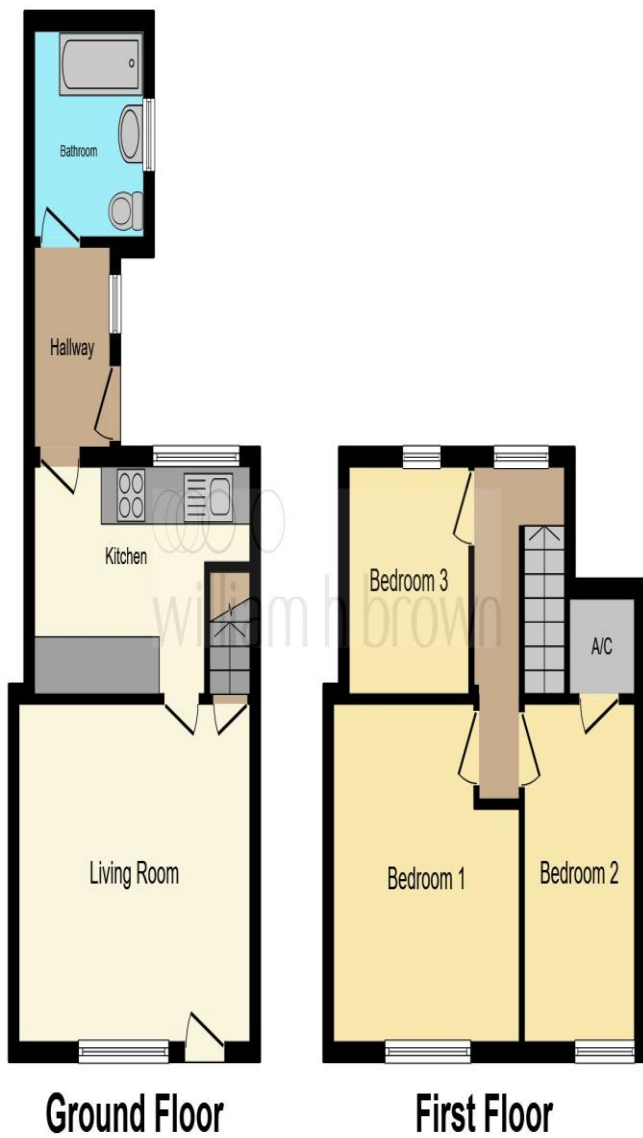
### **Parking**

On street parking

### **Agents Note**

Council tax band: A





**Ground Floor**

**First Floor**

This floor plan is for illustrative purposes only. It is not drawn to scale. Any measurements, floor areas (including any total floor area), openings and orientation are approximate. No details are guaranteed, they cannot be relied upon for any purpose and they do not form part of any agreement. No liability is taken for any error, omission or misstatement. A party must rely upon its own inspection(s). Powered by [www.focalagent.com](http://www.focalagent.com)



**welcome to**  
**Mission Road,**  
**Diss**

- 3-bedroom mid-terraced house
- Modern kitchen with integrated appliances and Spacious Lounge
- Low-maintenance courtyard garden
- Located close to Diss train station and town centre
- Convenient ground floor bathroom

Tenure: Freehold EPC Rating: D  
Council Tax Band: A

**£170,000**



**view this property online** [williamhbrown.co.uk/Property/DSS111006](http://williamhbrown.co.uk/Property/DSS111006)



Property Ref:  
DSS111006 - 0003

1. MONEY LAUNDERING REGULATIONS Intending purchasers will be asked to produce identification documentation at a later stage and we would ask for your co-operation in order that there is no delay in agreeing the sale. 2. These particulars do not constitute part or all of an offer or contract. 3. The measurements indicated are supplied for guidance only and as such must be considered incorrect. Potential buyers are advised to recheck measurements before committing to any expense. 4. We have not tested any apparatus, equipment, fixtures or services and it is in the buyers interest to check the working condition of any appliances. 5. Where an EPC, or a Home Report (Scotland only) is held for this property, it is available for inspection at the branch by appointment. If you require a printed version of a Home Report, you will need to pay a reasonable production charge reflecting printing and other costs. 6. We are not able to offer an opinion either written or verbal on the content of these reports and this must be obtained from your legal representative. 7. Whilst we take care in preparing these reports, a buyer should ensure that his/her legal representative confirms as soon as possible all matters relating to title including the extent and boundaries of the property and other important matters before exchange of contracts.

William H Brown is a trading name of Sequence (UK) Limited which is registered in England and Wales under company number 4268443, Registered Office is Cumbria House, 16-20 Hockliffe Street, Leighton Buzzard, Bedfordshire, LU7 1GN. VAT Registration Number is 500 2481 05.



**william h brown**



**01379 644719**



[Diss@williamhbrown.co.uk](mailto:Diss@williamhbrown.co.uk)



1 Navire House Mere Street, DISS, Norfolk,  
IP22 4AG



**[williamhbrown.co.uk](http://williamhbrown.co.uk)**