



Flexerne Crescent, Ashland MILTON KEYNES MK6 4AP

welcome to

Flexerne Crescent, Ashland MILTON KEYNES

The property comprises, entrance hall, downstairs cloakroom, kitchen, lounge/diner, and conservatory. To the first floor there are two bedrooms and family bathroom, finally on the second floor there is a master suite, with en-suite and built in wardrobe`S. Externally the property benefits from a are

Entrance Hall

Laminate floor, stairs to first floor doors to all rooms.

Cloakroom

Double glazed window to front, WC, wash hand basin, radiator.

Kitchen

10' x 6' 3" (3.05m x 1.91m)

Double glazed window to the front aspect.

Comprehensive range of kitchen storage units at base and eye level with worksurfaces over. 1.5 stainless steel sink. Fitted electric oven. Gas hob. Extractor fan. Space for washing machine and fridge freezer.

Lounge

15' x 13' 1" (4.57m x 3.99m)

Double glazed doors to conservatory. Laminate flooring. Radiator.

Conservatory

9' x 9' 6" (2.74m x 2.90m)

Tiled floor. Electric heating.

First Floor Landing

Carpet, doors to all rooms on first floor. Stairs leading to second floor landing. Double glazed window to the front.

Second Floor Bedroom

20' x 13' 4" (6.10m x 4.06m)

Three double glazed skylight windows. Carpet. Built in wardrobe storage. Radiator.

En-Suite Shower Room

Double glazed skylight window. WC. Wash hand basin. Partly tiled walls. Shower cubicle. Radiator.

First Floor Bedroom

13' 3" x 8' (4.04m x 2.44m)

Double glazed window to the rear. Carpet. Radiator.

First Floor Bedroom

9' x 6' 2" (2.74m x 1.88m)

Double glazed window to the front. Carpet to floor. Radiator.

Bathroom

Double glazed window to the rear. Panelled bath with mixer shower attachment over. WC. Wash hand basin. Partly tiled walls.

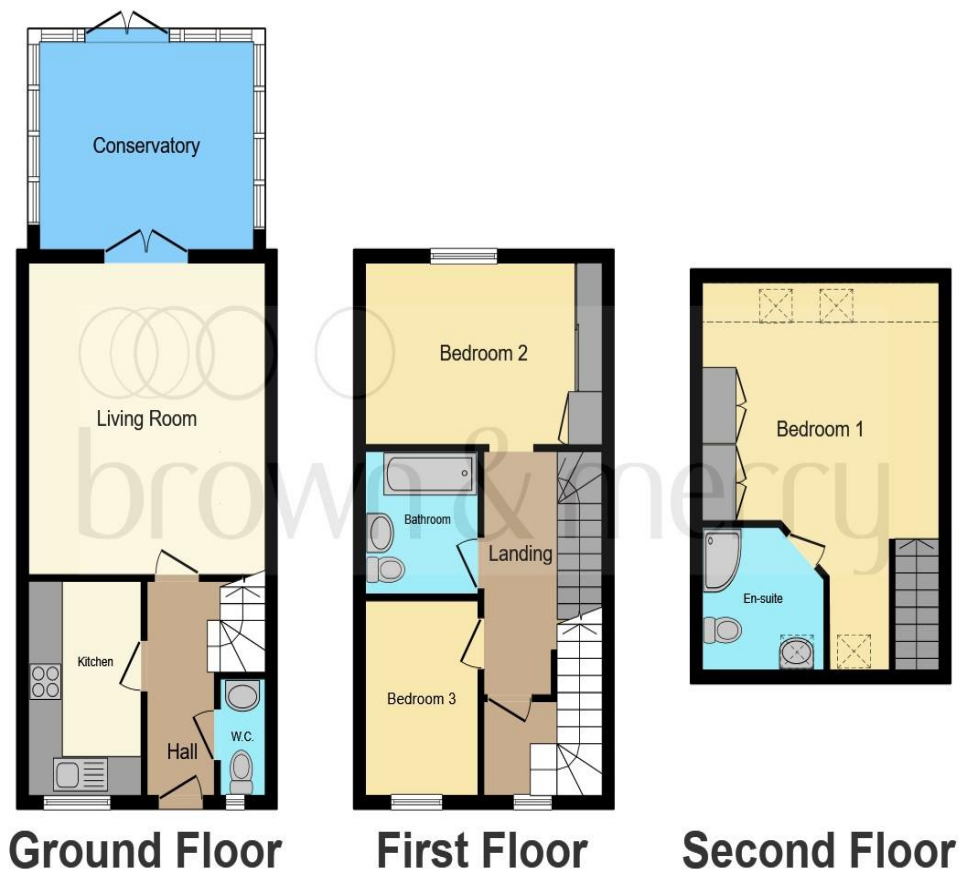
Outside

Rear Garden

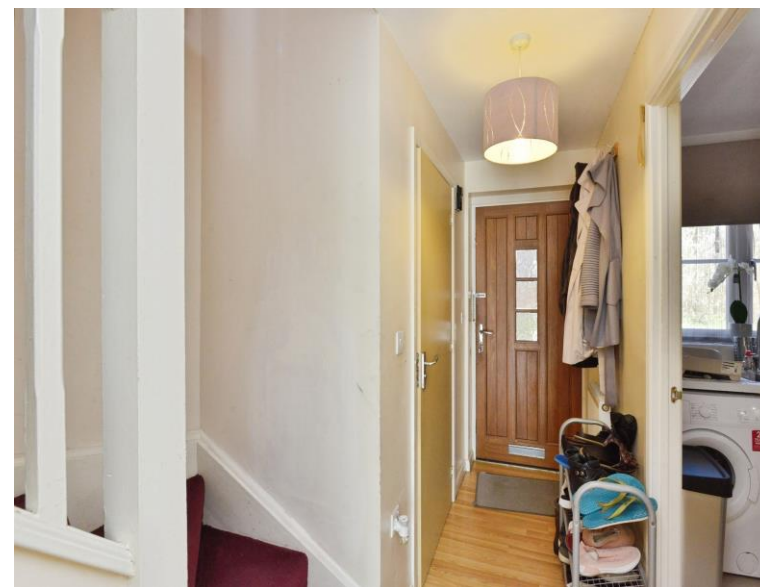
Fully enclosed with astro turf and patio area. Side gated access to house.

Garage

In small block of three. Single garage with up and over door.



This floor plan is for illustrative purposes only. It is not drawn to scale. Any measurements, floor areas (including any total floor area), openings and orientation are approximate. No details are guaranteed, they cannot be relied upon for any purpose and they do not form part of any agreement. No liability is taken for any error, omission or misstatement. A party must rely upon its own inspection(s). Powered by www.focalagent.com



welcome to
Flexerne Crescent,
Ashland MILTON KEYNES

- THREE BEDROOM
- LOUNGE
- ENSUITE TO MASTER
- CONSERVATORY
- GARAGE

Tenure: Freehold EPC Rating: C

offers in excess of

£350,000



view this property online brownandmerry.co.uk/Property/WOS105571



Property Ref:
WOS105571 - 0002

1. MONEY LAUNDERING REGULATIONS Intending purchasers will be asked to produce identification documentation at a later stage and we would ask for your co-operation in order that there is no delay in agreeing the sale. 2. These particulars do not constitute part or all of an offer or contract. 3. The measurements indicated are supplied for guidance only and as such must be considered incorrect. Potential buyers are advised to recheck measurements before committing to any expense. 4. We have not tested any apparatus, equipment, fixtures or services and it is in the buyers interest to check the working condition of any appliances. 5. Where an EPC, or a Home Report (Scotland only) is held for this property, it is available for inspection at the branch by appointment. If you require a printed version of a Home Report, you will need to pay a reasonable production charge reflecting printing and other costs. 6. We are not able to offer an opinion either written or verbal on the content of these reports and this must be obtained from your legal representative. 7. Whilst we take care in preparing these reports, a buyer should ensure that his/her legal representative confirms as soon as possible all matters relating to title including the extent and boundaries of the property and other important matters before exchange of contracts.

Brown & Merry is a trading name of Sequence (UK) Limited which is registered in England and Wales under company number 4268443, Registered Office is Cumbria House, 16-20 Hockliffe Street, Leighton Buzzard, Bedfordshire, LU7 1GN. VAT Registration Number is 500 2481 05.

brown & merry



01908 583231



WoburnSands@brownandmerry.co.uk



9 High Street, Woburn Sands, MILTON KEYNES,
Buckinghamshire, MK17 8RG



brownandmerry.co.uk