



Blanchland Circle, Monkston MILTON KEYNES MK10 9GP

welcome to

Blanchland Circle, Monkston MILTON KEYNES

This great, FOUR-BEDROOM, Detached family home is located in the sought after location of Monkston. with GENEROUS GROUND FLOOR ACCOMMODATION, and an ensuite to the main bedroom, there is a whole lot to like about this house!

Entrance Porch

Radiator double glazed window to front, stairs to first floor, wooden flooring.

Cloakroom

WC. Radiator. Double glazed window to rear.

Lounge

19' 7" narrowing to x 10' 9" (5.97m narrowing to x 3.28m)

Wood flooring throughout. Gas fire place. Two radiators. Double glazed windows to front and side aspect. Double glazed doors opening into the rear garden.

Dining Room

11' 2" narrowing to x 9' 2" (3.40m narrowing to x 2.79m)
Wood flooring throughout. Double glazed window to rear.

Kitchen

19' 7" narrowing to x 9' 2" (5.97m narrowing to x 2.79m)
Fitted with wall and base units. Double oven and space for a dishwasher. 1.5 sink with drainer.
Double glazed windows to the side and rear.

Utility Room

Combi boiler, 2 years old. Space for fridge freezer and washing machine. Radiator. Wood flooring throughout.

Landing

Stairs leading to the first floor. Loft hatch with a partly boarded loft.

Bedroom 1

11' 10" narrowing to x 10' 11" (3.61m narrowing to x 3.33m)

Fully carpeted with fitted storage. Radiator. Double

glazed window to the side aspect. Door leading through to en-suite.

En-Suite

WC and wash hand basin. Walk-in shower, Heated towel rail. Double glazed window to side aspect.

Bedroom 2

14' 5" narrowing to x 12' (4.39m narrowing to x 3.66m)
Fully carpeted. Boiler cupboard and extra storage.
Double glazed window to the side aspect. Radiator.

Bedroom 3

10' 10" narrowing to x 8' 9" (3.30m narrowing to x 2.67m)
Fully carpeted. Radiator. Double glazed windows to the rear and side aspect.

Bedroom 4

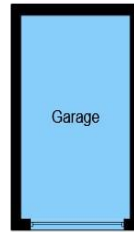
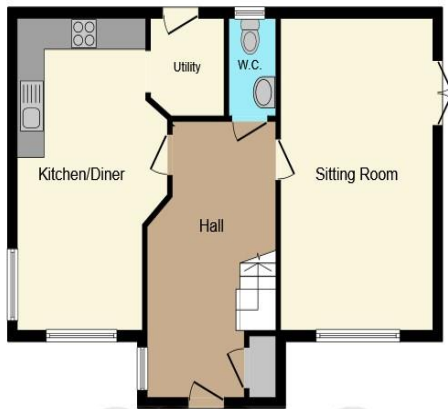
10' 6" narrowing to x 7' 5" (3.20m narrowing to x 2.26m)
Fully carpeted. Radiator. Double glazed window to the side aspect.

Bathroom

Partly tiled with a WC, panelled bath, wash hand basin and shower with mixer tap. Heated towel rail. Double glazed window to the rear aspect.

Outbuilding

Single garage with up-and-over door and power.



Garage

Ground Floor



First Floor

This floor plan is for illustrative purposes only. It is not drawn to scale. Any measurements, floor areas (including any total floor area), openings and orientation are approximate. No details are guaranteed, they cannot be relied upon for any purpose and they do not form part of any agreement. No liability is taken for any error, omission or misstatement. A party must rely upon its own inspection(s). Powered by www.focalagent.com



welcome to
Blanchland Circle,
Monkston MILTON KEYNES

- FOUR BEDROOM DETACHED
- KITCHEN/DINER
- LOUNGE
- CLOAKROOM
- ENSUITE TO MASTER

Tenure: Freehold EPC Rating: C

£525,000



view this property online [brownmerry.co.uk/Property/WOS105495](https://www.brownmerry.co.uk/Property/WOS105495)



Property Ref:
WOS105495 - 0003

1. MONEY LAUNDERING REGULATIONS Intending purchasers will be asked to produce identification documentation at a later stage and we would ask for your co-operation in order that there is no delay in agreeing the sale. 2. These particulars do not constitute part or all of an offer or contract. 3. The measurements indicated are supplied for guidance only and as such must be considered incorrect. Potential buyers are advised to recheck measurements before committing to any expense. 4. We have not tested any apparatus, equipment, fixtures or services and it is in the buyers interest to check the working condition of any appliances. 5. Where an EPC, or a Home Report (Scotland only) is held for this property, it is available for inspection at the branch by appointment. If you require a printed version of a Home Report, you will need to pay a reasonable production charge reflecting printing and other costs. 6. We are not able to offer an opinion either written or verbal on the content of these reports and this must be obtained from your legal representative. 7. Whilst we take care in preparing these reports, a buyer should ensure that his/her legal representative confirms as soon as possible all matters relating to title including the extent and boundaries of the property and other important matters before exchange of contracts.

Brown & Merry is a trading name of Sequence (UK) Limited which is registered in England and Wales under company number 4268443, Registered Office is Cumbria House, 16-20 Hockliffe Street, Leighton Buzzard, Bedfordshire, LU7 1GN. VAT Registration Number is 500 2481 05.

brown & merry



01908 583231



WoburnSands@brownmerry.co.uk



9 High Street, Woburn Sands, MILTON KEYNES,
Buckinghamshire, MK17 8RG



[brownmerry.co.uk](https://www.brownmerry.co.uk)