



Maple Grove, Woburn Sands Milton Keynes MK17 8QN

welcome to

Maple Grove, Woburn Sands Milton Keynes

This great, THREE-BEDROOM, Semi-detached family home is located in the sought after location of Woburn Sands. With a garage conversion providing GENEROUS GROUND FLOOR ACCOMMODATION, and an ensuite to the main bedrom, there is a whole lot to like about this house!

Kitchen/Breakfast Room

20' 5" max x 10' 4" (6.22m max x 3.15m)

Double glazed entrance door to side. Double glazed windows to front and side aspect. Internal door leading to lounge. Kitchen fitted with a range of storage units at base and eye level. 1.5 bowl sink with drainer. Work surfaces. Tiling to splashback areas. Fitted electric oven. Gas hob. Cooker hood. Plumbing and space for dishwasher. Plumbing and space for washing machine. Central heating boiler. Radiator. Under stairs storage cupboard. Space for breakfast table. Stairs to the first floor landing. Stair mood lighting.

Lounge

13' x 10' 5" (3.96m x 3.17m)

Double glazed french doors to rear garden. Radiator. TV point. Downlights.

Dining Room/Bedroom

17' 6" x 9' 6" (5.33m x 2.90m)

Double glazed patio doors to rear garden. Radiator. TV point. Downlights. Door into downstairs shower room.

Shower Room

Double glazed window to front. Shower. Low level WC. Wash hand basin.

First Floor Landing

Downlights. Loft access. Panelling to walls. Doors to bedrooms and bathroom.

Bedroom 1

10' 8" x 9' 7" (3.25m x 2.92m)

Double glazed window to front. Radiator. TV point.

En Suite

Double glazed window to side. Shower cubicle.

Vanity unit with wash hand basin. Extractor fan. Low level WC. Fully tiled. Radiator.

Bedroom 2

13' 5" x 6' 8" (4.09m x 2.03m)

Double glazed windows to front and rear. Radiator. Overstairs storage cupboard. Telephone point.

Bedroom 3

10' 8" x 6' 4" (3.25m x 1.93m)

Double glazed window to rear. Radiator. TV point.

Bathroom

Two double glazed windows to side. Radiator. Bath with mixer taps. Wash hand basin. Extractor fan. Low level WC. Fully tiled walls.

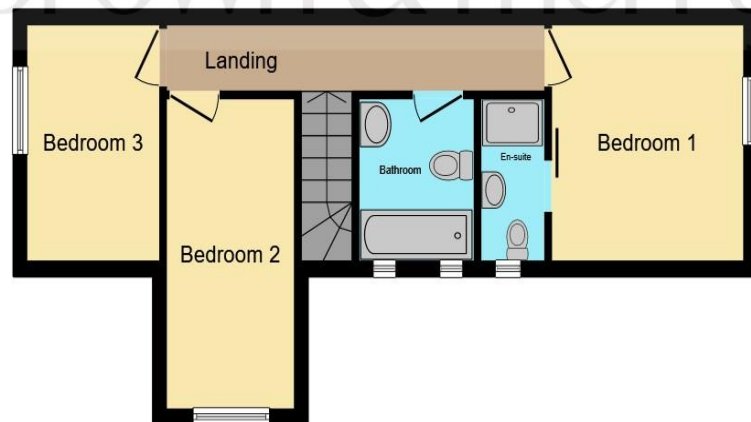
Outside

Front: Block paved driveway providing off road parking for several cars.

Rear: Fully enclosed with patio area, lawn with sleeper edging, water tap and external power points.

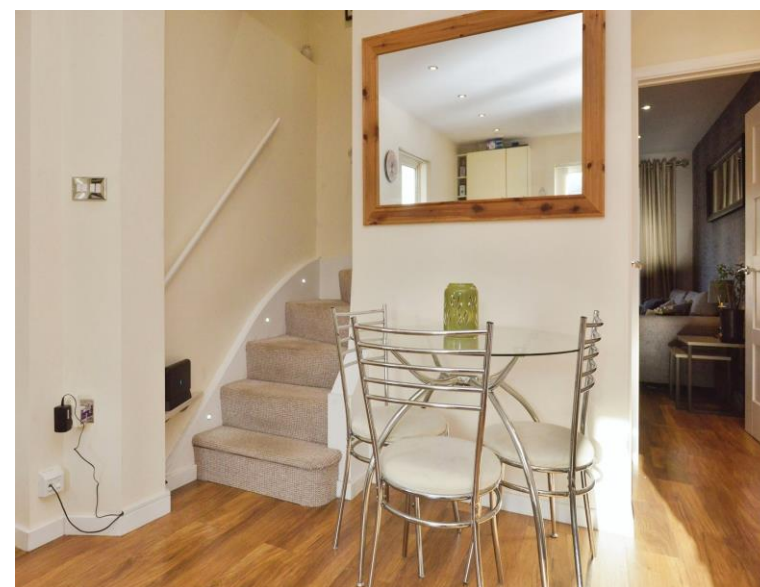


Ground Floor



First Floor

This floor plan is for illustrative purposes only. It is not drawn to scale. Any measurements, floor areas (including any total floor area), openings and orientation are approximate. No details are guaranteed, they cannot be relied upon for any purpose and they do not form part of any agreement. No liability is taken for any error, omission or misstatement. A party must rely upon its own inspection(s). Powered by www.focalagent.com



welcome to
Maple Grove,
Woburn Sands Milton Keynes

- THREE/FOUR BEDROOM SEMI DETACHED
- NO ONWARD CHAIN
- CONVERTED GARAGE
- OFF ROAD PARKING
- WALKABLE TO VILLAGE CENTRE

Tenure: Freehold EPC Rating: D

£425,000



view this property online brownandmerry.co.uk/Property/WOS105460



Property Ref:
WOS105460 - 0003

1. MONEY LAUNDERING REGULATIONS Intending purchasers will be asked to produce identification documentation at a later stage and we would ask for your co-operation in order that there is no delay in agreeing the sale. 2. These particulars do not constitute part or all of an offer or contract. 3. The measurements indicated are supplied for guidance only and as such must be considered incorrect. Potential buyers are advised to recheck measurements before committing to any expense. 4. We have not tested any apparatus, equipment, fixtures or services and it is in the buyers interest to check the working condition of any appliances. 5. Where an EPC, or a Home Report (Scotland only) is held for this property, it is available for inspection at the branch by appointment. If you require a printed version of a Home Report, you will need to pay a reasonable production charge reflecting printing and other costs. 6. We are not able to offer an opinion either written or verbal on the content of these reports and this must be obtained from your legal representative. 7. Whilst we take care in preparing these reports, a buyer should ensure that his/her legal representative confirms as soon as possible all matters relating to title including the extent and boundaries of the property and other important matters before exchange of contracts.

Brown & Merry is a trading name of Sequence (UK) Limited which is registered in England and Wales under company number 4268443, Registered Office is Cumbria House, 16-20 Hockliffe Street, Leighton Buzzard, Bedfordshire, LU7 1GN. VAT Registration Number is 500 2481 05.


brown & merry



01908 583231



WoburnSands@brownandmerry.co.uk



9 High Street, Woburn Sands, MILTON KEYNES,
Buckinghamshire, MK17 8RG



brownandmerry.co.uk