



**Twiselton Heath, Wolverton, Milton Keynes, MK12 5GE**

**welcome to**

## **Twiselton Heath, Wolverton, Milton Keynes**

Situated in the heart of WOLVERTON is this beautifully presented FOUR bedroom, SEMI-DETACHED home, offering modern living across three floors, perfect for families or professionals seeking space, comfort and prime location close to local amenities and transport links, this home is not to be missed.

### **Entrance Hall:**

Radiator, doors to all rooms and stairs rising to first floor.

### **Cloakroom:**

WC, wash hand basin, radiator and extractor.

### **Kitchen:**

12' 11" into bay x 8' ( 3.94m into bay x 2.44m )  
Fitted with a range of units to both base and eye level and drawers with worksurfaces over, stainless steel sink/drainage and mixer taps over, built in oven, induction hob and extractor fan over, washer/dryer and dishwasher to remain, space for fridge/freezer, radiator and double glazed box bay window to front aspect.

### **Living/Dining Room:**

15' 1" Max x 20' 7" Max ( 4.60m Max x 6.27m Max )  
Double glazed box bay window with French doors to rear garden.

### **Stairs Rising To First Floor:**

On the first floor, you'll discover three well-proportioned bedrooms, including two generous doubles. A stylish family bathroom completes this level.

### **Bedroom Two:**

12' 4" Max x 8' 4" ( 3.76m Max x 2.54m )  
Radiator, fitted wardrobe and double glazed window to rear aspect.

### **Bedroom Three:**

11' x 8' 4" ( 3.35m x 2.54m )  
Radiator, fitted wardrobes, and double glazed window to front aspect.

### **Bedroom Four:**

6' 5" x 9' 5" Max ( 1.96m x 2.87m Max )  
Radiator and double glazed window to rear aspect.

### **Bathroom:**

Suite comprising: Bath, WC, wash hand basin, heated towel rail, extractor fan and double glazed window to front aspect.





**Stairs Rising To Second Floor:**

The second floor is dedicated to the impressive master suite, offering a peaceful retreat with ample space, built-in storage, and a private en-suite shower room.

**Bedroom One:**

23' 2" into bay x 11' 4" ( 7.06m into bay x 3.45m )  
Double skylight windows to rear aspect, two radiators, fitted wardrobes and door to en-suite:

**En-Suite:**

Suite comprising: Shower cubicle, WC, wash hand basin, heated towel rail and double glazed window to front aspect.

**Outside:****Front:**

Driving to the left providing off road parking for three cars and pathway leading to front door.

**Rear:**

Private rear garden, with steps leading up to grass area and patio ideal for relaxing or hosting guests.

**Agents Note:**

This property has solar panels, please speak to the office for more details.



***view this property online*** [brownmerry.co.uk/Property/STS107704](https://www.brownmerry.co.uk/Property/STS107704)



welcome to

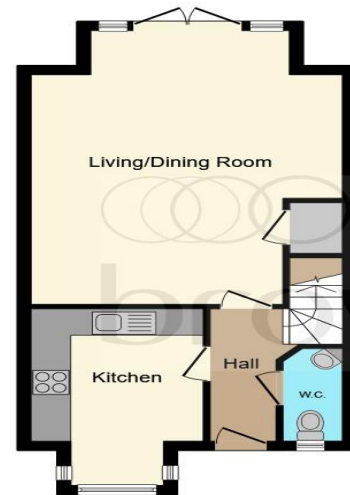
## Twiselton Heath, Wolverton, Milton Keynes

- CHAIN FREE
- FOUR BEDROOMS
- SEMI-DETACHED
- EN-SUITE FROM MASTER BEDROOM
- CLOAKROOM

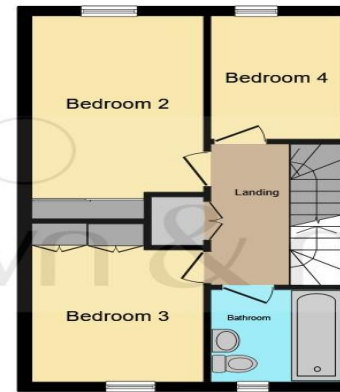
Tenure: Freehold EPC Rating: B  
Council Tax Band: D

fixed price

**£380,000**



**Ground Floor**



**First Floor**



**Second Floor**

This floor plan is for illustrative purposes only. It is not drawn to scale. Any measurements, floor areas (including any total floor area), openings and orientation are approximate. No details are guaranteed, they cannot be relied upon for any purpose and they do not form part of any agreement. No liability is taken for any error, omission or misstatement. A party must rely upon its own inspection(s). Powered by [www.focalagent.com](http://www.focalagent.com)

**view this property online** [brownandmerry.co.uk/Property/STS107704](http://brownandmerry.co.uk/Property/STS107704)



Property Ref:  
STS107704 - 0005

1. MONEY LAUNDERING REGULATIONS Intending purchasers will be asked to produce identification documentation at a later stage and we would ask for your co-operation in order that there is no delay in agreeing the sale. 2. These particulars do not constitute part or all of an offer or contract. 3. The measurements indicated are supplied for guidance only and as such must be considered incorrect. Potential buyers are advised to recheck measurements before committing to any expense. 4. We have not tested any apparatus, equipment, fixtures or services and it is in the buyers interest to check the working condition of any appliances. 5. Where an EPC, or a Home Report (Scotland only) is held for this property, it is available for inspection at the branch by appointment. If you require a printed version of a Home Report, you will need to pay a reasonable production charge reflecting printing and other costs. 6. We are not able to offer an opinion either written or verbal on the content of these reports and this must be obtained from your legal representative. 7. Whilst we take care in preparing these reports, a buyer should ensure that his/her legal representative confirms as soon as possible all matters relating to title including the extent and boundaries of the property and other important matters before exchange of contracts.

Brown & Merry is a trading name of Sequence (UK) Limited which is registered in England and Wales under company number 4268443, Registered Office is Cumbria House, 16-20 Hockliffe Street, Leighton Buzzard, Bedfordshire, LU7 1GN. VAT Registration Number is 500 2481 05.

  
**brown & merry**



**01908 562011**



[stonystatford@brownandmerry.co.uk](mailto:stonystatford@brownandmerry.co.uk)



65 High Street, MILTON KEYNES,  
Buckinghamshire, MK11 1AY



**[brownandmerry.co.uk](http://brownandmerry.co.uk)**