



**Ronaldsay Grove, Whitehouse Milton Keynes MK8 1FN**

***welcome to***

## **Ronaldsay Grove, Whitehouse Milton Keynes**

Situated in Whitehouse area of Milton Keynes, is this charming TWO bedroom MID-TERRACE home with a spacious entrance hall that offers a warm and inviting atmosphere that leads to the OPEN PLAN kitchen, living, and dining area, perfect for modern living and entertaining.

### **Entrance Hall:**

Radiator.

### **Cloakroom:**

Suite comprising: WC wash hand basin and radiator.

### **Kitchen:**

26' Max x 13' 3" ( 7.92m Max x 4.04m )

Fitted with a range of units to both base and eye level. stainless steel sink with mixer taps, built in oven/hob with extractor fan over, built in fridge freezer, space for washing machine, two radiators, built in understairs storage and double glazed patio doors leading to rear garden.

### **Landing:**

Doors to all rooms:

### **Bedroom One:**

13' 2" x 10' ( 4.01m x 3.05m )

Radiator and double glazed window to front aspect.

### **Bedroom Two:**

11' 1" x 9' 4" ( 3.38m x 2.84m )

Radiator, storage cupboard and double glazed window to rear aspect.

### **Bathroom:**

White suite comprising: Bath with shower over, WC, wash hand basin, heated towel rail and extractor fan.

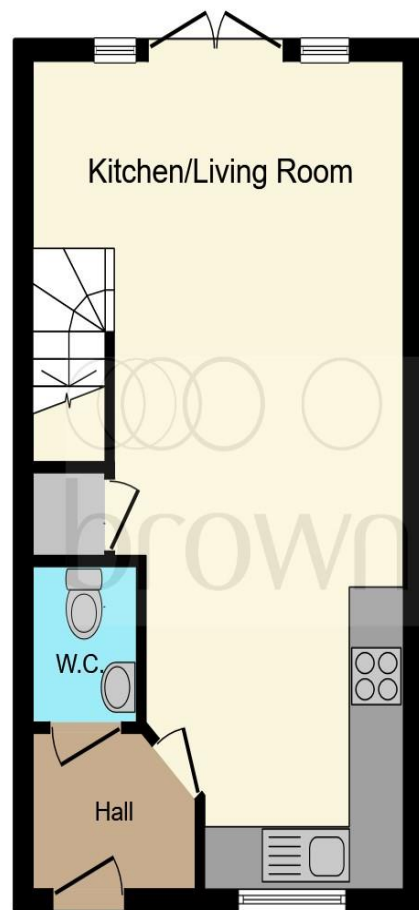
### **Outside:**

#### **Front:**

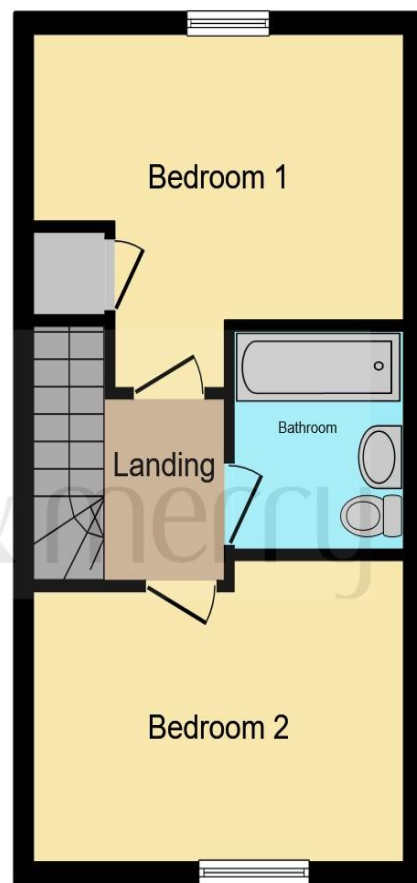
Two designated parking spaces.

#### **Rear:**

Mainly laid to lawn with blocked paved and shed with power.

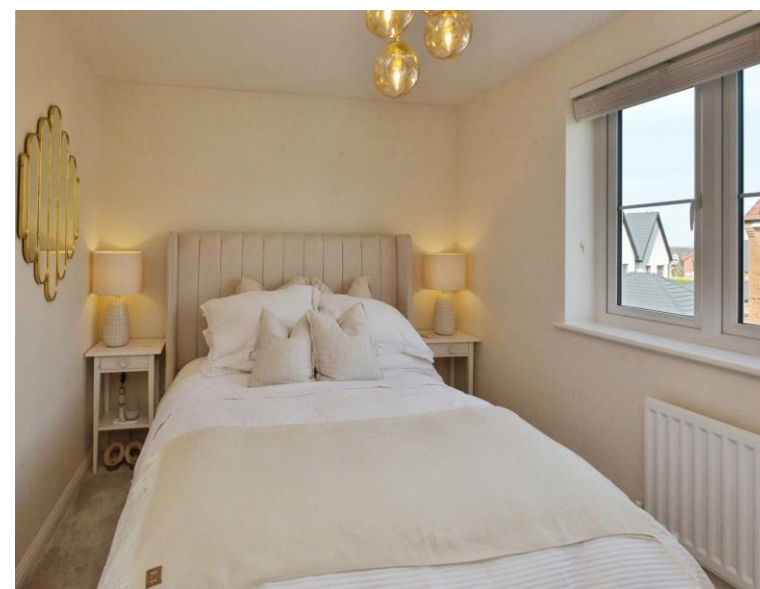


**Ground Floor**



**First Floor**

This floor plan is for illustrative purposes only. It is not drawn to scale. Any measurements, floor areas (including any total floor area), openings and orientation are approximate. No details are guaranteed, they cannot be relied upon for any purpose and they do not form part of any agreement. No liability is taken for any error, omission or misstatement. A party must rely upon its own inspection(s). Powered by [www.focalagent.com](http://www.focalagent.com)



**welcome to**  
**Ronaldsay Grove,**  
**Whitehouse Milton Keynes**

- SHOW HOME CONDITION
- TWO DOUBLE BEDROOMS
- ALLOCATED PARKING
- BUILT IN 2022
- PERFECT FIRST HOME

Tenure: Freehold EPC Rating: B

offers in excess of

**£330,000**



**view this property online** [brownandmerry.co.uk/Property/STS107722](https://www.brownandmerry.co.uk/Property/STS107722)



Property Ref:  
STS107722 - 0004

1. MONEY LAUNDERING REGULATIONS Intending purchasers will be asked to produce identification documentation at a later stage and we would ask for your co-operation in order that there is no delay in agreeing the sale. 2. These particulars do not constitute part or all of an offer or contract. 3. The measurements indicated are supplied for guidance only and as such must be considered incorrect. Potential buyers are advised to recheck measurements before committing to any expense. 4. We have not tested any apparatus, equipment, fixtures or services and it is in the buyers interest to check the working condition of any appliances. 5. Where an EPC, or a Home Report (Scotland only) is held for this property, it is available for inspection at the branch by appointment. If you require a printed version of a Home Report, you will need to pay a reasonable production charge reflecting printing and other costs. 6. We are not able to offer an opinion either written or verbal on the content of these reports and this must be obtained from your legal representative. 7. Whilst we take care in preparing these reports, a buyer should ensure that his/her legal representative confirms as soon as possible all matters relating to title including the extent and boundaries of the property and other important matters before exchange of contracts.

Brown & Merry is a trading name of Sequence (UK) Limited which is registered in England and Wales under company number 4268443, Registered Office is Cumbria House, 16-20 Hockliffe Street, Leighton Buzzard, Bedfordshire, LU7 1GN. VAT Registration Number is 500 2481 05.

  
**brown & merry**



**01908 562011**



[stonystatford@brownandmerry.co.uk](mailto:stonystatford@brownandmerry.co.uk)



65 High Street, MILTON KEYNES,  
Buckinghamshire, MK11 1AY



**[brownandmerry.co.uk](https://www.brownandmerry.co.uk)**