



**Glebe Road, Deanshanger, Milton Keynes, MK19 6LZ**

**welcome to**

## **Glebe Road, Deanshanger, Milton Keynes**

Situated in the sought-after village of Deanshanger, this well-presented four-bedroom semi-detached property on Glebe Road offers a fantastic opportunity for families and with excellent local amenities, schools, and transport links, this fantastic home is not to be missed!

### **Porch:**

### **Hallway:**

Stairs rising to first floor.

### **Living Room:**

13' 1" x 10' 2" ( 3.99m x 3.10m )

Double glazed window to front aspect and radiator.

### **Kitchen:**

15' 4" x 9' 9" ( 4.67m x 2.97m )

Fitted with a range of units to both base and eye level with drawers and worksurfaces over, single sink with mixer taps, fitted oven with gas hob and extractor over, seating area, French door leading to the rear garden, double glazed window and archway to utility room.

### **Utility Room:**

12' 6" x 6' 11" ( 3.81m x 2.11m )

Units to both base and eye level with worksurfaces over, breakfast bar, boiler, space for a washing machine and tumble dryer and double glazed window to rear aspect.

### **Dining/Family Room:**

Double glazed window to front aspect and radiator.





**Landing:**

Doors to all rooms:

**Bedroom One:**

11' 6" x 8' 11" ( 3.51m x 2.72m )

Double glazed window to rear aspect and radiator.

**Bedroom Two:**

11' 3" x 8' 11" ( 3.43m x 2.72m )

Double glazed window to front aspect and radiator.

**Bedroom Three:**

11' 10" x 6' 9" ( 3.61m x 2.06m )

Double glazed window to front aspect and radiator.

**Bedroom Four:**

8' 3" x 6' 3" ( 2.51m x 1.91m )

Double glazed window to front aspect and radiator.

**Bathroom:**

Suite comprising: Bath with shower and screen over, WC, vanity unit with wash hand basin, extractor fan, heated towel rail and double glazed window to rear aspect.

**Outside:****Front:**

Gravel driveway providing off road parking for two cars.

**Rear:**

Mainly laid to lawn with patio area for entertaining and shed to remain.



***view this property online*** [brownmerry.co.uk/Property/STS107871](https://www.brownmerry.co.uk/Property/STS107871)



welcome to

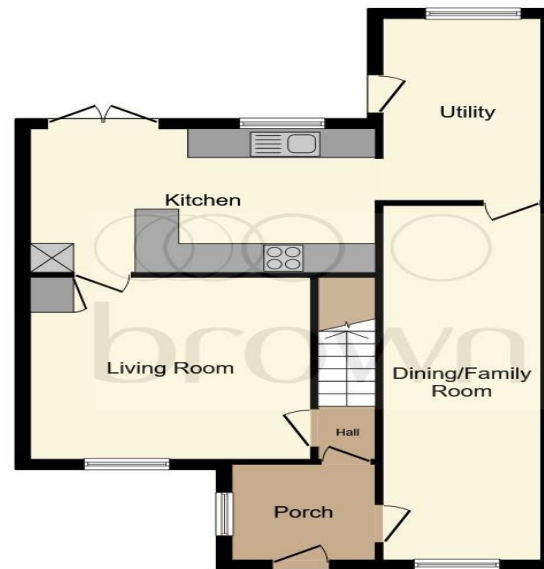
## Glebe Road, Deanshanger Milton Keynes

- TWO RECEPTIONS ROOMS
- FOUR/FIVE BEDROOMS
- DRIVEWAY
- UTILITY ROOM
- WELL PRESENTED

Tenure: Freehold EPC Rating: C

offers in excess of

**£375,000**



**Ground Floor**



**First Floor**

This floor plan is for illustrative purposes only. It is not drawn to scale. Any measurements, floor areas (including any total floor area), openings and orientation are approximate. No details are guaranteed, they cannot be relied upon for any purpose and they do not form part of any agreement. No liability is taken for any error, omission or misstatement. A party must rely upon its own inspection(s). Powered by [www.focalagent.com](http://www.focalagent.com)

**view this property online** [brownandmerry.co.uk/Property/STS107871](http://brownandmerry.co.uk/Property/STS107871)



Property Ref:  
STS107871 - 0005

1. MONEY LAUNDERING REGULATIONS Intending purchasers will be asked to produce identification documentation at a later stage and we would ask for your co-operation in order that there is no delay in agreeing the sale. 2. These particulars do not constitute part or all of an offer or contract. 3. The measurements indicated are supplied for guidance only and as such must be considered incorrect. Potential buyers are advised to recheck measurements before committing to any expense. 4. We have not tested any apparatus, equipment, fixtures or services and it is in the buyers interest to check the working condition of any appliances. 5. Where an EPC, or a Home Report (Scotland only) is held for this property, it is available for inspection at the branch by appointment. If you require a printed version of a Home Report, you will need to pay a reasonable production charge reflecting printing and other costs. 6. We are not able to offer an opinion either written or verbal on the content of these reports and this must be obtained from your legal representative. 7. Whilst we take care in preparing these reports, a buyer should ensure that his/her legal representative confirms as soon as possible all matters relating to title including the extent and boundaries of the property and other important matters before exchange of contracts.

Brown & Merry is a trading name of Sequence (UK) Limited which is registered in England and Wales under company number 4268443, Registered Office is Cumbria House, 16-20 Hockliffe Street, Leighton Buzzard, Bedfordshire, LU7 1GN. VAT Registration Number is 500 2481 05.

 **brown & merry**



**01908 562011**



[stonystatford@brownandmerry.co.uk](mailto:stonystatford@brownandmerry.co.uk)



65 High Street, MILTON KEYNES,  
Buckinghamshire, MK11 1AY



**[brownandmerry.co.uk](http://brownandmerry.co.uk)**