



**Stotfold Court, Stony Stratford, Milton Keynes, MK11 1NY**

**welcome to**

## **Stotfold Court, Stony Stratford, Milton Keynes**

Situated in the STONY STRATFORD is this delightful THREE semi-detached property features a contemporary kitchen, diner, living room, bright conservatory at the rear. Additional benefits include a convenient downstairs cloakroom, off road parking ideal for families or professionals.

### **Entrance Hall:**

Enter via front door, stairs rising to first floor with understairs cupboard and radiator.

### **Cloakroom:**

WC, wash hand basin and double glazed window to front aspect.

### **Living Room:**

11' 9" x 14' 3" ( 3.58m x 4.34m )

Double glazed bay window, wood flooring and radiator.

### **Dining Room:**

11' 9" x 9' 1" ( 3.58m x 2.77m )

French doors opening to conservatory and radiator.

### **Kitchen:**

Fitted with a range of units to both base and eye level and worktops over, single stainless steel sink and drainer with mixer taps over, built in oven with six ring gas hob over, space for washing machine, space for fridge and double glazed window to rear aspect.

### **Conservatory:**

17' 1" x 8' 2" ( 5.21m x 2.49m )

Of brick and UPVC construction with double glazed doors to side aspect.





**Landing:**

Doors to all rooms.

**Bedroom One:**

Double glazed window to rear aspect, built in wardrobe on both sides and radiator.

**Bedroom Two:**

Double glazed window to front aspect and radiator.

**Bedroom Three:**

Double glazed window to rear aspect and radiator.

**Family Bathroom:**

Suite comprising: Bath with taps and electric shower over, WC, wash hand basin and double glazed window to front aspect.



**Outside:**

**Front:**

Enclosed privet low hedge with pathway leading to front door and driveway providing off road parking.

**Rear:**

Fully enclosed and mainly laid to lawn with mature trees and shrub borders and shed.



**view this property online** [brownandmerry.co.uk/Property/STS107560](http://brownandmerry.co.uk/Property/STS107560)



welcome to

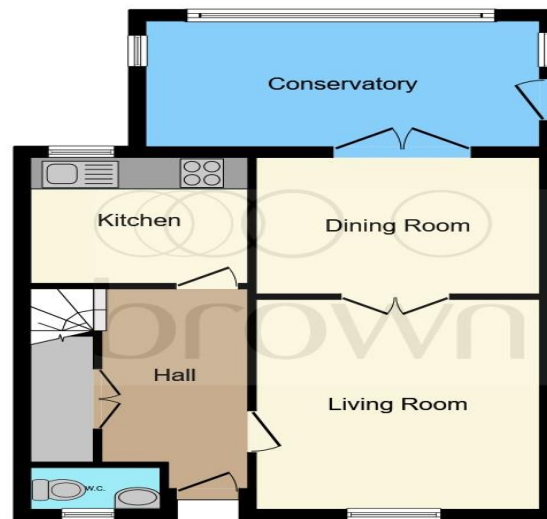
## Stotfold Court, Stony Stratford, Milton Keynes

- THREE BEDROOM SEMI-DETACHED
- DOUBLE BEDROOMS
- CLOAKROOM
- GREAT FAMILY HOME
- DRIVEWAY PROVIDING OFF ROAD PARKING

Tenure: Freehold EPC Rating: D

offers over

**£315,000**



**Ground Floor**



**First Floor**

This floor plan is for illustrative purposes only. It is not drawn to scale. Any measurements, floor areas (including any total floor area), openings and orientation are approximate. No details are guaranteed, they cannot be relied upon for any purpose and they do not form part of any agreement. No liability is taken for any error, omission or misstatement. A party must rely upon its own inspection(s). Powered by [www.focalagent.com](http://www.focalagent.com)

**view this property online** [brownandmerry.co.uk/Property/STS107560](http://brownandmerry.co.uk/Property/STS107560)



Property Ref:  
STS107560 - 0004

1. MONEY LAUNDERING REGULATIONS Intending purchasers will be asked to produce identification documentation at a later stage and we would ask for your co-operation in order that there is no delay in agreeing the sale. 2. These particulars do not constitute part or all of an offer or contract. 3. The measurements indicated are supplied for guidance only and as such must be considered incorrect. Potential buyers are advised to recheck measurements before committing to any expense. 4. We have not tested any apparatus, equipment, fixtures or services and it is in the buyers interest to check the working condition of any appliances. 5. Where an EPC, or a Home Report (Scotland only) is held for this property, it is available for inspection at the branch by appointment. If you require a printed version of a Home Report, you will need to pay a reasonable production charge reflecting printing and other costs. 6. We are not able to offer an opinion either written or verbal on the content of these reports and this must be obtained from your legal representative. 7. Whilst we take care in preparing these reports, a buyer should ensure that his/her legal representative confirms as soon as possible all matters relating to title including the extent and boundaries of the property and other important matters before exchange of contracts.

Brown & Merry is a trading name of Sequence (UK) Limited which is registered in England and Wales under company number 4268443, Registered Office is Cumbria House, 16-20 Hockliffe Street, Leighton Buzzard, Bedfordshire, LU7 1GN. VAT Registration Number is 500 2481 05.

  
brown & merry



**01908 562011**



[stonystratford@brownandmerry.co.uk](mailto:stonystratford@brownandmerry.co.uk)



65 High Street, MILTON KEYNES,  
Buckinghamshire, MK11 1AY



**[brownandmerry.co.uk](http://brownandmerry.co.uk)**