



Lagonda Close, Newport Pagnell, MK16 9BN

welcome to

Lagonda Close, Newport Pagnell

Situated on the sought-after Lagonda Close in the popular market town of Newport Pagnell, this well-presented, three-bedroom, semi-detached home offers comfortable family living in a quiet residential cul-de-sac.

Entrance Hall

Double-glazed door to the front and stairs to the first floor. Doors to the lounge and the office/family room.

Office / Family Room

Double-glazed window to the front, radiator and double-glazed window to the rear. Double-glazed door to the rear.

Lounge

Radiator, cupboard and double-glazed window to the front. Door to the kitchen/dining room.

Kitchen / Dining Room

Fitted with a mix of wall and base units with work surface over, sink with mixer tap and drainer, electric oven and a gas hob with a chimney style extractor fan over. Space for a dishwasher, washing machine and a fridge/freezer. Built-in pantry, radiator and space for a dining table and chairs. 2 double-glazed windows to the rear and double-glazed door to the garden.

First Floor

Landing

Stairs from the ground floor and airing cupboard. Doors to all bedrooms and the family bathroom.

Bedroom One

Built-in wardrobes with hanging space and storage, radiator and double-glazed window to the rear.

Bedroom Two

Radiator and double-glazed window to the front.

Bedroom Three

Built-in cupboard, radiator and double-glazed window to the front.

Bathroom

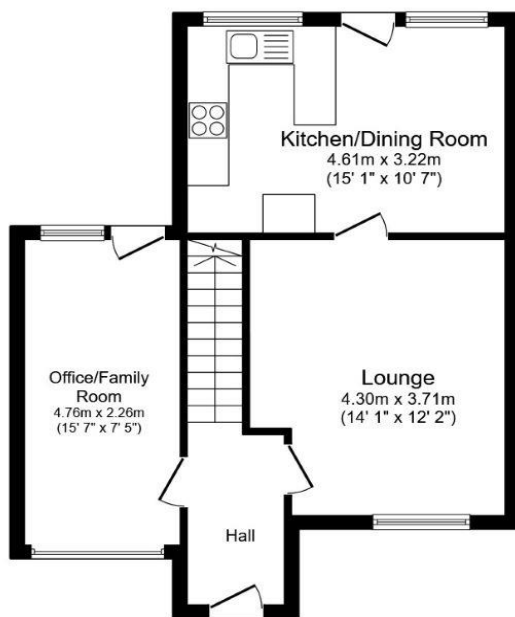
Fully tiled with a wash hand basin sitting on a vanity unit, low-level WC with an integrated flush and a 'P' shaped bath with shower over. Heated towel rail and double-glazed obscured window to the rear.

Outside Front Garden

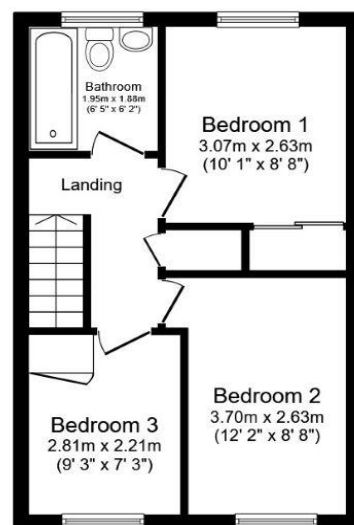
Block paved frontage providing off-road parking for up to 3 cars, EV charger ready and steps up to the front door.

Rear Garden

Enclosed by panel fencing with gated side access the garden is laid to lawn with a paved patio area and shed.



Ground Floor



First Floor

Total floor area 83.4 m² (897 sq.ft.) approx

This floor plan is for illustrative purposes only. It is not drawn to scale. Any measurements, floor areas (including any total floor area), openings and orientation are approximate. No details are guaranteed, they cannot be relied upon for any purpose and they do not form part of any agreement. No liability is taken for any error, omission or misstatement. A party must rely upon its own inspection(s). Powered by www.propertybox.io



welcome to
Lagonda Close,
Newport Pagnell

- THREE-BEDROOM SEMI-DETACHED
- CUL-DE-SAC LOCATION
- SPACIOUS LIVING ROOM
- KITCHEN/DINING ROOM
- WELL-PROPORTIONED BEDROOMS

Tenure: Freehold EPC Rating: C
Council Tax Band: C

fixed price
£400,000



view this property online [brownandmerry.co.uk/Property/NPL108002](https://www.brownandmerry.co.uk/Property/NPL108002)



Property Ref:
NPL108002 - 0007

1. MONEY LAUNDERING REGULATIONS Intending purchasers will be asked to produce identification documentation at a later stage and we would ask for your co-operation in order that there is no delay in agreeing the sale. 2. These particulars do not constitute part or all of an offer or contract. 3. The measurements indicated are supplied for guidance only and as such must be considered incorrect. Potential buyers are advised to recheck measurements before committing to any expense. 4. We have not tested any apparatus, equipment, fixtures or services and it is in the buyers interest to check the working condition of any appliances. 5. Where an EPC, or a Home Report (Scotland only) is held for this property, it is available for inspection at the branch by appointment. If you require a printed version of a Home Report, you will need to pay a reasonable production charge reflecting printing and other costs. 6. We are not able to offer an opinion either written or verbal on the content of these reports and this must be obtained from your legal representative. 7. Whilst we take care in preparing these reports, a buyer should ensure that his/her legal representative confirms as soon as possible all matters relating to title including the extent and boundaries of the property and other important matters before exchange of contracts.

Brown & Merry is a trading name of Sequence (UK) Limited which is registered in England and Wales under company number 4268443, Registered Office is Cumbria House, 16-20 Hockliffe Street, Leighton Buzzard, Bedfordshire, LU7 1GN. VAT Registration Number is 500 2481 05.

Under the terms of the Estate Agency Act 1979 (Section 21), please note that the vendor is an Employee of the Connells


brown & merry



01908 611242



newportpagnell@brownandmerry.co.uk



74A High Street, Newport Pagnell, MILTON
KEYNES, Buckinghamshire, MK16 8AQ



[brownandmerry.co.uk](https://www.brownandmerry.co.uk)